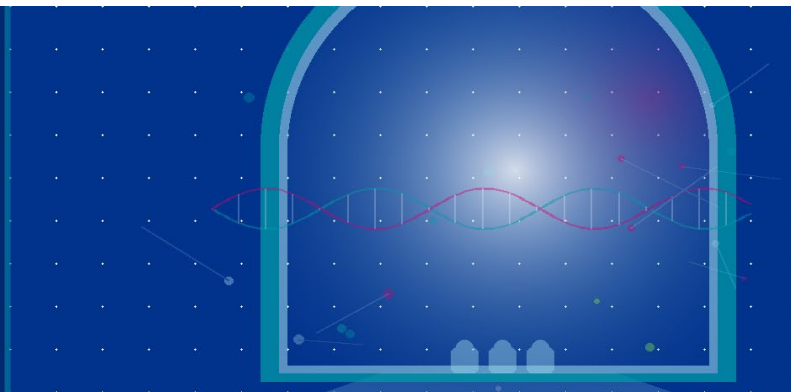


# 10th Anniversary Vivian W. Pinn Symposium

From Gaps to Gateways:  
Advancing Research on Chronic  
Conditions in Women

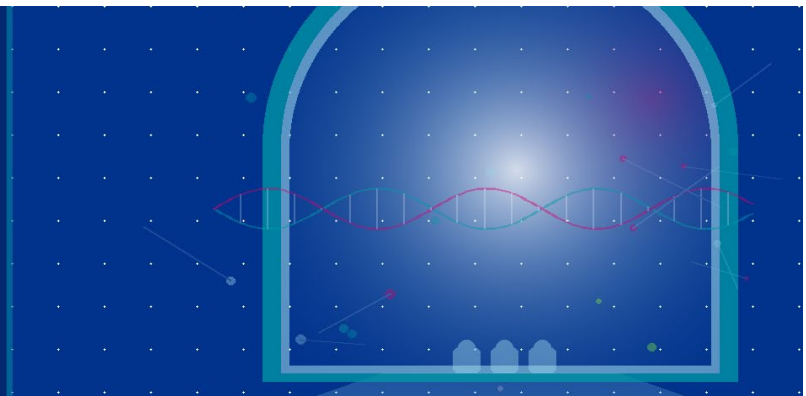


Time	Session
8:00 a.m.	Registration
8:45 a.m.	<b>Welcome Remarks</b>  <b>Janine Austin Clayton, MD, FARVO</b> Associate Director for Research on Women's Health, National Institutes of Health (NIH) Director, Office of Research on Women's Health (ORWH), NIH
9:00 a.m.	<b>Opening Remarks</b>  <b>Jayanta "Jay" Bhattacharya, MD, PhD</b> Director, NIH Acting Director, Centers for Disease Control and Prevention
9:05 a.m.	<b>Keynote Address</b>  Nicole Kleinstreuer, PhD Deputy Director for Program Coordination, Planning, and Strategic Initiatives (DPCPSI), NIH Director, DPCPSI, NIH <i>Talk Title: Beyond the Knowledge Gap: Human-Based Innovation for Women's Chronic Conditions</i>
9:30 a.m.	<b>Panel 1: Basic &amp; Translational Research</b>  <b>Juliane Caviston, PhD</b> (Panel Chair) Health Science Policy Analyst, ORWH, NIH  <b>Montserrat C. Anguera, PhD</b> Associate Professor, Department of Biomedical Sciences, University of Pennsylvania School of Veterinary Medicine <i>Talk Title: Why Are Female Patients More Likely to Develop Autoimmune Disease?            X-Chromosome Inactivation &amp; Immune Cell Function</i>  <b>Eric Belin de Chantemèle, DSc</b> Leon H. Charbonnier Endowed Chair and Professor, Medical College of Georgia at Augusta University <i>Talk Title: Women Under Pressure: The Vascular Toll of Obesity</i>  <b>Rachelle Crescenzi, PhD</b> Associate Professor of Radiology and Medical Imaging, University of Virginia School of Medicine <i>Talk Title: Translational Imaging of SALT in Lymphedema and Lipedema</i>
10:30 a.m.	Break

10th Anniversary

# Vivian W. Pinn Symposium

From Gaps to Gateways:  
Advancing Research on Chronic  
Conditions in Women



## 10:45 a.m. Panel 2: Clinical Research

**Annina Burns, PhD, RD** (Panel Chair)  
Health Science Policy Analyst, ORWH, NIH

**Rebecca Arend, MD, PhD\***  
Associate Professor of Gynecology Oncology, University of Alabama at Birmingham  
*Talk Title: Vaginal Specimens for Cancer Diagnosis*

**Jonna L. Morris PhD, RN**  
Assistant Professor, University of Pittsburgh School of Nursing  
*Talk Title: Rethinking Sleep Apnea in Women: How Disease Heterogeneity Shapes Diagnosis and Treatment*

**Karen Schliep, PhD, MSPH**, Associate Professor, Division of Public Health, Department of Family and Preventive Medicine, University of Utah  
*Talk Title: Endometriosis*

## 11:45 a.m. Lunch and Poster Viewing Session

**Thushani Nilaweera, PhD (Poster Chair)**  
Postdoctoral Fellow, National Institute of Diabetes and Digestive and Kidney Diseases (NIDDK), NIH

## 12:30 p.m. Panel 3: Social and Behavioral Sciences Research

**Shari Feirman, PhD** (Panel Chair)  
Health Science Policy Analyst, ORWH, NIH

**Holly J. Jones PhD, RN, MSN., APRN-CNP, FAHA**  
Associate Professor, The Ohio State University College of Nursing  
*Talk Title: Cardiovascular Disease in Women: What Makes It Different and Why It Matters*

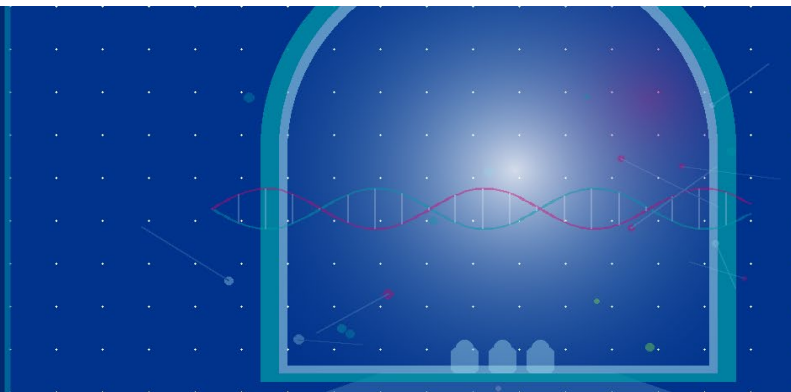
**Mehret Birru Talabi, MD, PhD**  
Associate Professor of Medicine, Assistant Dean and Co-Director of Pitt/CMU Medical Science Training Program (MD-PhD), Director, UPMC Women's and Reproductive Health Rheumatology Clinic  
*Talk Title: The Reproductive Healthcare Gap in Rheumatology: Centering Patient and Provider Needs to Transform Care*

**Kamila Alexander, PhD, RN, MSN/MPH**  
Associate Professor, Natalie and Wes Bush Rising Professor; Director, PhD, DNP/PhD & Postdoctoral Programs, Johns Hopkins University  
*Talk Title: Living Healthy, Staying Safe: Intimate Partner Violence, Health Care, and Safety Strategies among Black Women with HIV*

10th Anniversary

# Vivian W. Pinn Symposium

From Gaps to Gateways:  
Advancing Research on Chronic  
Conditions in Women



1:30 p.m.

## Panel 4: Implementation Science

**Balkissa Ouattara, MD, PhD, MPH** (Panel Chair)  
Medical Officer, ORWH, NIH

**David Chambers, DPhil**

Deputy Director for Implementation Science, Division of Cancer Control and Population Sciences,  
National Cancer Institute (NCI), NIH

*Talk Title: A Brief Introduction to Implementation Science*

**María E. Fernández, PhD\***

Vice President of Population Health and Implementation Science,  
Co-Director, UTHealth Houston Institute for Implementation Science, UTHealth Houston

*Talk Title: Planning Strategies to Improve Implementation for Chronic Disease Prevention and Control*

**Danielle Parrish, PhD\***

Steve Hicks Professor in Addictions and Substance Abuse Services; Associate Director of the Health  
Behavior Research and Training Institute (HBRT), University of Texas at Austin

*Talk Title: Women and Alcohol: The Integration of Human-Centered Design and Implementation Science to  
Prevent Chronic Health Conditions*

2:30 p.m.

## Break

2:45 p.m.

## Panel 5: Multisector Partnerships and Innovation

**Tania Nayak Kamphaus, MSc PhD** (Panel Chair)

Associate Vice President, Science Partnerships; Director, Patient Engagement, Foundation for the National  
Institutes of Health (FNIH)

**Vicki Shanmugam, MBBS, MRCP, FACR, CCD**

Director, Office of Autoimmune Disease Research (OADR), ORWH, NIH

*Talk Title: Partnerships for Autoimmune Disease Research*

**Aaron Pawlyk, PhD**

Chief, Obstetric and Pediatric Pharmacology and Therapeutics Branch

Eunice Kennedy Shriver National Institute of Child Health and Human Development (NICHD), NIH

*Talk Title: NICHD Maternal Health Partnerships and Innovation*

**Mary L. Bousxein, PhD**

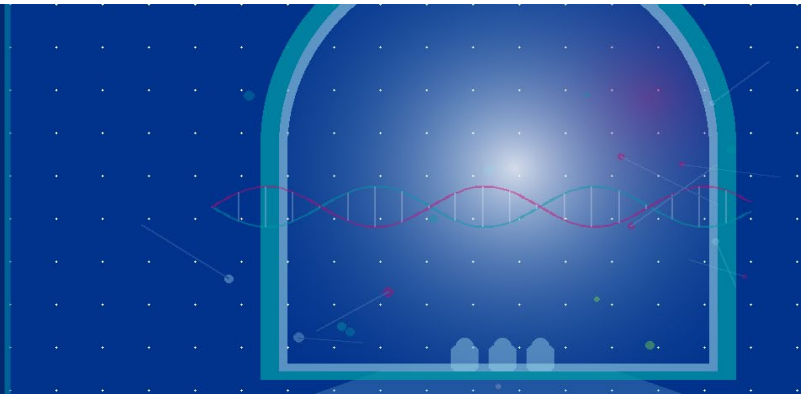
Maurice E. Mueller Professor of Orthopedic Surgery, Beth Israel Deaconess Medical Center,  
Harvard Medical School

*Talk Title: FNIH-ASBMR Study to Advance BMD as a Regulatory Endpoint (SABRE) Project*

10th Anniversary

# Vivian W. Pinn Symposium

From Gaps to Gateways:  
Advancing Research on Chronic  
Conditions in Women



## Panel 5: Multisector Partnerships and Innovation, Continued

### **Meghan Pennini, PhD**

Director, Translational Science, Inflammation and Immunity, FNIH

*Talk Title: Foundation for the National Institutes of Health (FNIH): Public-Private-Patient Partnerships to Accelerate Biomedical Breakthroughs*

3:45 p.m.

Break

4:00 p.m.

Panel 6: Federal Partnerships

### **Cindy Caughman, MPH** (Panel Chair)

Acting Deputy Director, (ORW), NIH

### **Janine Austin Clayton, MD, FARVO**

Associate Director for Research on Women's Health, NIH

Director, ORWH, NIH

### **Dorothy Fink, MD**

Principal Deputy Assistant Secretary, Office of the Assistant Secretary for Health

Director, Office on Women's Health in the Office of the Assistant Secretary for Health

### **Sally Haskell, MD, MS**

Deputy Chief Officer, Office of Women's Health, US Department of Veterans Affairs

### **Eliza Heppner, MPA**

Associate Administrator (Acting), Maternal & Child Health Bureau

Health Resources and Services Administration (HRSA)

### **Kristen Honey, PhD, PMP**

Chief Data Officer, Office of the National Coordinator for Health Information Technology

US Department of Health and Human Services

### **CAPT Djenaba A. Joseph, MD, MPH\***

Acting Director, National Center for Chronic Disease Prevention and Health Promotion

Centers for Disease Control and Prevention

### **CDR Tina Pattara-Lau, MD, FACOG\***

Maternal and Child Health Consultant, Office of Clinical and Preventive Services

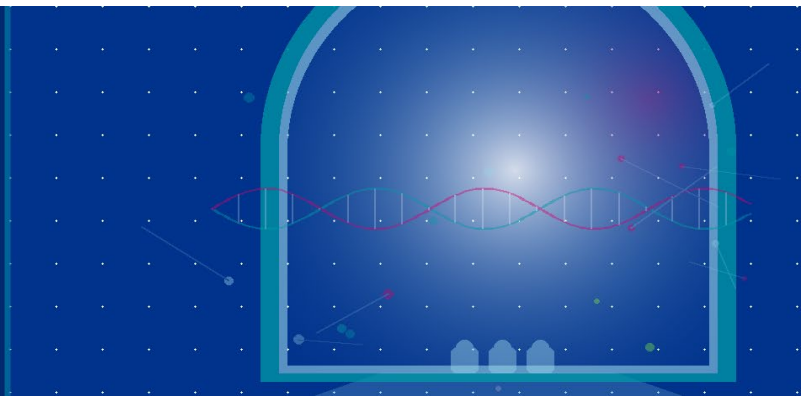
Indian Health Services

## Panel 6: Federal Partnerships, Continued

\* Presenting virtually

10th Anniversary  
**Vivian W. Pinn  
Symposium**

From Gaps to Gateways:  
Advancing Research on Chronic  
Conditions in Women



**Kaveeta Vasisht, MD, PharmD**

Associate Commissioner for Women's Health  
Food and Drug Administration

**Berlina Wallace-Berube**

Senior Public Health Advisor, Center for Substance Abuse Treatment,  
Substance Abuse and Mental Health Services Administration (SAMHSA)

**Elizabeth M. Yano, PhD, MSPH**

Director, National Women's Health Research Network  
US Department of Veterans Affairs

---

**4:45 p.m.**

**Honoring Dr. Pinn**

**Devon Valera**

Collections Manager and Curator, Office of NIH History and Stetten Museum (ONHM), NIH

**Loren Miller, PhD**

Senior Curator, ONHM, NIH

*Talk Title: Office of Research on Women's Health (ORWH): 35th Anniversary Digital Exhibit*

---

**5:00 p.m.**

**Closing Remarks**

**Vivian W. Pinn, MD**

Special Volunteer, NIDDK; Former Senior Scientist Emerita, Fogarty International Center;  
Founding Director (Retired), ORWH

---