

Fiscal Years
2026
—through—
2030

NIH-WIDE STRATEGIC PLAN FOR AUTOIMMUNE DISEASE RESEARCH

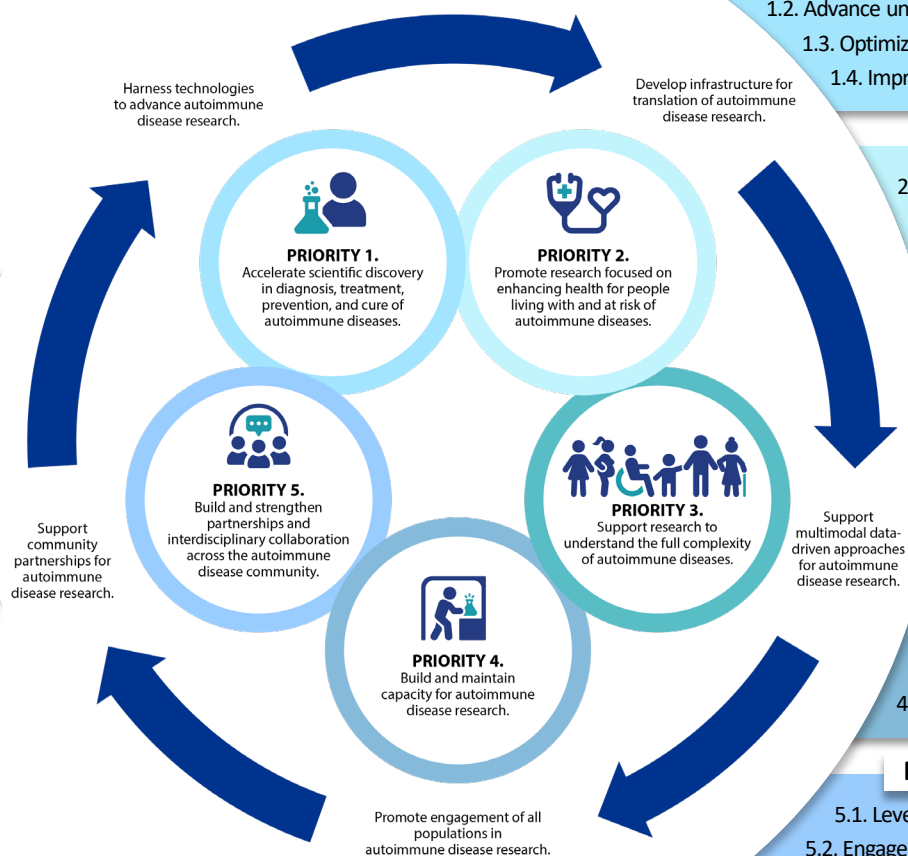


The mission of the *NIH-Wide Strategic Plan for Autoimmune Disease Research* is to coordinate and advance efforts to support rigorous, high-priority, innovative, and collaborative autoimmune disease research.



NIH National Institutes of Health

Strategic Priorities & Objectives



PRIORITY 1

- 1.1. Support research into fundamental mechanisms of autoimmunity and autoimmune disease
- 1.2. Advance understanding of drivers of autoimmune disease signs, symptoms, and flares
- 1.3. Optimize development of research models for studying autoimmune disease
- 1.4. Improve understanding of predictors and risk factors for autoimmunity across the lifespan

PRIORITY 2

- 2.1. Support research investigating preclinical autoimmunity
- 2.2. Advance research to accelerate accurate diagnosis of autoimmune disease
- 2.3. Bolster research focused on improving treatment for autoimmune disease
- 2.4. Support implementation science for autoimmune disease research across all populations

PRIORITY 3

- 3.1. Support the study of human cohorts for autoimmune disease research
- 3.2. Promote research to understand how different populations are affected by autoimmune diseases
- 3.3. Advance research that will facilitate clinical trials for autoimmune diseases
- 3.4. Expand autoimmune disease research focused on co-occurring and comorbid conditions

PRIORITY 4

- 4.1. Prioritize and support development of infrastructure for autoimmune disease research
- 4.2. Integrate clinical trial networks and registries in autoimmune disease research
- 4.3. Develop data science and computational tools to accelerate autoimmune disease research
- 4.4. Support efforts to develop and sustain the scientific workforce

PRIORITY 5

- 5.1. Leverage public-private partnerships to support autoimmune disease research
- 5.2. Engage people living with autoimmune diseases, patient advocacy groups, and caregivers in research
- 5.3. Partner with people and communities disproportionately affected by autoimmune disease outcomes
- 5.4. Coordinate and foster collaborative research

Read the detailed plan online:
<https://orwh.od.nih.gov/OADR-ORWH/Strategic-Planning-for-ADR>

