



## ACTIVITY DESCRIPTION

*Bench to Bedside: Integrating Sex and Gender to Improve Human Health* was developed by the National Institutes of Health (NIH) Office of Research on Women's Health (ORWH) in partnership with the Food and Drug Administration (FDA) Office of Women's Health (OWH). This online course gives users a thorough and up-to-date understanding of sex and gender influences on health and disease so users can apply this knowledge when conducting research and interpreting evidence for clinical practice. Course material showcases examples from basic science through clinical trials and translation into practice to ensure participants understand the importance of considering the influence of sex and gender throughout the research spectrum and beyond.

## INTENDED AUDIENCE

The course is designed for NIH staff, FDA staff, researchers and clinicians supported by the NIH; students and faculty in medical, nursing, pharmacy, and other health-related professional schools and programs; researchers and clinicians in the pharmaceutical industry and allied health professionals.

## LEARNING OBJECTIVES

After participating in this activity, the learner will demonstrate the ability to:

- Identify sex and gender differences in the presentation, risk factors, and pathophysiology of disease.
- Describe how sex and gender differences in risk factors and pathophysiology affect patient outcomes and disease management.
- Identify opportunities to address gaps in knowledge via future research efforts.
- Describe how insights from sex and gender research in one disease area can inform research design in other fields of study.

## ACCREDITATION STATEMENT

This activity has been planned and implemented in accordance with the accreditation requirements and policies of the Accreditation Council for Continuing Medical Education (ACCME) through the joint providership of Johns Hopkins University School of Medicine and National Institutes of Health. The Johns Hopkins University School of Medicine is accredited by the ACCME to provide continuing medical education for physicians.



## CREDIT DESIGNATION STATEMENT

The Johns Hopkins University School of Medicine designates this enduring material for a maximum of *6 AMA PRA Category 1 Credits™*. Physicians should claim only the credit commensurate with the extent of their participation in the activity. The following credentialing bodies accept *AMA PRA Category 1 Credit™* from organizations accredited by the ACCME:

- American Nurses Credentialing Center (ANCC)
- American Academy of Nurse Practitioners National Certification Program and the National Commission on Certification of Physician Assistants (NCCPA)

Additionally, the Maryland State Board of Social Work Examiners and Maryland State Board of Examiners of Psychologists have reciprocity agreements with Johns Hopkins University School of Medicine.



## METHOD OF PARTICIPATION

To participate in this internet enduring activity and receive a credit transcript or certificate of attendance (non-physicians), you must:

### METHOD OF PARTICIPATION

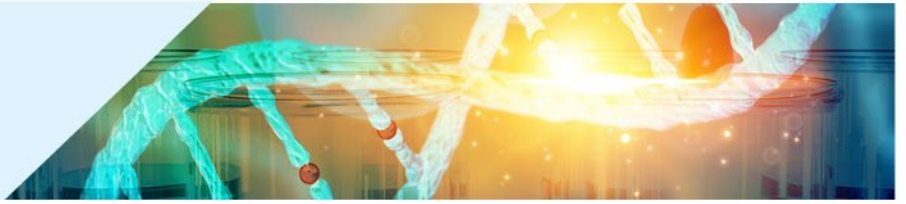
To participate in this internet enduring activity and receive a credit transcript or certificate of attendance (non-physicians), you must:

1. Register.
2. Login with the e-mail address and password you used to register.
3. Complete the Bench to Bedside course Pre-Knowledge Check Survey.
4. Select a module from those available and complete each lesson in the selected module.
5. Complete the module's Knowledge Check with at least 70 percent accuracy. Once you successfully complete a knowledge check, a green checkmark will appear. You will have three chances to successfully complete the knowledge check. If, on your third attempt, you are unsuccessful, you will have to return another time to try again.
6. Upon receiving a passing score on the Module's Knowledge Check, complete the Post-Knowledge Check\*. Note that the Post-Knowledge Check will only need to be completed once for the Bench to Bedside course.
7. Following the completion of the Post-Knowledge Check, complete the Module Evaluation Form.
8. Four weeks after the completion of the Post-Knowledge Check, you will receive an email to the email address in which you registered, providing instruction for completing the Outcomes Assessment. Note that after the four week period, the "Outcomes Assessment" survey will also be accessible from the ORWH Course Dashboard.
9. After you have completed steps one through eight, the Johns Hopkins University School of Medicine will be notified that you have completed the module.
10. Within 45 days of completing the module, you will receive an e-mail from the Johns Hopkins University School of Medicine OCME with instructions on how to retrieve your transcript electronically. Please note that these instructions will be sent to the e-mail address you provided when you registered.
11. If additional CMEs are desired, repeat steps one through ten for each additional module. A total of 6 CME credits are available.

## HARDWARE/SOFTWARE REQUIREMENTS

### What browser should I use?

This site will function with any browser.



## DATE OF RELEASE AND EXPIRATION AND ESTIMATED TIME TO COMPLETE ACTIVITY

Release Date: 1/1/2022

Expiration Date: 1/1/2023

Estimated Time to Complete This Educational Activity: 1.0 hours per credit

## PREREQUISITES

There are not prerequisites to participate in this activity.

## MODULES

1. Immunology
2. Cardiovascular Disease
3. Pulmonary Disease
4. Neurology
5. Endocrinology
6. Mental Health

*The Johns Hopkins University School of Medicine takes responsibility for the content, quality, and scientific integrity of this CME activity.*

## ACTIVITY DIRECTOR

**Elizabeth Barr, Ph.D.**

Social and Behavioral Scientist Administrator, Office of Research on Women's Health, NIH

## PLANNING COMMITTEE MEMBERS

**Gretchen Buckler, M.D., M.P.H.**

HHS Administration for Children and Families

**Caroline Huang, Ph.D.**

FDA, Office of Women's Health

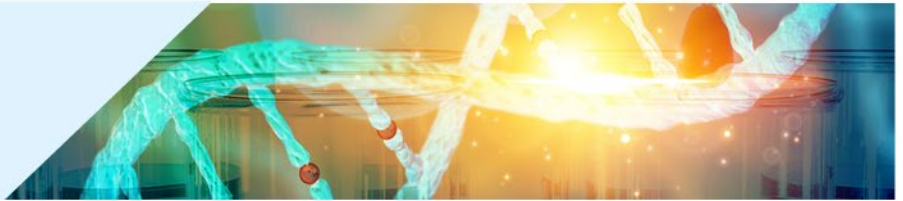
**Erin South, Pharm.D.**

Senior Pharmacist

FDA, Office of Women's Health

**Sarah Temkin, M.D. (Peer Reviewer)**

Associate Director for Clinical Research, NIH Office of Research on Women's Health, Office of Research on Women's Health, NIH



## **POLICY ON FACULTY AND PROVIDER DISCLOSURE**

It is the policy of the Johns Hopkins University School of Medicine and the National Institutes of Health that the speaker and provider disclose real or apparent conflicts of interest relating to the topics of this educational activity, and also disclose discussions of unlabeled/unapproved uses of drugs or devices during their presentation(s). The Johns Hopkins University School of Medicine OCME has established policies in place that will identify and resolve all conflicts of interest prior to this educational activity. Detailed disclosure will be made in the activity.

## **FULL DISCLOSURE POLICY AFFECTING CME ACTIVITIES**

As a provider approved by the Accreditation Council for Continuing Medical Education (ACCME), it is the policy of the Johns Hopkins University School of Medicine Office of Continuing Medical Education (OCME) to require signed disclosure of the existence of financial relationships with industry from any individual in a position to control the content of a CME activity sponsored by OCME. Members of the Planning Committee are required to disclose all relationships regardless of their relevance to the content of the activity. Authors are required to disclose only those relationships that are relevant to their specific presentation. The following relationships have been reported for this activity:

**No one in a position to control the content of this educational activity has disclosed a relevant financial interest or relationship with any commercial interest.**

## **OFF-LABEL PRODUCT DISCUSSION**

**No author has indicated that they will reference unlabeled/unapproved uses of drugs or products.**

## **DISCLAIMER STATEMENT**

The opinions and recommendations expressed by faculty and other experts whose input is included in this program are their own. This enduring material is produced for educational purposes only. Use of Johns Hopkins University School of Medicine name implies review of educational format design and approach. Please review the complete prescribing information of specific drugs or combination of drugs, including indications, contraindications, warnings and adverse effects before administering pharmacologic therapy to patients.

## **INTERNET CME POLICY**

The Office of Continuing Medical Education (CME) at the Johns Hopkins University School of Medicine is committed to protecting the privacy of its members and customers. Johns Hopkins University SOM CME maintains its Internet site as an information resource and service for physicians, other health professionals and the public. Continuing Medical Education at the Johns Hopkins University School of Medicine will keep your personal and credit information confidential when you participate in a CME Internet based program. Your information will never be given to anyone outside of the Johns Hopkins University School of Medicine's CME program. CME collects only the information necessary to provide you with the services that you request.

## **COPYRIGHT**

All rights reserved — The Johns Hopkins University School of Medicine.



## HIPAA STATEMENT

### CONFIDENTIALITY DISCLAIMER FOR CME CONFERENCE ATTENDEES

I certify that I am attending a Johns Hopkins University School of Medicine CME activity for accredited training and/or educational purposes.

I understand that while I am attending in this capacity, I may be exposed to "protected health information," as that term is defined and used in Hopkins policies and in the federal HIPAA privacy regulations (the "Privacy Regulations"). Protected health information is information about a person's health or treatment that identifies the person.

I pledge and agree to use and disclose any of this protected health information only for the training and/or educational purposes of my visit and to keep the information confidential. I agree not to post or discuss this protected health information, including pictures and/or videos, on any social media site (e.g. Facebook, Twitter, etc.), in any electronic messaging program or through any portable electronic device.

I understand that I may direct to the Johns Hopkins Privacy Officer any questions I have about my obligations under this Confidentiality Pledge or under any of the Hopkins policies and procedures and applicable laws and regulations related to confidentiality. The contact information is: Johns Hopkins Privacy Officer, telephone: 410-614-9900, e-mail: [HIPAA@jhmi.edu](mailto:HIPAA@jhmi.edu).

**"The Office of Continuing Medical Education at the Johns Hopkins University School of Medicine, as provider of this activity, has relayed information with the CME attendees/participants and certifies that the visitor is attending for training, education and/or observation purposes only."**

***For CME Questions, please contact the CME Office  
(410) 955-2959 or e-mail [cmenet@jhmi.edu](mailto:cmenet@jhmi.edu).***

***For CME Certificates, please call (410) 502-9634.***

Johns Hopkins University School of Medicine  
Office of Continuing Medical Education  
Turner 20/720 Rutland Avenue  
Baltimore, Maryland 21205-2195

Reviewed & Approved by:  
General Counsel, Johns Hopkins Medicine (4/1/03)  
(Updated 4/09 and 3/14)

## URL

<https://orwh.od.nih.gov/career-development-education/e-learning/bench-bedside>

To participate in additional CME activities presented by the Johns Hopkins University School of Medicine Continuing Medical Education Office, please visit [www.hopkinscme.edu](http://www.hopkinscme.edu).