



ACTIVITY DESCRIPTION

The second internet module, titled *Sex and Gender Differences in Health and Behavior*, applies the basic concepts presented in the first course to specific conditions and organ systems in which sex and gender differences play a significant role.

INTENDED AUDIENCE

The course is designed for National Institutes of Health (NIH) staff, Food and Drug Administration (FDA) staff, and researchers and clinicians supported by the NIH; students and faculty in medical, nursing, pharmacy, and other health-related professional schools and programs; and researchers and clinicians in the pharmaceutical industry and allied health professionals.

LEARNING OBJECTIVES

After participating in this activity, the learner will demonstrate the ability to:

- Identify sex and gender differences in the presentation, risk factors, and pathophysiology of disease
- Describe how sex and gender differences in risk factors and pathophysiology affect patient outcomes and disease management
- Identify opportunities to address gaps in knowledge via future research efforts
- Describe how insights from sex and gender research in one disease area can inform research design in other fields of study

ACCREDITATION STATEMENT

This activity has been planned and implemented in accordance with the accreditation requirements and policies of the Accreditation Council for Continuing Medical Education (ACCME) through the joint providership of the Johns Hopkins University School of Medicine and NIH. The Johns Hopkins University School of Medicine is accredited by the ACCME to provide continuing medical education for physicians.



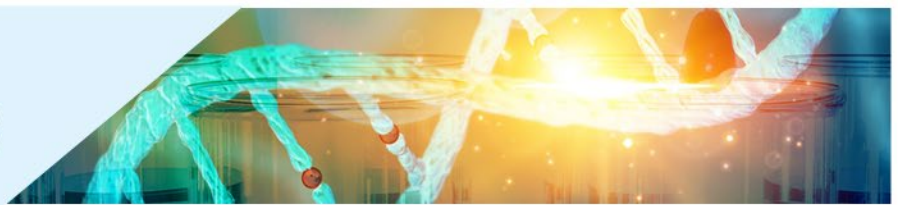
CREDIT DESIGNATION STATEMENT

The Johns Hopkins University School of Medicine designates this enduring material for a maximum of 6 *AMA PRA Category 1 Credits*[™]. Physicians should claim only the credit commensurate with the extent of their participation in the activity. The following credentialing bodies accept *AMA PRA Category 1 Credit*[™] from ACCME-accredited organizations:

- American Nurses Credentialing Center (ANCC)
- American Academy of Nurse Practitioners National Certification Program and the National Commission on Certification of Physician Assistants (NCCPA)

In addition, the Maryland State Board of Social Work Examiners and Maryland State Board of Examiners of Psychologists have reciprocity agreements with Johns Hopkins University School of Medicine.

ACTIVITY DIRECTOR



Elizabeth Barr, Ph.D.

Social and Behavioral Scientist Administrator, Office of Research on Women's Health, NIH

PLANNING COMMITTEE MEMBERS

Gretchen Buckler, M.D., M.P.H.

HHS Administration for Children and Families

Caroline Huang, Ph.D.

FDA, Office of Women's Health

Erin South, Pharm.D.

Senior Pharmacist

FDA, Office of Women's Health

Sarah Temkin, M.D. (Peer Reviewer)

Associate Director for Clinical Research, Office of Research on Women's Health, NIH; Office of Research on Women's Health, NIH

POLICY ON FACULTY AND PROVIDER DISCLOSURE

It is the policy of the Johns Hopkins University School of Medicine and NIH that the speaker and provider disclose real or apparent conflicts of interest relating to the topics of this educational activity, as well as references to unlabeled/unapproved uses of drugs or devices during their presentation(s). The Johns Hopkins University School of Medicine Office of Continuing Medical Education (OCME) has established policies in place that will identify and resolve all conflicts of interest prior to this educational activity. Detailed disclosure will be made in the activity.

FULL DISCLOSURE POLICY AFFECTING CME ACTIVITIES

As a provider approved by the ACCME, it is the policy of the Johns Hopkins University School of Medicine OCME to require signed disclosure of the existence of financial relationships with industry from any individual in a position to control the content of a CME activity sponsored by OCME. Members of the Planning Committee are required to disclose all relationships regardless of their relevance to the content of the activity. Authors are required to disclose only those relationships that are relevant to their specific presentation. The following relationships have been reported for this activity:

No one in a position to control the content of this educational activity has disclosed a relevant financial interest or relationship with any commercial interest.

OFF-LABEL PRODUCT DISCUSSION

No author has indicated that they will reference unlabeled/unapproved uses of drugs or products.

MODULES

1. Immunology



2. Cardiovascular Disease
3. Pulmonary Disease
4. Neurology
5. Endocrinology
6. Mental Health

The Johns Hopkins University School of Medicine takes responsibility for the content, quality, and scientific integrity of this CME activity.

DISCLAIMER STATEMENT

The opinions and recommendations expressed by faculty and other experts whose input is included in this program are their own. This enduring material is produced for educational purposes only. Use of the Johns Hopkins University School of Medicine name implies review of educational format design and approach. Please review the complete prescribing information of specific drugs or combination of drugs, including indications, contraindications, warnings, and adverse effects before administering pharmacologic therapy to patients.

INTERNET CME POLICY

The Johns Hopkins University School of Medicine OCME is committed to protecting the privacy of its members and customers. The OCME maintains its internet site as an information resource and service for physicians, other health professionals, and the public. The Johns Hopkins University School of Medicine OCME will keep your personal and credit information confidential when you participate in a CME internet-based program. Your information will never be provided to anyone outside of the Johns Hopkins University School of Medicine's CME program. OCME collects only the information necessary to provide you with the services that you request.

COPYRIGHT

All rights reserved — The Johns Hopkins University School of Medicine.

HIPAA STATEMENT

CONFIDENTIALITY DISCLAIMER FOR CME CONFERENCE ATTENDEES

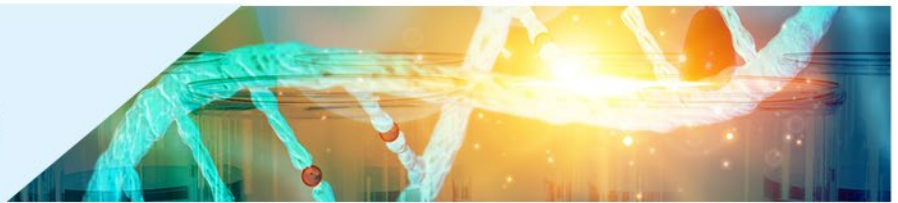
I certify that I am attending a Johns Hopkins University School of Medicine CME activity for accredited training and/or educational purposes.

I understand that while I am attending in this capacity, I may be exposed to “protected health information,” as that term is defined and used in Hopkins policies and in the federal HIPAA privacy regulations (the “Privacy Regulations”). Protected health information is information about a person’s health or treatment that identifies the person.

I pledge and agree to use and disclose any of this protected health information only for the training and/or educational purposes of my visit and to keep the information confidential. I agree not to post or discuss this



National Institutes of Health
Office of Research on Women's Health



protected health information, including pictures and/or videos, on any social media site (e.g. Facebook, Twitter, etc.), in any electronic messaging program or through any portable electronic device.

I understand that I may direct to the Johns Hopkins Privacy Officer any questions I have about my obligations under this Confidentiality Pledge or under any of the Hopkins policies and procedures and applicable laws and regulations related to confidentiality. The contact information is: Johns Hopkins Privacy Officer, telephone: 410-614-9900, e-mail: HIPAA@jhmi.edu.

“The Office of Continuing Medical Education at the Johns Hopkins University School of Medicine, as provider of this activity, has relayed information with the CME attendees/participants and certifies that the visitor is attending for training, education, and/or observation purposes only.”

For CME questions, please contact the OCME at (410) 955-2959 or cmenet@jhmi.edu.

For CME Certificates, please call (410) 502-9634.

Johns Hopkins University School of Medicine
Office of Continuing Medical Education
Turner 20/720 Rutland Avenue
Baltimore, MD 21205–2195

Reviewed and Approved by:
General Counsel, Johns Hopkins Medicine (4/1/03)
(Updated 4/09 and 3/14)

HARDWARE/SOFTWARE REQUIREMENTS

What browser should I use?

This site will function with any browser.

DATE OF RELEASE AND EXPIRATION AND ESTIMATED TIME TO COMPLETE ACTIVITY

Release Date: 1/1/2024

Expiration Date: 12/31/2024

Estimated Time to Complete This Educational Activity: 1.0 hours per credit

PREREQUISITES

There are no prerequisites to participate in this activity.

METHOD OF PARTICIPATION

To participate in this internet enduring activity and receive a credit transcript or certificate of attendance (non-physicians), you must:

1. Register.
2. Login with the e-mail address and password you used to register.



National Institutes of Health
Office of Research on Women's Health



3. Select a module from those available and complete each lesson in the selected module.
4. Complete the module's quiz with at least 70% accuracy. You can check your progress by clicking on "My Progress" in the left navigation menu. If you have not completed a quiz successfully, a red X will appear next to the lesson title. Once you successfully complete a quiz, a green checkmark will appear. You will have three chances to successfully complete the quiz. If, on your third attempt, you are unsuccessful, you will have to return another time to try again.
5. Upon receiving a passing score, complete the [course evaluation] form.
6. Once you have completed steps one through five, the Johns Hopkins University School of Medicine will be notified that you have completed the module.
7. Within 45 days of completing the module, you will receive an e-mail from the Johns Hopkins University School of Medicine OCME with instructions on how to retrieve your transcript electronically. Please note that these instructions will be sent to the e-mail address you provided when you registered.
8. If additional CMEs are desired, repeat steps one through seven for each additional module. A total of 6 CME credits are available.

URL

<https://orwh.od.nih.gov/career-development-education/e-learning/bench-bedside>

To participate in additional CME activities presented by the Johns Hopkins University School of Medicine OCME, please visit www.hopkinscme.edu.