

Autoimmune Disease Research Portfolio

Auditory/Ear

| |
|------------------------------|
| Autoimmune inner ear disease |
| Cogan's syndrome |
| Meniere's disease |

Complex Comorbid Conditions

| |
|-------------------------|
| Autoimmune dysautonomia |
| Chronic Lyme disease |
| Fibromyalgia |
| Interstitial cystitis |
| Narcolepsy |

Dermatologic/Mucosa

| |
|---|
| Alopecia areata |
| Autoimmune urticaria |
| Benign mucosal pemphigoid |
| Bullous pemphigoid |
| Cicatricial pemphigoid |
| Hidradenitis suppurativa |
| Lichen planus |
| Lichen sclerosus |
| Pityriasis lichenoides et varioliformis acuta (PLEVA) |
| Pemphigus |
| Pyoderma gangrenosum |
| Vitiligo |

Endocrine

| |
|--|
| Addison's disease |
| Graves' disease |
| Hashimoto's thyroiditis |
| Polyglandular syndromes types I,II,III |
| Thyroid eye disease |
| Type 1 diabetes |

Gastrointestinal

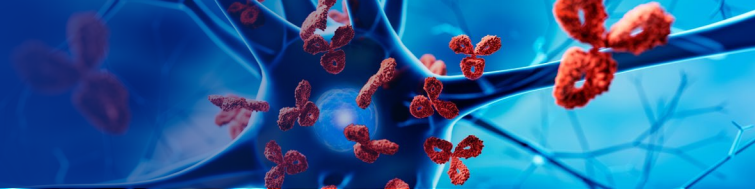
| |
|--------------------------------|
| Autoimmune hepatitis |
| Autoimmune pancreatitis |
| Celiac disease |
| Crohn's disease |
| Dermatitis herpetiformis |
| Eosinophilic esophagitis |
| Primary biliary cholangitis |
| Primary sclerosing cholangitis |
| Ulcerative colitis |

Gynecological and Fertility

| |
|-------------------------|
| Autoimmune oophoritis |
| Autoimmune orchitis |
| Herpes gestationis |
| Progesterone dermatitis |
| Endometriosis |

Hematology

| |
|-------------------------------------|
| Agammaglobulinemia |
| Amyloidosis |
| Autoimmune angioedema |
| Autoimmune hemolytic anemia |
| Autoimmune neutropenia |
| Autoimmune thrombocytopenic purpura |
| Castleman disease |
| Cold agglutinin disease |
| Essential mixed cryoglobulinemia |
| Paroxysmal nocturnal hemoglobinuria |
| Pernicious anemia |
| POEMS syndrome |
| Pure red cell aplasia |

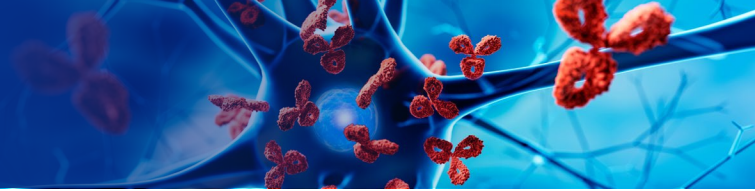


Lupus/Scleroderma/Myositis

| |
|--------------------------------------|
| Antiphospholipid syndrome |
| Congenital heart block |
| CREST syndrome (Limited scleroderma) |
| Dermatomyositis |
| Discoid lupus |
| Eosinophilic fasciitis |
| Evans syndrome |
| Inclusion body myositis |
| Juvenile myositis |
| Mixed connective tissue disease |
| Myositis/Polymyositis |
| Neonatal lupus |
| Progressive hemifacial atrophy |
| Raynaud's phenomenon |
| Scleroderma |
| Sjögren's disease |
| Systemic Lupus Erythematosus |

Neurologic/Myelin-related

| |
|---|
| Anti-Myelin oligodendrocyte glycoprotein (MOG) |
| Autoimmune encephalitis |
| Baló disease |
| Chronic inflammatory demyelinating polyneuropathy |
| Complex regional pain syndrome |
| Guillain-Barre syndrome |
| Lambert-Eaton syndrome |
| Multifocal motor neuropathy |
| Multiple sclerosis |
| Myasthenia gravis |
| Neuromyelitis optica |
| Optic neuritis |
| Paraneoplastic cerebellar degeneration |
| Brachial neuritis (Parsonage-Turner syndrome) |
| Perivenous encephalomyelitis |
| Stiff person syndrome |
| Transverse myelitis |



Ocular/Eye

| |
|------------------------|
| Autoimmune retinopathy |
| Autoimmune uveitis |
| Pars planitis |
| Scleritis |
| Sympathetic ophthalmia |
| Tolosa-Hunt syndrome |

Pulmonary

| |
|--------------------------------|
| Erythema nodosum |
| Fibrosing alveolitis |
| Pulmonary Alveolar Proteinosis |
| Sarcoidosis |

Rheumatoid Arthritis and Seronegatives

| |
|-------------------------------|
| Ankylosing spondylitis |
| Juvenile idiopathic arthritis |
| Palindromic rheumatism |
| Psoriasis |
| Psoriatic arthritis |
| Reactive arthritis |
| Rheumatoid arthritis |

Renal

| |
|--------------------------|
| Glomerulonephritis |
| Goodpasture's syndrome |
| Henoch-Schonlein purpura |
| IgA nephropathy |
| Linear IgA disease |

Systemic Inflammatory Conditions

| |
|---|
| Adult Still's disease |
| Myocarditis |
| Chronic recurrent multifocal osteomyelitis |
| Postmyocardial infarction syndrome (Dressler's syndrome) |
| Giant cell myocarditis |
| Kawasaki disease |
| Pediatric autoimmune neuropsychiatric disorders associated with streptococcus infections (PANDAS) |
| Rheumatic fever |

Vasculitis

| |
|----------------------------------|
| Autoimmune vasculitis |
| Behcet's disease |
| Churg-Strauss syndrome |
| Giant cell arteritis |
| Granulomatosis with polyangiitis |
| IgG4-related sclerosing disease |
| Microscopic polyangiitis |
| Polyarteritis nodosa |
| Relapsing polychondritis |
| Polymyalgia rheumatica |
| Retroperitoneal fibrosis |
| Susac's syndrome |
| Takayasu's arteritis |
| Vogt-Koyanagi-Harada disease |