

## ORWH Staff Publications | Since April 2022

Yoko Ogawa, ... **Janine A. Clayton** et al. Multicenter prospective validation study for international chronic ocular graft-versus-host disease consensus diagnostic criteria.

***The Ocular Surface***. DOI: 10.1016/j.jtos.2022.09.002

Jigar V. Desai, ... **Pamela Stratton** et al. Efficacy of cochleated amphotericin B in mouse and human mucocutaneous candidiasis. ***Antimicrob Agents Chemother***.

DOI:10.1128/aac.00308-22

**Sarah M. Temkin, Samia Noursi, ... Pamela Stratton, and Janine A. Clayton.**

Perspectives from Advancing National Institutes of Health Research to Inform and Improve the Health of Women: a Conference summary. ***Obstet Gynecol***.

DOI: 10.1097/AOG.0000000000004821

B.J. Rimel, ... **Sarah M. Temkin**. Current gaps and opportunities in screening, prevention, and treatment of cervical cancer. ***Cancer***. DOI: 10.1002/cncr.34487

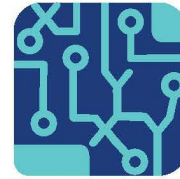
**Jamie White** and **Janine A. Clayton**. The gender health innovation gap: A perspective from the NIH Office of Research on Women's Health. ***Med***. DOI: 10.1016/j.medj.2022.04.010

### Podcast

**Chryen Hunter**. NIH All About Grants Podcast – Sex As a Biological Variable.

<https://nexus.od.nih.gov/all/2022/07/21/nih-all-about-grants-podcast-sex-as-a-biological-variable/>

Specialized Centers of  
Research Excellence  
on Sex Differences



*The National Institutes of Health (NIH) Office of  
Research on Women's Health (ORWH) presents:*



**SCORE**

# Annual Meeting

## THE SPECIALIZED CENTERS OF RESEARCH EXCELLENCE ON SEX DIFFERENCES (SCORE) ANNUAL MEETING KEYNOTE ADDRESS

Tuesday, November 1, 2022 | 10:00 a.m. – 11:00 a.m. EDT

### “Next-Generation Sex and Gender Science”

..... FEATURING: .....



**Cara Tannenbaum , M.D., M.Sc.**  
Institute of Gender and Health



National Institutes of Health  
Office of Research on Women's Health

#SCORE2022

[nih.gov/women](https://nih.gov/women)



# Quotable

**The idea that addressing #SABV is uniquely challenging for scientists when many have been doing it well for decades (and providing free roadmaps) is insulting. Resistance to rigor is a choice.”**

Shansky Lab, Twitter (Sep. 15)

# Media Hits | Since April 2022

- **Prevent Blindness** | “Focus on Eye Health Expert Series: Women’s Eye Health and Safety Month,” April 13
- **Giddy** | “Improving the Quality of Care for Ovarian Cancer Patients,” June 13
- **Pharmacy Times** | “The Impact of the Pandemic on the Careers of Women Researchers in Biomedicine,” Aug. 5
- **Pharmacy Times** | “NIH Expert: Stigma Around Paternal Leave Contributes to Gender Inequity in Medical Research Field,” Aug. 12
- **MIT Technology Review** | “The Quest to Show That Biological Sex Matters in the Immune System,” Aug. 15
- **Nature** | “The Fraught Quest to Account for Sex in Biology Research,” Sep. 13
- **Pharmacy Times** | “New NIH Program Funds Efforts to Improve Gender Equity in Science, Health Care Fields,” Sep. 19
- **Pharmacy Times** | “NIH Requests Input from Pharmacists on Wide Strategic Plan for Research on Women’s Health,” Sep. 27





Miguel-Aliaga says that even ... findings of no [sex] differences are informative. 'It's still good to know that whatever you're studying doesn't show sexual dimorphism or that the treatment it might lead to could apply to both sexes.' **Doing these studies is 'a win-win'.**"

Geneticist Irene Miguel-Aliaga, Imperial College London, and contributor to sex in experimental design guidance, UK Medical Research Council. *Nature*, Sep. 13, 2022

Building Interdisciplinary  
Research Careers in  
Women's Health



*The National Institutes of Health (NIH) Office of  
Research on Women's Health (ORWH) presents:*



# Annual Meeting

## THE 2022 BUILDING INTERDISCIPLINARY RESEARCH CAREERS IN WOMEN'S HEALTH (BIRCWH) ANNUAL MEETING

Wednesday, November 2, 2022 | 10:00 a.m. – 4:00 p.m. EDT

..... FEATURED SPEAKERS .....

**Keynote Speaker**  
**Ruth L. Kirschstein Memorial Lecture**



Katherine E. Hartmann,  
M.D., Ph.D.

**Legacy of Leadership Lecture**



Judith A. James,  
M.D., Ph.D.



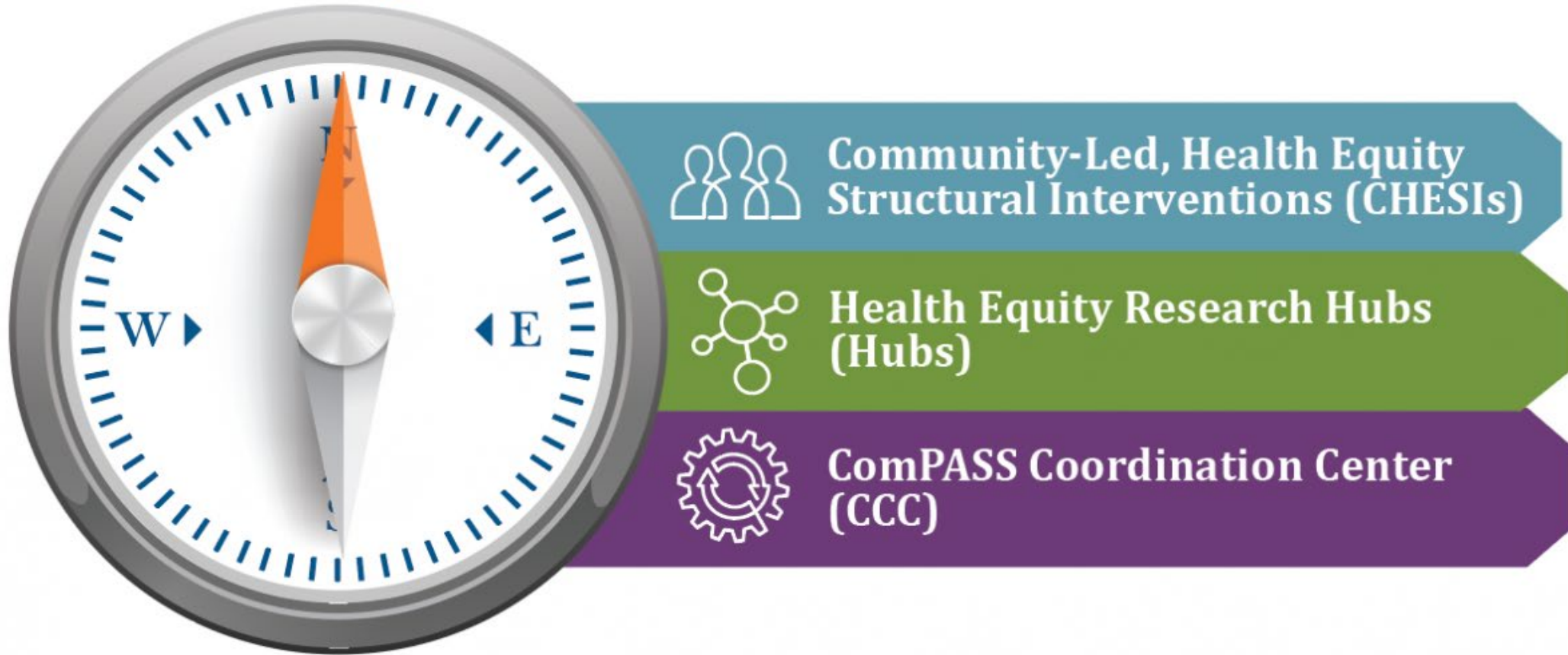
#2022BIRCWH

[nih.gov/women](https://nih.gov/women)

# ComPASS Initiatives

## Community Partnerships to Advance Science for Society

### HEALTH EQUITY





# Submit Letter of Intent for

Community-Led, Health Equity  
Structural Intervention Initiative

**Due by November 18, 2022**



[commonfund.nih.gov/sites/default/files/OTA-22-007.pdf](https://commonfund.nih.gov/sites/default/files/OTA-22-007.pdf)



The National Institutes of Health (NIH) Office of Research on Women's Health (ORWH) presents:

# Gender and Health: Impacts of Structural Sexism, Gender Norms, Relational Power Dynamics, and Gender Inequities

October 26, 2022, 11:00 a.m.–4:30 p.m. EDT | *Virtual only*

## Featured Plenary Speakers:



Nancy Krieger,  
Ph.D.



Patricia Homan,  
Ph.D., M.A.



Typhanye Vielka Dyer,  
Ph.D., M.P.H.

In partnership with NICHD, NIA, NIAID, NCI, NHLBI, NIDDK, NINDS, NIMH, NIDA, and OBSSR.



National Institutes of Health  
Office of Research on Women's Health

[nih.gov/women](https://nih.gov/women)

#NIHGenderHealth



National Institutes of Health  
Office of Research on Women's Health