

NIH Office of Research on Women's Health (ORWH)



61st Meeting of the NIH Advisory Committee on Research on Women's Health



Janine Austin Clayton, M.D., FARVO

NIH Associate Director for Research on Women's Health
Director, Office of Research on Women's Health
National Institutes of Health

Director's Report – October 8, 2024



Agenda



1

Opening
Remarks

2

NIH and
ORWH Updates

3

Policy &
Scientific
Updates

4

Careers

5

Closing

ORWH and National Library of Medicine Connect Women's Health Research to Communities Through DiscoverWHR



Home About Funding Select a Research Area ▾

DiscoverWHR is a centralized resource for women's health research and information from NIH that supports NIH-wide efforts to close the gaps in women's health across the life course.

Select a research area to explore:

[Menopause](#)

[Polycystic Ovary Syndrome \(PCOS\)](#)

Autoimmune Diseases (selected conditions)

- [Lupus](#)
- [Rheumatoid Arthritis](#)
- [Scleroderma](#)

More coming to this site soon!

This site provides information on NIH-funded:

-  Open funding opportunities
-  Awarded research projects
-  Recruiting and upcoming clinical trials
-  Latest literature published on NIH-funded research
-  Patient-friendly summaries of health topics

NIH Office of Research on Women's Health (ORWH)



NIH and ORWH Updates





NIH Director Leads the Charge For Advancing Women's Health Research Initiatives

Forging into the Future: Research on the Health of Women at NIH and Beyond



Diagnosis and Treatment of Mental Health Conditions During and After Pregnancy is On the Rise, But Disparities Still Exist



National Women's Health Week #NWHW24
Events and Activities

MAY 12 - 18, 2024

Maternal Brain Hormone Key to Strengthening Bones Could Help Treat Osteoporosis, Bone Fractures



Communities Advancing Research Equity for Health (CARE for Health™)

Conduct research addressing **issues important to diverse communities**, particularly those **underrepresented** in biomedical research

Reduce burden on providers using innovative data collection methods

Integrate research into the clinical care environment

Engender trust in science by addressing community needs

Achieve **longitudinal collection of clinical data** to address health across the lifespan

Increase adherence to **evidence-based care**

Improve **efficiency of care delivery**



Community-based primary care practices



Geri R. Donenberg, Ph.D., M.P.H.
NIH Associate Director for AIDS Research
Director, NIH Office of AIDS Research

1



Annica M. Wayman, Ph.D., M.S.
Deputy Director
National Center for Advancing
Translational Sciences

2

12

Number of women
IC deputy directors



13

Number of women
IC directors



¹Photo credit: <https://www.nih.gov/about-nih/who-we-are/nih-director/statements/dr-geri-donenberg-named-nih-associate-director-aids-research>

²Photo credit: <https://ncats.nih.gov/about/our-staff/waymanam>



Lucia Hindorff, Ph.D., M.P.H.
Senior Advisor for Scientific and
Organizational Strategy, ORWH





Women's Health Research on the Agenda for NIH Advisory Councils - Insights and Updates

- National Library of Medicine Board of Regents (Advisory Council)
- National Advisory Council for Biomedical Imaging and Bioengineering
- NIH 128th Advisory Committee to the Director
- National Advisory Council on Aging



Holly A. Ingraham, Ph.D.

Professor Cellular and Molecular
Pharmacology Herzstein Endowed Professor

***“Unlocking Secrets of Female Physiology
to Improve Human Health in Aging”***



A maternal brain hormone that builds bone

[Muriel E. Babey](#), [William C. Krause](#), [Kun Chen](#), [Candice B. Herber](#), [Zsofia Torok](#), [Joni Nikkanen](#), [Ruben Rodriguez](#), [Xiao Zhang](#), [Fernanda Castro-Navarro](#), [Yuting Wang](#), [Erika E. Wheeler](#), [Saul Villeda](#), [J. Kent Leach](#), [Nancy E. Lane](#), [Erica L. Scheller](#), [Charles K. F. Chan](#), [Thomas H. Ambrosi](#) & [Holly A. Ingraham](#)

Nature 632, 357–365 (2024)



Advancing Women's Health on National and Global Platforms

- » Society for Women's Health Research 2024 Annual Awards Event
- » Foundation for the National Institutes of Health - Patient Engagement Summit

- » Annual Meeting of the Champions of the Global Alliance for Women's Health
- » 79th United Nations General Assembly (UNGA79) – 9th Edition of the Science Summit



1



2



Policy and Scientific Updates



ComPASS Announces New Hubs to Amplify Community Action for Health Equity

To advance the science of health disparities and health equity research, the NIH Common Fund launched the ComPASS Program.



Community-Led, Health Equity Structural Interventions (CHESIs)

25 awards made in 2023



ComPASS Coordination Center (CCC)

1 award made in 2023



Health Equity Research Hubs (Hubs)

5 awards made in 2024

The goals of ComPASS are to:

- 1 Catalyze, deploy, and evaluate **community-led** health equity **structural interventions** that leverage partnerships across multiple sectors to reduce health disparities
- 2 Develop a **new health equity research model** for community-led, multisectoral structural intervention research across NIH and other federal agencies



- ★ CHESI Award Sites
- ★ ComPASS Coordinating Center
- ★ ComPASS Hubs

ComPASS Research Hubs Advance Health Equity Through Community-Led Interventions

The Southeast Center for Health Achievement and Growth in Equity (SEACHANGE) Hub

- **Project Leader:** Caroline Compretta
- **Organization:** University of Mississippi Medical Center
- **Domain(s):** Social and Cultural Context



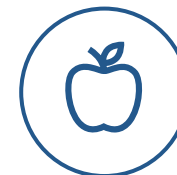
ComPASS Health Equity Research Hub at UMB

- **Project Leader:** C Daniel Mullins
- **Organization:** University of Maryland, Baltimore
- **Domain(s):** Community Health Access, Built Environment, Social and Cultural Context



ComPASS Health Equity Research Hub at Yale

- **Project Leaders:** Marcella Nunez-Smith, Carol Renee Oladele
- **Organization:** Yale University
- **Domain(s):** Nutrition and Food Environment



ComPASS Research Hubs Advance Health Equity Through Community-Led Interventions

The SHHare Community Project: The Shared Hub for Health Action Research and Equity in Community-led Interventions

- **Project Leaders:** Ayana Jordan, Brian Elbel, Lorna Thorpe, Chau Trinh-Shevrin
- **Organization:** New York University Grossman School of Medicine
- **Domain(s):** Nutrition and Food Environment, Social and Cultural Context



Partners Engaged in Equity Research (PEER) Hub

- **Project Leaders:** Roshanak Mehdipanah, Justin Edward Heinze
- **Organization:** University of Michigan at Ann Arbor
- **Domain(s):** Community Health Access, Nutrition and Food Environment, Built Environment, Economic Development, Social and Cultural Context



ComPASS Annual Meeting Highlights Health Equity Interventions



CHESI: Waianae Coast Comprehensive Health Center
PI: May Okihiro, M.D.

Project Title: Kamaehu o ke Kaiāulu - Fostering Community Connections Through Native Hawaiian Cultural Values to Strengthen Youth Resilience, Health, and Well-Being

NIH-Wide Strategic Plan Outlines a Vision for Research on the Health of Women 2024-2028

GOALS



Advance research on the biological, behavioral, social, structural, and environmental factors influencing women's health



Improve data science and management with innovative research methods and cutting-edge technologies to prevent and treat conditions affecting women



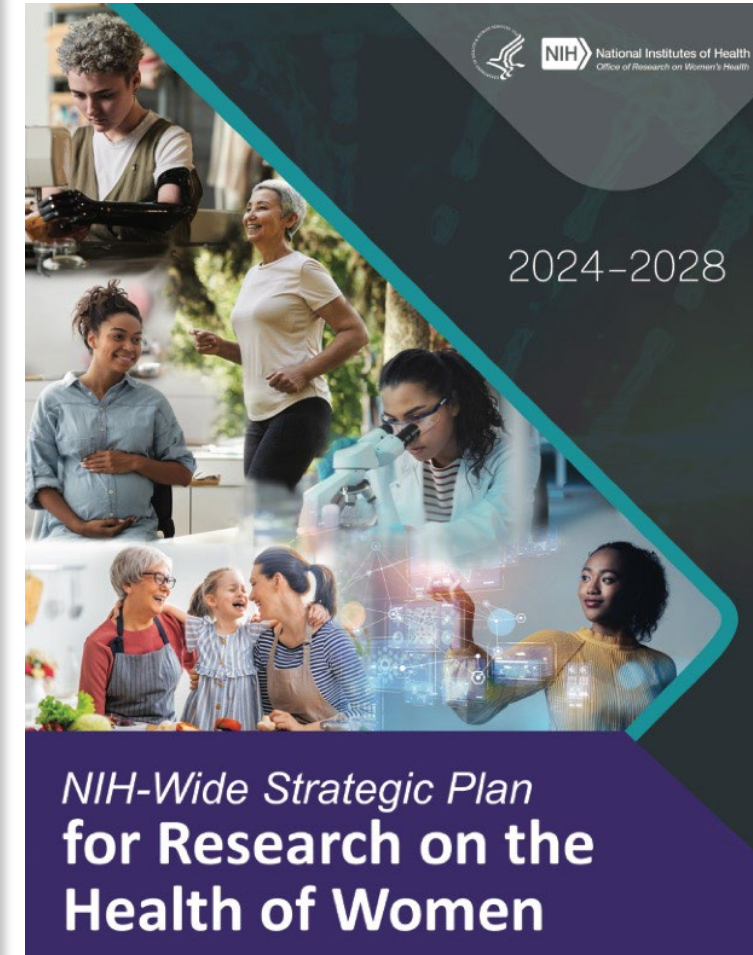
Foster women scientists' career development and promote **training** in women's health and sex and gender science



Support basic and translational research on sex influences in health and disease across women's life course



Advance community-engaged science and **enhance the dissemination of evidence-based solutions** to improve the women's health



Adoption of SAGER Guidelines Enhances Research Rigor

- **Accessed 937,000 times**, and approaching the 1 millionth access
- **Cited nearly 700 times**, now widely adopted by major academic publishers and many organizations and institutions
- Formally **adopted by the World Health Organization**, a major milestone
- **Translated into 7 languages**, thanks to the regional editorial societies and members
- **Included in the EQUATOR website**
- **Listed in the Research Reporting Guidelines** of the US National Library of Medicine



Promoting Respect Through Evolving Data Collection Standards Fosters Sex and Gender Integration in Journals



JOURNAL of the
NATIONAL CANCER INSTITUTE

Issues More Content ▾ Submit ▾ Purchase Alerts About ▾

JNCI: Journal of the Nation ▾



Advanced Search

Detailed inclusive language guidelines

Summary characteristics (e.g., mean age, percent of patients in most common sex, race, ethnicity, or other relevant sociodemographic groups) should be reported in in the “Results” section of your manuscript. Baseline characteristics that are relevant to the study question should also be reported in the Abstract. The method used to collect sociodemographic information should be described in the “Methods” section. If any demographic characteristics cannot be reported, you must state the reason for the reader.



“ In research Articles and Brief Communications, sex or gender should be reported and defined, and how sex or gender was assessed should be described. Whenever possible, report all main outcomes by sex (or gender if appropriate). ”



Orthopedic Surgery Journal Implements Sex and Gender Guidelines to Enhance Reporting Quality

1423

Inclusion of Sex and Gender to Improve the State of the Science in Women's Health

Sarah M. Temkin, MD, FACS, and Janine Austin Clayton, MD, FARVO

Investigation performed at the Office of Research on Women's Health, National Institutes of Health, Bethesda, Maryland

Abstract: The influence of sex and gender-related factors on health and disease at all levels of scale, across all health conditions, and throughout the entire life course is increasingly clear. A series of policies instituted by the National Institutes of Health (NIH) that require researchers to include appropriate populations and to analyze the data accordingly have strengthened the evidence base around the health of women. Translating these advances to the entire research ecosystem can catalyze rigorous biomedical discovery that can improve health. We encourage journals, publishers, and funders to align their policies and expectations regarding sex and gender considerations in research with those of the NIH and other international funding agencies.



National Institute of Arthritis and Musculoskeletal and Skin Diseases





Orthopedic Surgery Journal Implements Sex and Gender Guidelines to Enhance Reporting Quality

1423

Inclusion of Sex and Gender to Improve the State of the Science in Women's Health

Sarah M. Temkin, MD, FACS, and Janine Austin Clayton, MD, FARVO

Investigation performed at the Office of Research on Women's Health, National Institutes of Health, Bethesda, Maryland

Abstract: The influence of sex and gender-related factors on health and disease at all levels of scale, across all health conditions, and throughout the entire life course is increasingly clear. A series of policies instituted by the National Institutes of Health (NIH) that require researchers to include appropriate populations and to analyze the data accordingly have strengthened the evidence base around the health of women. Translating these advances to the entire research ecosystem can catalyze rigorous biomedical discovery that can improve health. We encourage journals, publishers, and funders to align their policies and expectations regarding sex and gender considerations in research with those of the NIH and other international funding agencies.

Translating these advances to the entire research ecosystem can catalyze rigorous biomedical discovery that can improve health



Engaging the Community Experience and Insights in Closing the Gaps on Autoimmune Health Care

Arthritis
& Rheumatology

AN OFFICIAL JOURNAL OF
THE AMERICAN COLLEGE OF
RHEUMATOLOGY

AMERICAN COLLEGE
of RHEUMATOLOGY
Empowering Rheumatology Professionals

Notes from the Field |  Open Access | 

Introducing the Office of Autoimmune Disease Research

Victoria K. Shanmugam , Janine A. Clayton

First published: 25 February 2024 | <https://doi.org/10.1002/art.42837> | Citations: 1

Author disclosures are available at <https://onlinelibrary.wiley.com/doi/10.1002/art.42837>.



Objective 1: Identify research areas for cross-disciplinary collaboration, including clinical, population, and data sciences.



Objective 2: Explore opportunities to enhance collaboration and innovation in autoimmune disease research through interdisciplinary approaches.



Objective 3: Improve outcomes for individuals with autoimmune diseases, especially within health disparity populations and historically underrepresented groups.

A “Call To Action” for Nurse Researchers



Nursing Outlook

Volume 72, Issue 4, July–August 2024, 102194



Ensuring accountability for consideration of sex as a biological variable in research

Elizabeth A. Kostas-Polston PhD, FAANP, FAAN^{a 1} ✉, Margaret Bevens PhD, RN, FAAN^{b 1},
Tamra L. Shea PhD, RN, CNE^c, Kelly McGlothen-Bell PhD, RN, FAWHONN^d,
Mary A. Nies PhD, FAAN, FAAHB^e, Ivy M. Alexander PhD, FAANP, FAAN^f,
Versie Johnson-Mallard PhD, FAANP, FAAN^g, Janine Austin Clayton MD, FARVO^h

- Despite consensus that sex and gender are distinct constructs, their application in research remains inconsistent.
- Key recommendations to advance generation and dissemination of rigorous research are provided.
- The SAGER guidelines promote a systematic reporting approach to sex and gender in research studies.

Genetic Insights into Mosaic Loss of Chromosome X (mLOX) and Its Health Implications

National Cancer Institute

Health Information

Grants & Funding

News & Events

Research & Training

Home » News & Events » News Releases

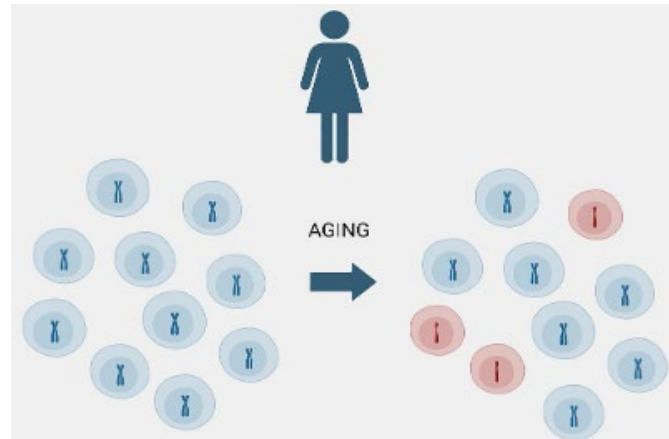
NEWS RELEASES

Media Advisory

Wednesday, June 12, 2024

Inherited genetic factors may predict the pattern of X chromosome loss in older women

A genomic analysis co-led by NIH suggests that the DNA a woman is born with may influence how her cells respond to chromosomal abnormalities acquired with aging.



- **Large-Scale Study:** Analysis of nearly 900,000 women uncovered 56 common genetic variants associated with mLOX, alongside rare variants that significantly heighten risk. (NCI)
- **Inherited Genetic Variants:** Researchers identified inherited variants that may predict the age-related loss of one X chromosome in women.
- **Associated Health Risks:** mLOX is linked to abnormal blood cell proliferation and various health issues, including cancer.
- **Future Implications:** Findings may lead to predictive tools for determining which X chromosome is retained, emphasizing the need for further exploration of mLOX's role in disease risk.

National Library of Medicine Modernizes Clinical Trials Website



For more information visit [ClinicalTrials.gov](https://clinicaltrials.gov)

REMINDER: Applicable Phase III Trial Results must be reported online

White House Initiative Transforms Women's Health Research



November 13, 2023
Presidential Memorandum
“White House Initiative on
Women’s Health Research”
announced

December 2023
Input from NIH & IC
leadership, all ICOs through
CCRWH, and ORWH-led
NIH-wide working groups

December 28, 2023
NIH response submitted to
the White House

March 18, 2024
Executive Order 14120:
Advancing Women’s Health
Research and Innovation
signed



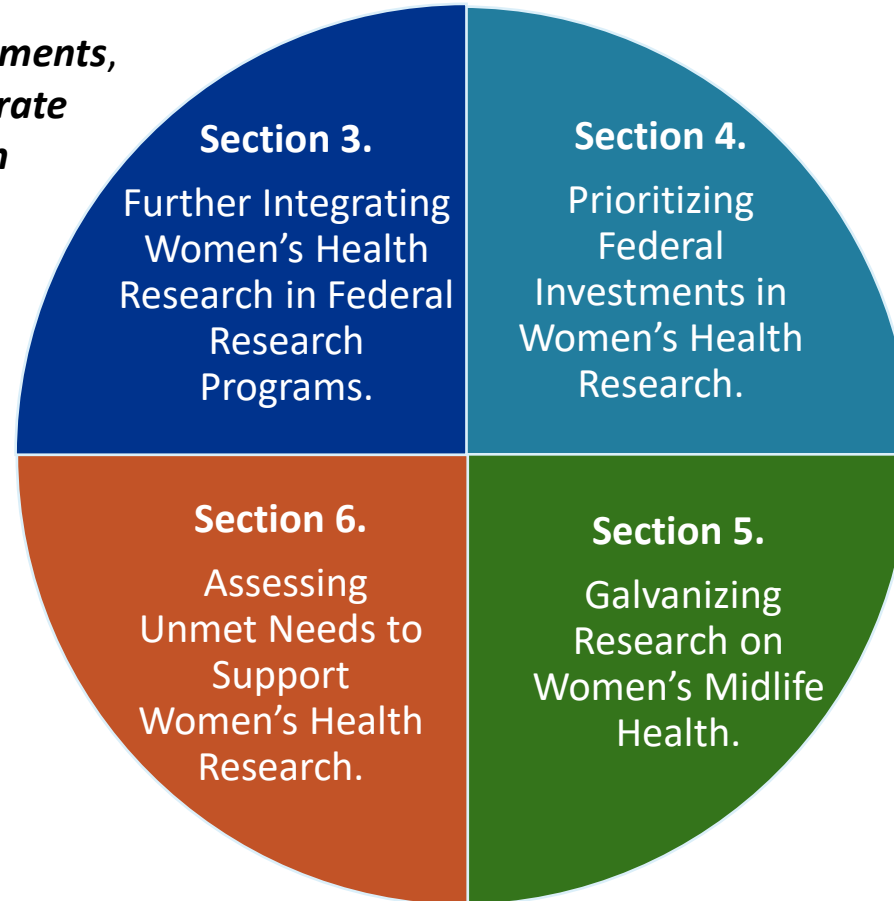
Executive Order 14120 Extends Across U.S. Government Partners





Executive Order 14120: Advance Women’s Health Research and Innovation Includes Multiple Sections

- Advancing *system-wide enhancements*, to *business processes to incorporate consideration of women’s health across the grant lifecycle*.



- *Issued a NIH-wide Notice of Special Interest* to highlight interest and pathways for *women’s health research*.

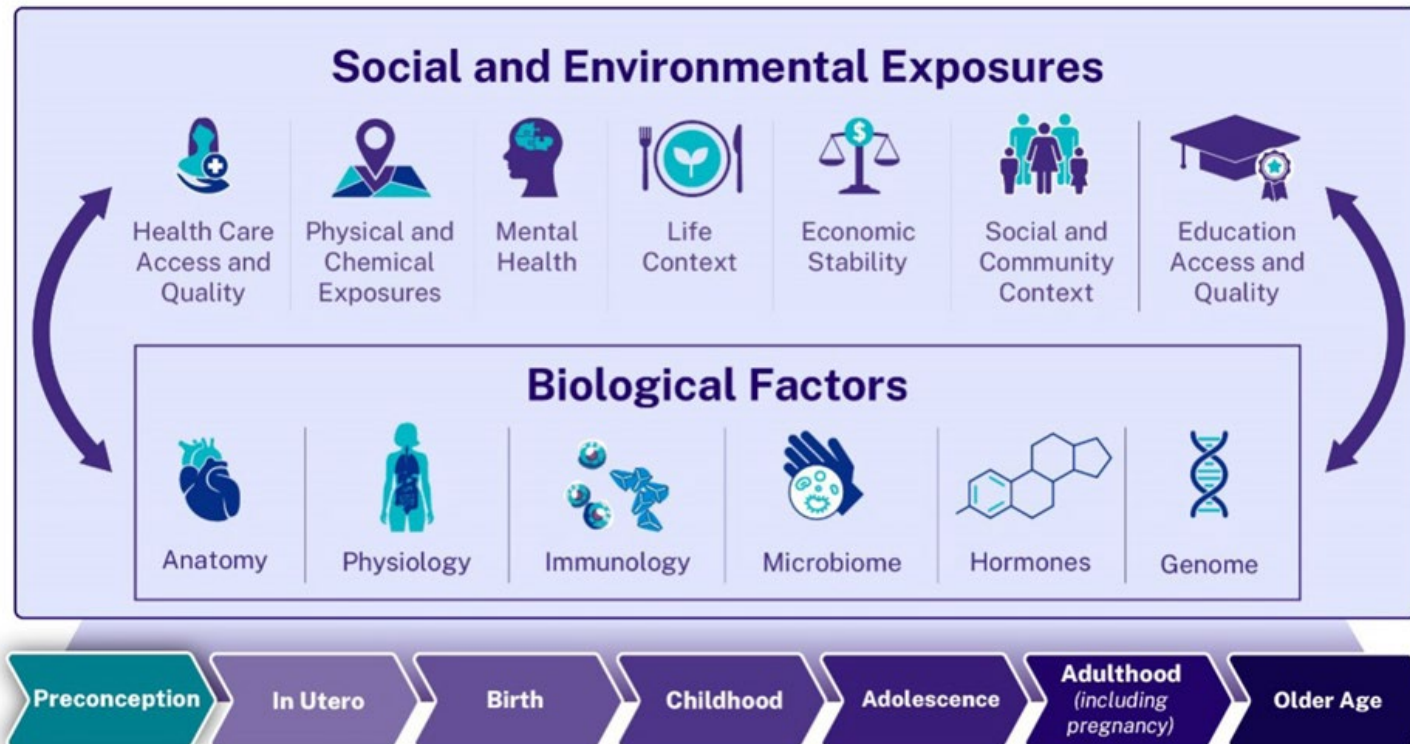
- Participating in a robust effort to *assess gaps in federal funding* for women’s health research and *identify necessary changes—whether statutory, regulatory, or budgetary*.

- *Menopause CDE Working Group*, which completed an *NIH-wide landscape analysis to identify CDE related gaps* and is working toward *harmonizing existing menopause CDEs and creating new ones*.



NIH Cross-Cutting Effort to Transform Women's Health Throughout the Lifespan

Health of Women Across the Life Course



NIH is launching an NIH-wide effort to close gaps in women's health research across the lifespan. This effort will direct key **investments of \$200 million** to fund new, interdisciplinary women's health research that cuts across the traditional mandates of the Institutes and Centers at NIH.

This NIH-wide effort, will be co-chaired by:
Directors of NIH Office of Research on Women's Health and:

- National Institute on Aging
- National Institute on Arthritis, Musculoskeletal and Skin Disease
- *Eunice Kennedy Shriver* National Institute of Child Health and Human Development
- National Institute on Drug Abuse
- National Heart, Lung and Blood Institute

Enhancing Women's Health Research Through Collaboration



Aligning Women's Health Efforts Across NIH and USG Agencies

- Increase access and collaboration to **close research gaps** with **new women's health research, survey tools, analyses, and insights**.
- **Enhance data collection and transparency** in reporting of NIH support of female-specific diseases and conditions with standardized methodology.
- **Streamline women's health efforts and amplifies priorities** across multiple sectors of the federal government.



NIH DiscoverWHR

The **National Library of Medicine (NLM)**, in partnership with ORWH, makes **NIH research opportunities and women's health data from NIH-supported research findings** available for researchers, practitioners, and the public.

Menopause Health RCDC

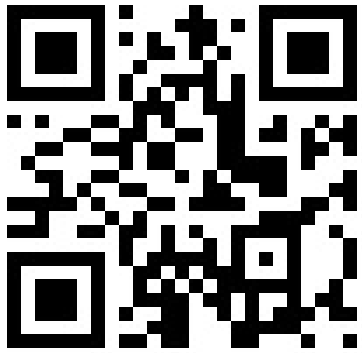
NIH recently published **Research Condition and Disease Categorization (RCDC)** funding on **menopause**, which demonstrates **enhanced data collection and transparency** in reporting of NIH support of female-specific diseases and conditions with standardized methodology.

National Health Interview Survey: Menopause Questions

ORWH and the **Centers for Disease Control and Prevention (CDC)** have **collaborated to develop a set of questions about the most critical aspects of menopause status**, which will be included in the 2025 CDC National Health Interview Survey.

Women's Health Research Funding Notice of Special Interest

41 Paths to Women's Health Funding



NOT-OD-24-079

Research Grants

7 Announcements for Unsolicited or Investigator-Initiated Research Projects

15 Announcements for Solicited Research Projects

Career Development Grants

10 Announcements for Career Development Awards

Fellowship Grants

5 Announcements for Fellowships

Small Business Grants

Omnibus Solicitation Small Business Innovation Research Applications

Omnibus Solicitation for Small Business Technology Transfer Applications

175+ priority topics identified in the Notice



30 participating NIH Institutes, Centers, and Offices



The Front Door:

NIH Women's Health Research Funding Opportunities

NEW

Features +160 Notices of Funding Opportunities (NOFOs)
(Regularly Updated)

The NIH Women's Health Funding FRONT DOOR

NIH National Institutes of Health
Office of Research on Women's Health

Putting science to work for the health of women

OFFICE OF AUTOIMMUNE DISEASE RESEARCH

OUR WORK RESOURCES & TRAINING SEX & GENDER WOMEN'S HEALTH EQUITY & INCLUSION CAREER SUPPORT ABOUT ORWH

HOME > WOMEN'S HEALTH EQUITY & INCLUSION > ORWH RESEARCH PROGRAMS & INITIATIVES > WOMEN'S HEALTH FUNDING OPPORTUNITIES

Women's Health Funding Opportunities

This page includes notices of funding opportunity at NIH related to women's health, divided into three categories:

- ORWH Funding Opportunities and Notices
- ORWH Participating Funding Opportunities and Notices
- Additional NIH Women's Health Funding Opportunities

- ORWH Opportunities and Notices (**11**)
- ORWH Participating Funding Opportunities and Notices (**112**)
- NIH Women's Health Funding Opportunities
- Highlights (**42**) NIH Notices of Funding Opportunities (NOFOs)

Innovation in Women's Health Research at NIH



In response to **Executive Order 14120**, NIH committed to **increasing funding by up to 50%** to support early-stage small businesses and innovators in women's health research and development.



Women's Health added to the **Fiscal Year 2025 Omnibus Solicitation** for SBIR and STTR grant applications. The next **submission dates are January 5, 2025, and April 5, 2025.**

+ ORWH



| January | | | | | | | April | | | | | | |
|---------|----|----|----|----|----|----|-------|----|----|----|----|----|----|
| M | T | W | T | F | S | S | M | T | W | T | F | S | S |
| | | | | | 4 | 5 | | 1 | 2 | 3 | 4 | 5 | 6 |
| 6 | 7 | 8 | 9 | 10 | 11 | 12 | 7 | 8 | 9 | 10 | 11 | 12 | 13 |
| 13 | 14 | 15 | 16 | 17 | 18 | 19 | 14 | 15 | 16 | 17 | 18 | 19 | 20 |
| 20 | 21 | 22 | 23 | 24 | 25 | 26 | 21 | 22 | 23 | 24 | 25 | 26 | 27 |
| 27 | 28 | 29 | 30 | 31 | | | 28 | 29 | 30 | | | | |

NIH's SBIR and STTR programs, managed by the **Small Business Education and Entrepreneurial Development (SEED) Office**, **support research and development in small businesses.**



NIH's **RADx® Tech ACT ENDO Challenge**, co-led by NICHD and NIBIB, **accelerates the development of innovative technologies to improve the diagnosis of endometriosis.**

RADx® Tech ACT ENDO Challenge
Advancing Cures and Therapies and ending ENDOmetriosis diagnostic delays

NIH National Institutes of Health
Turning Discovery into Health



Expanding Opportunities for Women's Health Innovation in Small Businesses



Bloomer Tech

Founded by Alicia Chong Rodriguez in Cambridge, MA, Bloomer Tech develops **wearable ECG devices for women (Smart Bra)**. Chong Rodriguez received a Phase II SBIR grant from **NHLBI** and the 2024 ACC Innovation Pitch Challenge Grand Prize and is conducting a clinical study with UF Health and Lakeland Regional Hospital.



ACMA Social Marketing

A direct to Phase II SBIR from **NCI**, along with a matching grant from Oregon's Business Development Department, helped Ana Consuela Matiella build a **mobile app called De Las Mías, promoting healthy lifestyles among Latinas**. Users can track health behaviors, read articles, access nutritionist-developed recipes, and find community support.

FY25 marks ORWH's first participation in the NIH Omnibus solicitations for SBIR and STTR.

Three webinars with ICO Small Business Offices:



June 26, 2024

NIMHD, NINDS, NHLBI, NIBIB, NIDA, NICHD

October 30, 2024

NEI, NIDCR, NIDCD, NIDDK, NIGMS, NIAID, NIEHS, NCCIH

January 29, 2025

NIA, NINR, NIAMS, NCI, NIAAA, NIMH, NCATS, FIC

NIH Women's Health Roundtable Series: Promoting Education and Outreach



ORWH, ODP, NIMH, NICHD, NIA

Future Directions in Menopause Research |
Optimizing Midlife Health of Women
Roundtable

Endometriosis | Beyond the Lesion: Charting
New Paths

Maternal Mental Health Research |
Elevating Women's Voices to Improve
Maternal Mental Health

Over **5,400** participants attended the series

ORWH Launched Key Resources for 2024

National Women's Health Week

NIH National Institutes of Health
Office of Research on Women's Health

2024-2028

**NIH-Wide Strategic Plan
for Research on the
Health of Women**

NATIONAL INSTITUTES OF HEALTH

HEALTH OF WOMEN OF U3 POPULATIONS DATA BOOK 2024

Office of Research on Women's Health

NIH National Institutes of Health
Office of Research on Women's Health

Women of Underrepresented, Underrepresented, and Underreported Populations

NIH FACT SHEETS ON
Women's Health Research

NIH National Institutes of Health
Office of Research on Women's Health

WOMEN'S HEALTH *In Focus* AT NIH
A QUARTERLY PUBLICATION OF THE NIH OFFICE OF RESEARCH ON WOMEN'S HEALTH

National Institutes of Health • Office of the Director | Volume 7, Issue 2, 2024

Women and Mental Health Across the Lifespan

NIH National Institutes of Health
Office of Research on Women's Health

IN THIS ISSUE

- 3 Women's Mental Health Throughout the Life Course
- 14 Too Few Women Are Being Published in Nature, Finds Research by the Publication
- 17 AI Based Deep Learning Models Reveal Behaviorally Relevant Sex Differences in Human Functional Brain Organization

Visit the [subscription page](#) to sign up to receive future issues of *Women's Health In Focus at NIH*.

NIHW NATIONAL WOMEN'S HEALTH WEEK

**FUTURE DIRECTIONS IN MENOPAUSE RESEARCH:
Optimizing Midlife Health of Women Roundtable**

MAY 16, 2024
11:00 a.m. – 12:45 p.m. EDT

NIH National Institutes of Health

Facebook: /NIHORWH
X: @NIH_ORWH
www.nih.gov/women

ANNUAL NIH
VIVIAN W. PINN
SYMPOSIUM

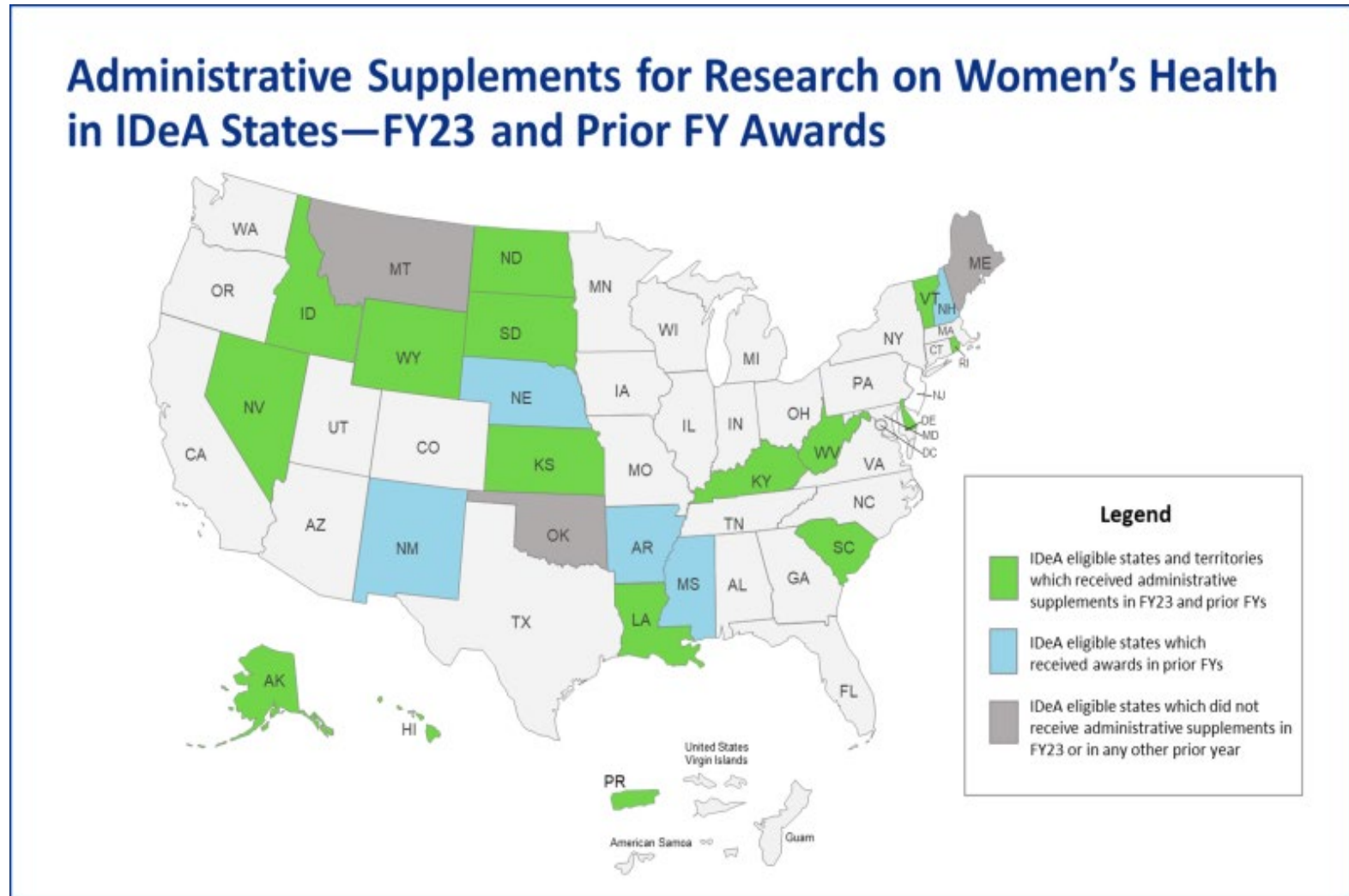
FY2023-24 NIH Advisory Committee on Research on Women's Health Report – In Development



*The full FY2021–FY2022 Biennial Report may be found on the **ORWH website***

Building Women's Health Research Capacity in IDeA States

- Created first IDeA funding opportunities on women's health and health disparities
- With 14 NIH ICOs, NIGMS and ORWH issued (NOT-GM-20-017)
 - ▶ FY20, 15 IDeA states
 - ▶ FY21, 11 IDeA states
 - ▶ **By FY23, 60 grants, \$16.46 M**
- **New- FY24**, 3 COBREs in Louisiana, Idaho, and Kansas
- **To date, 21 IDeA States** have received awards



ORWH and NIGMS Launch the First COBREs Dedicated to Women's Health in IDeA States

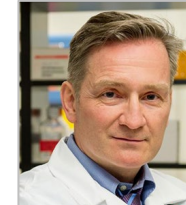
Scientific Output



University of Kansas Lawrence
Leveraging Big Data to Improve Women's Health
Heather R. Desaire, Ph.D.



University of Idaho
Nutrition and Women's Health
Michelle (Shelley) McGuire, , Ph.D.



Tulane University of Louisiana
Sex-Based Precision Medicine
Franck Mauvais-Jarvis, M.D., Ph.D.

1st NIH Symposium on IDeA States Women's Health Research



Pregnancy Complications in The Strong Heart Study, by Emily Harville, Ph.D., LSU Pennington Biomedical Research Center



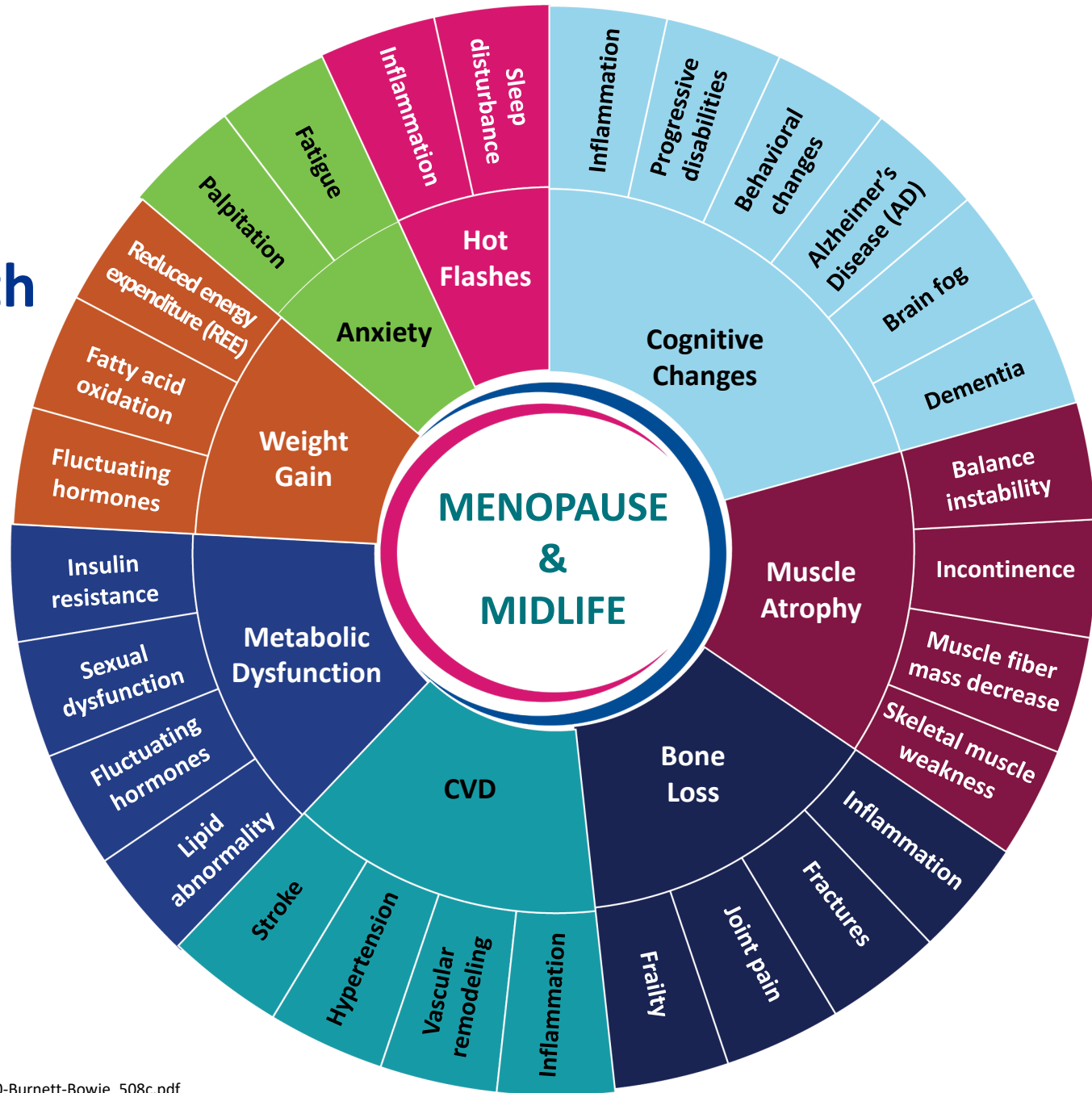
A Need For More Than Tele-Text In Postpartum Hypertensive Women, by Kedra Wallace, Ph.D., University of Mississippi Medical Center



Explore the Symposium
Program Booklet

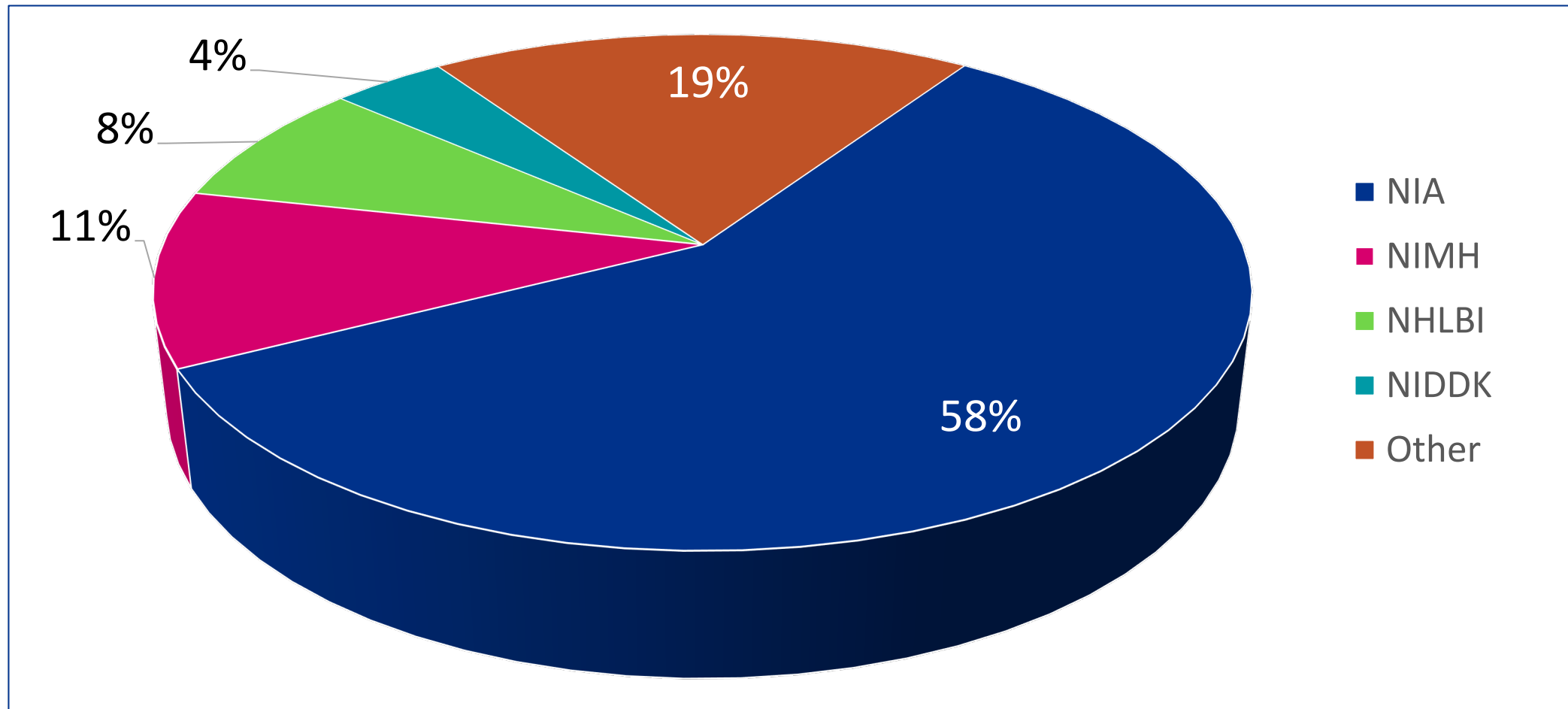


Whole Person Approach- Women's Health Research on Menopause



*Future State -
Where We Are
Going!*

Menopause Research is Supported Across NIH Institutes & Centers



*RCDC Menopause Funding by IC FY23 – Total \$56 Million

ORWH Magnifies Menopause as a Critical Research Area



Capitol Hill Briefing on
Menopause and Midlife Health



National Institute on Aging
National Advisory
Council on Aging

*Briefing Recap- Menopause and Midlife
Women's Health*



Using Artificial Intelligence to
Better Understand
Menopause Workshop

The Menopause Society's
2024 Annual Meeting

 **2 travel awards**

Annina Burns, Ph.D., RD
Health Science Policy Analyst

P2P Workshop on Advancing Menopausal Symptom Management

- **NIH's Office of Disease Prevention** is planning its **first Pathways to Prevention (P2P) workshop** on the **menopausal transition** and to promote **midlife health**, identify research gaps, and develop a roadmap for advancing research.
- Partners include ORWH, NCI, NHLBI, NIA, NICHD, and NIMH.
- The workshop is tentatively scheduled to take place in late 2025.





Focused Attention on Factors Associated with Mental Health Challenges During the Menopause Transition

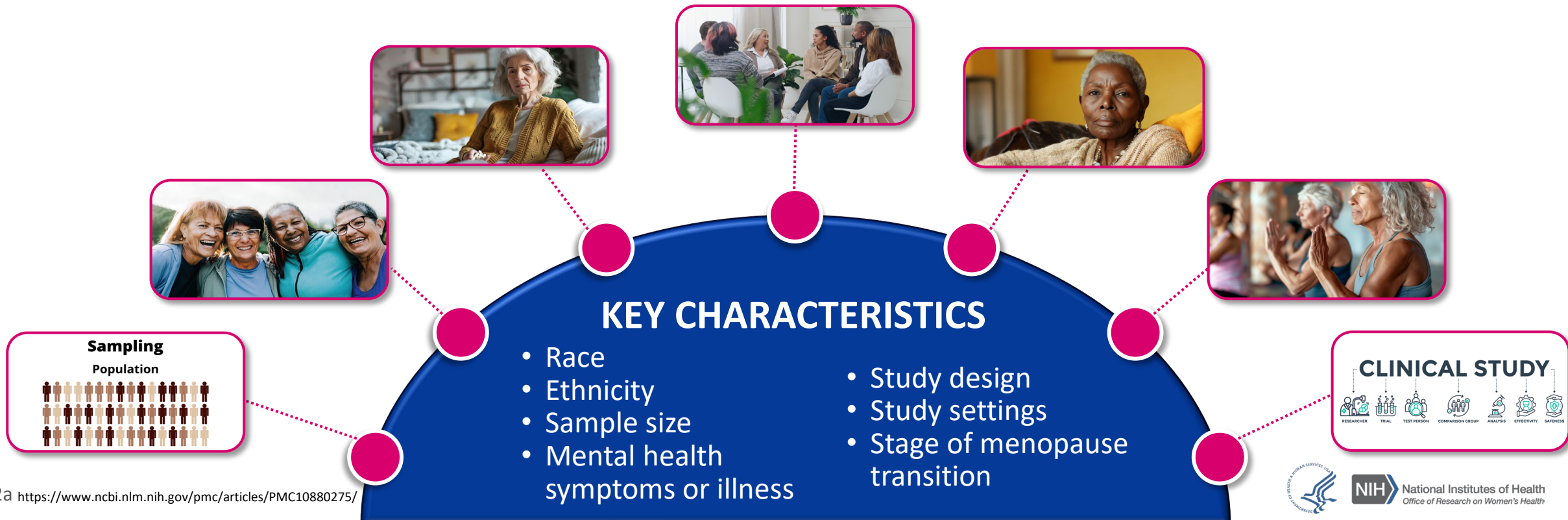
Journal of Women's Health > Vol. 33, No. 2

Research Article | OPEN ACCESS | Published Online: 13 February 2024



Key Findings from Mental Health Research During the Menopause Transition for Racially and Ethnically Minoritized Women Living in the United States: A Scoping Review

Authors: Tamara Lewis Johnson, Laura M. Rowland, Mahela S. Ashraf, Crystal T. Clark, Vonetta M. Dotson, Alicia A. Livinski, and Melissa Simon | [AUTHORS INFO & AFFILIATIONS](#)

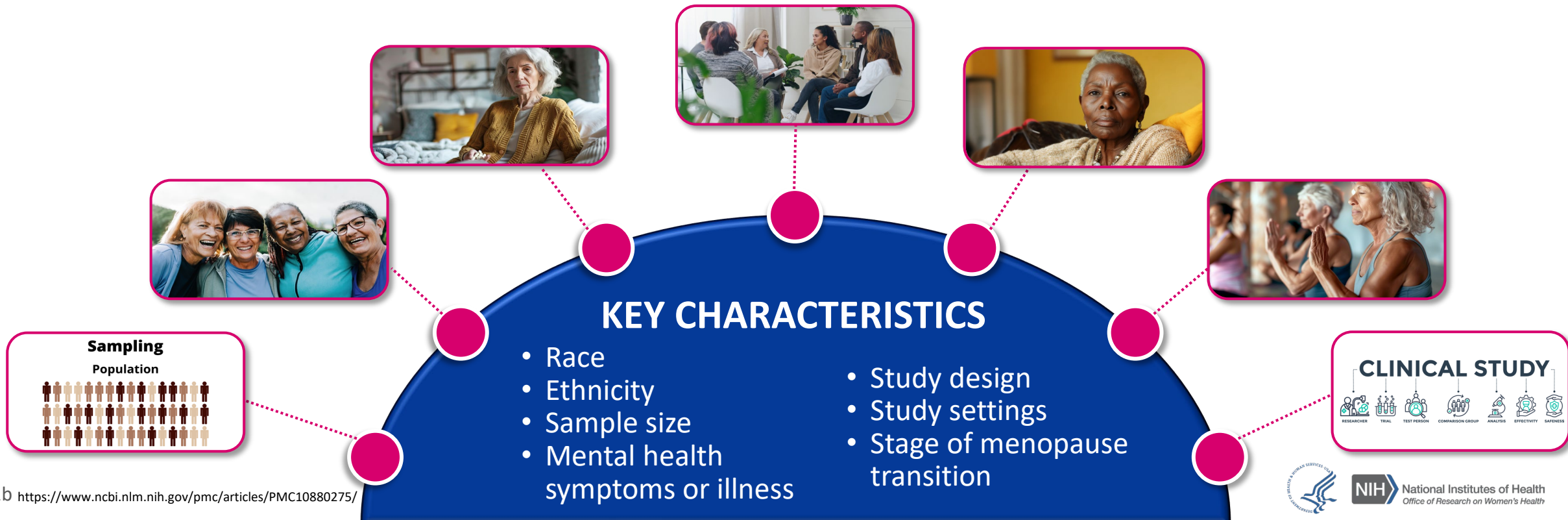




Focused Attention on Factors Associated with Mental Health Challenges During the Menopause Transition

Mood and Psychosis Symptoms during the Menopause Transition (R01 Clinical Trial Optional) PAR-22-035
Expiration date: November 5, 2024

Mood and Psychosis Symptoms during the Menopause Transition (R21 Clinical Trial Optional) PAR-23-102
Expiration date: January 7, 2025



ORWH-Led Chronic Diseases RFAs Fund Menopause Research

Understanding
Chronic Conditions
Understudied Among
Women (R01 and R21)

RFA-OD-23-014
RFA-OD-23-013

National Institute of Mental Health

ORWH

- **Regenerative Biomaterial for Combating Genitourinary Syndrome of Menopause**
- **Changes in Cardiometabolic Tissue Gene Regulation and Omics Profiles With Menopause**

NIMH

- Neuroendocrine Mechanisms Underlying Perimenopausal Risk for Trauma-Related Hyperarousal in Black Women
- Chronobiological Basis of Depression During the Menopause Transition
- Hormonal Drivers of Perimenopausal Inflammation and Mood Symptoms

ORWH Announces Galvanizing Health Equity Through Novel and Diverse Educational Resources (GENDER) R25 Grantees

NLM | NIA | NIAMS | NIDA | NINDS | NINR | NIMHD | OBSSR | OAR | SGMRO



2024



2023



GENDER R25 Supports Educational Activities to Address Diverse Research Needs Across the Country

University of California-Irvine

Advancing *Gender and Health Justice Training*: Developing short courses for public health professionals to advance the intersection of HIV prevention and gender and health justice

Massachusetts General Hospital

***EMPOWHer*:** Implementing a virtual education program to bolster clinicians providing midlife health and menopause care to women with HIV.

University of California, San Francisco

***Queering the Curriculum*:** Creating a curriculum for family medicine residents on transgender, non-binary, and gender diverse (TGD) people across the lifespan.

Loyola University Chicago

***Trans*forming Care*:** Developing a 7-module online curriculum for nursing students on TGD health care standards.

University of Cincinnati

***HIGHER Academy*:** Launching a year-long research course taught by TGGE individuals and cisgender women for interprofessional graduate students.

ORWH Showcases Gender Measurement Grantees

NOSI: Research on Gender Measurement (Admin Supp Clinical Trial Optional) NOT-OD-23-046

- **Objective 2.2:** Develop reliable measures relevant to women's health
- **FY23 Awards:** 8 awards for research on gender terminology (woman, man, nonbinary). Focus on measuring current gender identity using a two-step method.

– Save the Date –
November 3, 2024 – “Research on Gender Measurement” featuring NOSI grantees.

NCI | NIA | NIAID | NICHD | NIDA | NIMHD | NLM | OAR | SGMRO



NIH National Institutes of Health
Office of Research on Women's Health

2024-2028

*NIH-Wide Strategic Plan
for Research on the
Health of Women*

ORWH Sponsors a New Open-Access Supplement on Advancing Health Equity Through Gender Perspectives



The screenshot shows the journal article page for 'Social Science & Medicine'. At the top, it says 'Social Science & Medicine 351 (2024) 116959'. Below that, it says 'Contents lists available at ScienceDirect'. The journal title 'Social Science & Medicine' is prominently displayed, along with the Elsevier logo and the journal homepage URL: 'www.elsevier.com/locate/socscimed'. The article title is 'Gender, power, and health: Modifiable factors and opportunities for intervention[☆]'. The authors listed are Anita Raj^a, Elizabeth Barr^{b,*}, and Derek M. Griffith^c. Below the authors, their affiliations are provided: ^a Newcomb Institute, Tulane University, New Orleans, LA, USA; ^b National Institutes of Health, Office of Research on Women's Health, Bethesda, MD, USA; and ^c Georgetown University School of Health Department of Health Management and Policy, Washington, DC, USA. There are also icons for 'Check for updates' and a circular graphic with various symbols representing health, equity, and research.

- Builds on the “2022 Gender and Health: Impacts of Structural Sexism, Gender Norms, Relational Power Dynamics, and Gender Inequities Scientific Workshop.”
- Brings together established and emerging leaders across diverse fields, including epidemiology, gender studies, men’s health, graphic medicine, demography, clinical medicine, social work, and sociology.
- Provides a multidisciplinary framework to navigate the complex intersections of gender, power, and health research.

ORWH's E-Learning Courses Attract a Diverse Audience and Widespread Participation

2,862 registrants from
11/1/2019 – 7/31/2024

Learners reported affiliations
with institutions in **69** countries



789 Bench to Bedside
Immunology

544 SABV and the Health
of Women and Men

80% of learners describe
themselves as female

NIH Office of Research on Women's Health (ORWH)

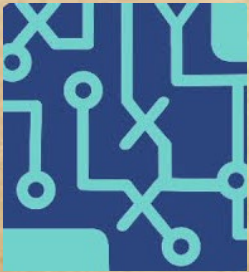


Careers



Specialized Centers of Research Excellence on Sex Differences

SCORE on Sex Differences 2024 Annual Meeting



Victor J. Dzau, M.D.

Keynote Speaker

President, National Academy Medicine (NAM)

Vice Chair, National Research Council

Chancellor Emeritus of Duke University



Carolyn M. Mazure, Ph.D.

Capstone Speaker

Chair, The White House Initiative on Women's Health Research

Norma Weinberg Spungen and Joan Lebson Bildner Professor in Women's Health Research

Professor of Psychiatry and Psychology

Director, Women's Health Research at Yale

Yale University School of Medicine

Building Interdisciplinary Research Careers in Women's Health



Abbey Berenson, M.D., MMS, Ph.D.

Ruth L. Kirschstein Memorial Lectureship

Keynote Lecture Speaker

Director, UTMB Center for Interdisciplinary Research in Women's Health
Director, Division of Population and Preventive Health, Department of Ob/Gyn
Garland D. Anderson MD Distinguished University Chair in Obstetrics and Gynecology
Professor, Departments of Obstetrics/Gynecology and Pediatrics
Professor, Graduate School of Biomedical Sciences
Adjunct Professor, Department of Epidemiology, School of Public Health
The University of Texas Medical Branch
Adjunct Professor, MD Anderson Cancer Center



Nina F. Schor, M.D., Ph.D.

Legacy of Leadership Lecture Speaker

NIH Deputy Director for Intramural Research
Former Deputy Director of National Institute of Neurological Disorders
and Stroke

Photo credit: <https://orwh.od.nih.gov/about/newsroom/events/2024-building-interdisciplinary-research-careers-in-womens-health-bircwh-annual-meeting>



ORWH Partners with NIDKK to Award Advancing Gender Inclusive Excellence (AGIE) Coordinating Center

- The AGIE Coordinating Center will:
 - ▶ Develop a research strategy, and lead and manage the overall program
 - ▶ Serve as a centralized resource hub to collect, store, and disseminate resources and results
 - ▶ Develop and implement a communication and dissemination plan
 - ▶ Administer and manage a Pilot and Feasibility Studies program supporting feasibility or pilot awards to investigate programs addressing systemic gender-based inequities



VCU

VIRGINIA COMMONWEALTH UNIVERSITY

Save the Date

– RECENT –

October 1, 2024
8:30 AM – 1:00 PM EDT

**The Intersection of Regenerative
Medicine and Women’s Health: A Workshop**

– UPCOMING –

October 30, 2024
11:00 AM – 1:00 PM EDT

**Small Business Opportunities for
Innovative Women’s Health Research**

November 8, 2024
12:00 PM – 12:45 PM EST

Updates on OADR-ORWH Session 5

December 5, 2024
12:00 PM – 2:00 PM EST

OADR-ORWH ScienceTALKS

“The Cancer Autoimmune Connection: Decoding the Paradox”

CONNECT WITH US

eLearning



Bench to Bedside: Integrating Sex and Gender to Improve Human Health

Free
CMEs
available



Sex as a Biological Variable (SABV): A Primer



SABV Primer: Train the Trainer



Introduction to Sex and Gender: Core Concepts for Health-Related Research

► [bit.ly/ORWHeLearning*](https://bit.ly/ORWHeLearning)

Monthly e-mail

NIH National Institutes of Health
Office of Research on Women's Health

The Pulse

► [bit.ly/ORWHpulse*](https://bit.ly/ORWHpulse)

Events

UPCOMING
EVENTS

► [bit.ly/ORWHevents*](https://bit.ly/ORWHevents)

Newsletters

WOMEN'S HEALTH *In Focus* AT NIH
A QUARTERLY PUBLICATION OF THE NIH OFFICE OF RESEARCH ON WOMEN'S HEALTH

National Institutes of Health • Office of the Director | Volume 7, Issue 3, 2024



IN THIS ISSUE

- 3 Sex and Gender Differences and Infectious Disease
- 10 An Interview with NIAID Director Dr. Jeanne Marrazzo
- 12 First State-Mandated Endometriosis Biorepository Launches in Connecticut

Visit the [subscription page](#) to sign up to receive future issues of *Women's Health in Focus at NIH*.

► [bit.ly/ORWHInFocus*](https://bit.ly/ORWHInFocus)

Social Media

f /NIHORWH

X @JanineClaytonMD

X @NIH_ORWH

www.nih.gov/women

#ResearchForWomen

