



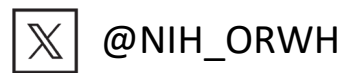
NIH Office of Research on Women's Health (ORWH)

60th Meeting of the NIH Advisory Committee on Research on Women's Health

Janine Austin Clayton, M.D., FARVO

NIH Associate Director for Research on Women's Health
Director, Office of Research on Women's Health
National Institutes of Health

April 9, 2024 – Director's Report



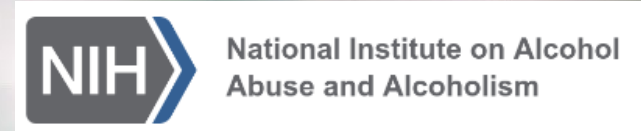
#ResearchForWomen

Outline

- I. Opening remarks
 - II. ORWH and NIH update
 - III. Policy & Scientific updates
 - IV. Careers
 - V. Closing
-

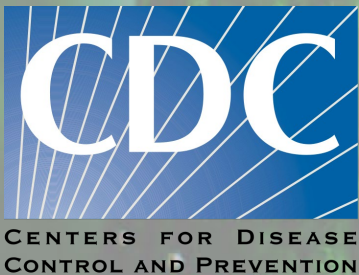
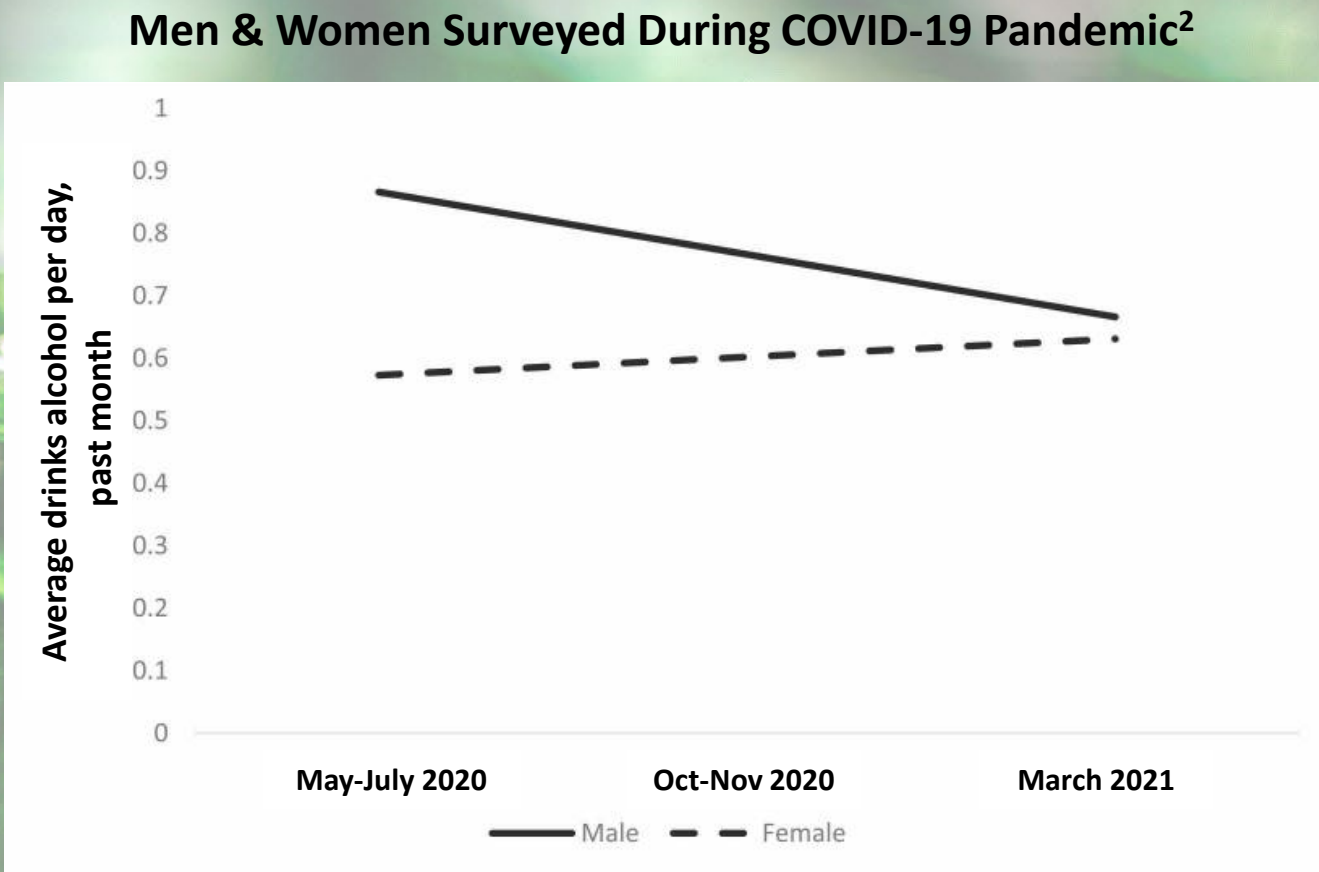


Women Experience Greater Increases in Alcohol Use Problems than Men for Over 20 Years



Pre COVID-19 Pandemic: 2003-2018¹
 Alcohol-involved suicide increased significantly for **all women aged 18 and older**
 Alcohol-involved suicide increased significantly for **only men aged 35-64**

Deaths Excessive Alcohol Use	2016-2017	2020-2021	% Increase
Females	43,565	58,701	34.7%
Males	94,362	119,606	26.8%



¹Lange, S., et al. 2022. *Addiction*. DOI: 10.1111/add.15905

²Tucker, J.S., et al. 2022. *Drug Alcohol Depend*. DOI: 10.1016/j.drugalcdep.2022.109285

³CDC: https://www.cdc.gov/mmwr/volumes/73/wr/mm7308a1.htm?s_cid=mm7308a1_w

II.

ORWH and NIH Update



II.

ORWH Update



Victoria Shanmugam, MBBS, MCRP, FACR, CCD
Director, NIH Office of Autoimmune Disease Research in the
Office of Research on Women's Health



Elizabeth Barr, Ph.D., M.S.
Associate Director, Interdisciplinary Research Section

<https://orwh.od.nih.gov/about/staff>



2

Tara Schwetz, Ph.D.

Deputy Director, Program Coordination, Planning, and Strategic Initiatives



3

W. Kimryn Rathmell, M.D., Ph.D.

Director, National Cancer Institute



4

Kathleen M. Neuzil, M.D.

Director, Fogarty International Center
Associate Director for International Research



5

Shelli Avenevoli, Ph.D.

Acting Director, National Institute of Mental Health

13

Number of women
IC directors



1

Monica Bertagnolli, M.D.
NIH Director



¹Photo credit: <https://www.nih.gov/about-nih/who-we-are/nih-director/statements/appointment-dr-monica-bertagnolli-director-national-cancer-institute>
²Photo credit: <https://www.nih.gov/about-nih/who-we-are/nih-director/statements/dr-tara-schwetz-named-nih-deputy-director-program-coordination-planning-strategic-initiatives>
³Photo credit: <https://www.nih.gov/about-nih/who-we-are/nih-director/statements/intent-appoint-dr-w-kimryn-rathmell-director-national-cancer-institute>
⁴Photo credit: <https://www.nih.gov/news-events/news-releases/nih-selects-dr-kathleen-neuzil-director-fogarty-international-center-nih-associate-director-international-research>
⁵Photo credit: <https://www.nimh.nih.gov/about/organization/od/about-nimh-deputy-director-shelli-avenevoli-phd>



6

Diana Finzi, Ph.D.

Acting Associate Director, Office of AIDS Research



7

Stefan M. Pasiakos, Ph.D., FACSM

Director, Office of Dietary Supplements



8

Andrew A. Bremer, M.D., Ph.D., M.A.S., F.A.A.P.

Director, Office of Nutrition Research



9

Lyric Jorgenson, Ph.D.

Associate Director for Science Policy and
Director of the Office of Science Policy

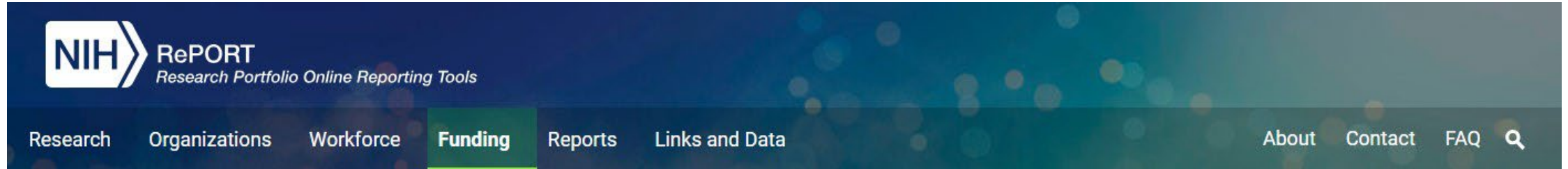
⁶Photo credit: <https://www.oar.nih.gov/about/directors-corner/directors-biography>

⁷Photo credit: <https://ods.od.nih.gov/About/newdirector.aspx>

⁸Photo credit: <https://dpcpsi.nih.gov/onr/staff/Andrew-Bremer>

⁹Photo credit: <https://osp.od.nih.gov/about-us/leadership/lyric-jorgenson/>

RCDC Adds NEW Category - Menopause



<https://report.nih.gov/funding/categorical-spending/rcdc-process>

1. Biodefense and Medical Countermeasures
2. Fentanyl Misuse and Addiction
3. Harm Reduction for Substance Misuse
- 4. Menopause**
5. Natural Products
6. Primary Health Care
7. Recovery Support Services
8. Health Disparities and Racial or Ethnic Minority Health Research
9. Health Disparities Research
10. Racial and Ethnic Minority Health Research
11. Workforce Diversity and Outreach
12. Building Research Capacity (at Resource Limited Institutions)

NIH Community Partnerships to Advance Society (ComPASS)



National Institutes of Health

Office of Strategic Coordination – The Common Fund

Community Partnerships to Advance Science for Society (ComPASS)

To advance the science of health disparities and health equity research, the NIH Common Fund launched the ComPASS Program.

The goals of ComPASS are to:

- 1. To catalyze, deploy, and evaluate **community-led health equity structural interventions** that leverage partnerships across multiple sectors to reduce health disparities
- 2. To develop a **new health equity research model** for community-led, multisectoral structural intervention research across NIH and other federal agencies

Program duration: 10 years

Planned budget: Approximately \$200M in the first five years

ComPASS has three initiatives:



CHESI Awards: Structural Factors



Partnership to Optimize Women's Equity in Maternal and Infant Health

- **Project Leader:** Karen Comer Matthews
- **Organization:** Delta Health Alliance, Inc.
- **Structural Factors:** Access to quality healthcare, economic stability
- **Research Partner:** Wesley James & Jonathan Bennett, University of Memphis
- **Intervention Location:** Mississippi
- **Description:** This project will research ways to address Mississippi's birth and maternal health disparities by providing information and care for participants from pre-pregnancy to post-partum in rural and low-income areas. Training will also be provided to clinicians to better tailor their recommendations to fit the needs of these patients. Additionally, this program seeks to address economic stability by implementing a maternal leave stipend.



Community Health Care
Access and Quality

Humanitarian Health Care Network: Bringing the Most Vulnerable to Care

- **Project Leaders:** Deliana Garcia (contact); Anibal Yariel Lopez-Correa and Lazslo Madaras
- **Organization:** Migrant Clinicians Network, Inc.
- **Structural Factors:** Health care access and quality of care
- **Research Partner:** Lazslo Madaras, Migrant Clinicians Network
- **Intervention Location:** Southern Texas
- **Description:** This project will test ways to provide medical care for high-risk children and late term pregnancy mothers along the southern border of Texas by connecting them to a system of medical case management composed of a team of case managers, physicians, culturally proficient patient navigators and other specialists.



Community Health Care
Access and Quality

Puerto Rico Collaborative Advancement of Research, Innovations, Best Practices and Equity for Children, Youth and Families (PR-CARIBE)

- **Project Leaders:** Marizaida Sanchez (contact), Christina Adames and Eric Rivera
- **Organization:** Grupo Nexos, Inc.
- **Structural Factors:** Justice system, health care system/access to primary care, mental health access, early childhood development and education, and economic/community development.
- **Research Partner:** Edna Acosta-Pérez, University of Puerto Rico
- **Intervention Location:** Puerto Rico (Southwest regions)
- **Description:** This project will research approaches to reduce health disparities by fighting childhood poverty in Puerto Rico. This multi-level initiative seeks to address socioeconomic factors by enhancing mental health access and educational development at the organizational, community, and government/institutional levels to reduce health disparities associated with mental health and other quality of life measures.



Community Health Care
Access and Quality



Economic Development



Social and Cultural
Context

III.

Policy & Scientific Updates



**November 13, 2023: President Joe Biden and First Lady Jill Biden
Announce First-Ever White House Initiative on Women's Health Research**



Executive Order to Advance Women's Health Research & Innovation Key Points

- ❖ Prioritize Investments in Women's Health Research
- ❖ Integrate Women's Health Across the Federal Research Portfolio
- ❖ Galvanize New Research on Women's Midlife Health
- ❖ Assess Unmet Needs to Support Women's Health Research

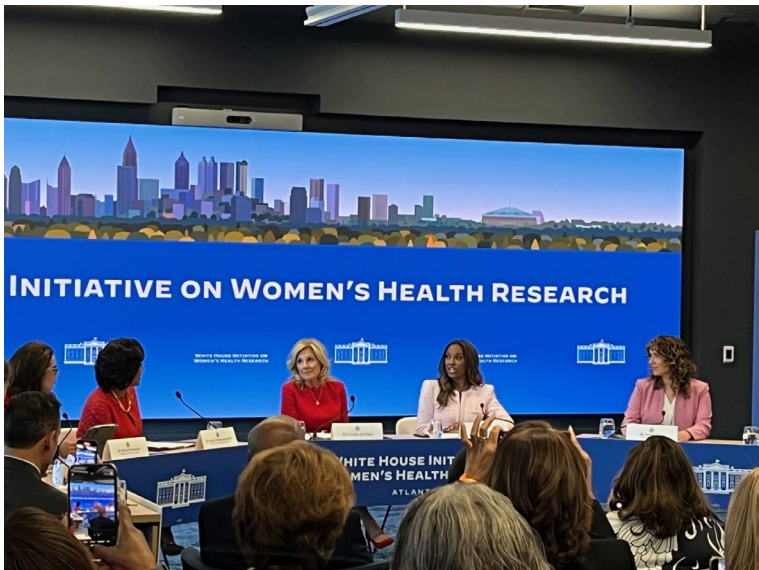
<https://www.whitehouse.gov/briefing-room/statements-releases/2024/03/18/fact-sheet-president-biden-issues-executive-order-and-announces-new-actions-to-advance-womens-health-research-and-innovation/#:~:text=The%20Executive%20Order%20also%20directs,to%20Support%20Women's%20Health%20Research>



February 2024: First Lady Biden Visits Morehouse School of Medicine

“We have a clear goal: to fundamentally change how our nation approaches and funds women’s health research. There are big gaps in research on diseases and conditions that only affect women, that disproportionately affect women, or that affect women and men differently.”

First Lady Dr. Jill Biden



Morehouse Women’s Heart Healthy Luncheon



**Dr. Valerie Montgomery Rice, MD, FACOG
President & CEO
Morehouse School of Medicine**

¹Photo credit: <https://www.courthousenews.com/first-lady-spotlights-womens-health-research-in-atlanta/>

²Photo credit: <https://www.ajc.com/news/health-news/first-lady-jill-biden-in-atlanta-to-boost-womens-health-research/SQAOGKDF2JGHXPMMRVQYUOIJ7E/>



First Lady Biden Visits North Carolina Research Triangle to Disseminate Executive Order



1

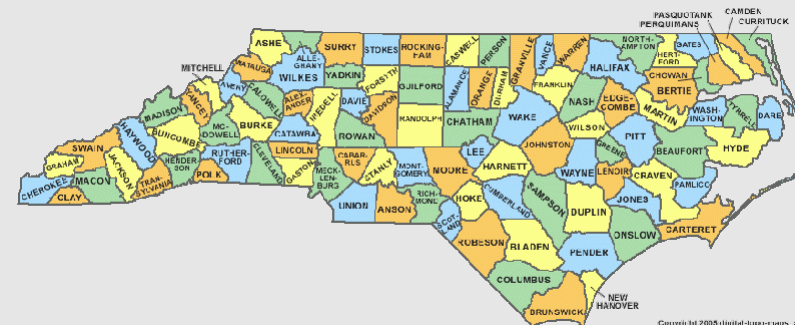


2

7th Annual Vivian Pinn Symposium Speaker

Genevieve Neal-Perry, M.D., Ph.D. University of North Carolina at Chapel Hill

“So many of us and so many of the women in our lives suffer from health conditions for which we simply don't have the answers or solutions.”
— First Lady Biden



Copyright © 2005 Digital-Map.com

¹Photo credit: https://www.linkedin.com/posts/research-triangle-park_femtech-agtech-lifesciences-activity-7179476989358043139-l_4m?utm_source=share&utm_medium=member_ios

²Photo credit: <https://www.med.unc.edu/obgyn/people/genevieve-neal-perry/>



NEW: Notice of Special Interest Women's Health Research (NOT-OD-24-079)

First available due date: May 6, 2024
Expiration date: November 5, 2027



Participating ICOs:

**ORWH, OAR, NEI, NHLBI, NHGRI, NIA, NIAAA,
NIAID, NIAMS, NIBIB, NICHD, NIDCD, NIDCR,
NIDDK, NIDA, NIEHS, NIGMS, NIMH, NINDS,
NINR, NIMHD, NLM, FIC, NCCIH, NCATS, NCI,
ODP, OBSSR, ODS, SGMRO, ODSS**

In alignment with the White House Initiative on Women's Health Research, NIH is issuing this NOSI to highlight interest in receiving research applications focused on diseases and health conditions that:

- ❖ Predominantly affect women (e.g., autoimmune diseases; depressive disorders, Alzheimer's disease and Alzheimer's disease-related dementias, gender-based-violence)
- ❖ Present and progress differently in women (e.g., cardiovascular disease; HIV; reproductive aging and its implications)
- ❖ Are female-specific (e.g., uterine fibroids; endometriosis; menopause)



ORWH Contributes a Sex and Gender Perspective to Critical Health Issues and Policy

March 03, 2023

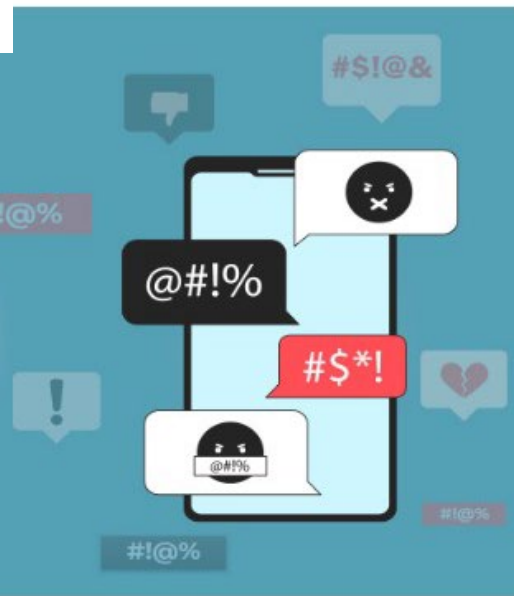
EXECUTIVE SUMMARY: Initial Blueprint for the White House Task Force to Address Online Harassment and Abuse

Understanding and Addressing the Health Impacts of Online Abuse and Harassment Workshop

VIRTUAL EVENT
December 7–8, 2023

O N L I N E
A B U S E

NIH National Institutes of Health
Office of Behavioral and Social Sciences Research



Day 1 Videocast Link: <https://videocast.nih.gov/watch=52604>

Day 2 Videocast Link: <https://videocast.nih.gov/watch=52606>

The New York Times

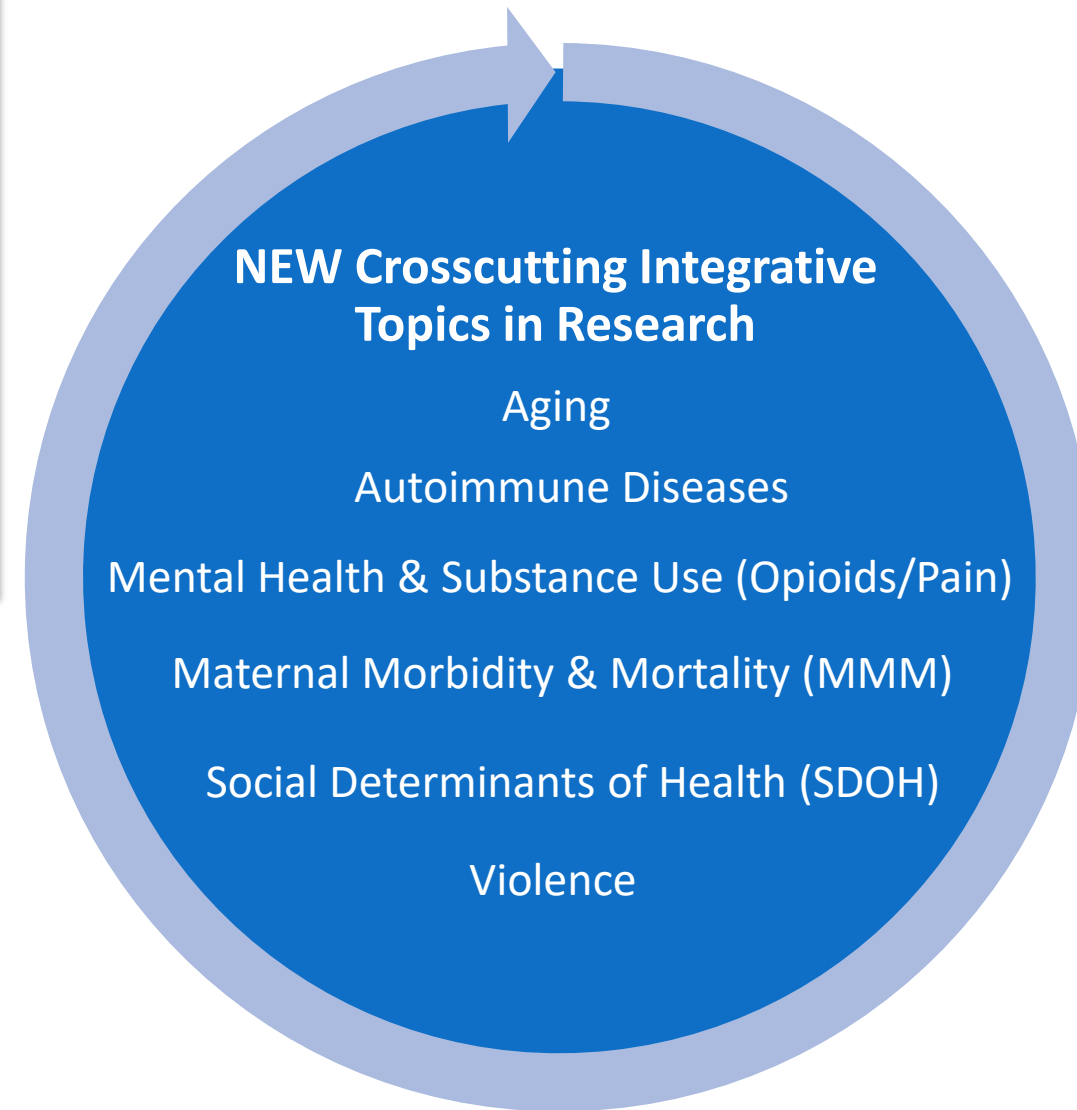
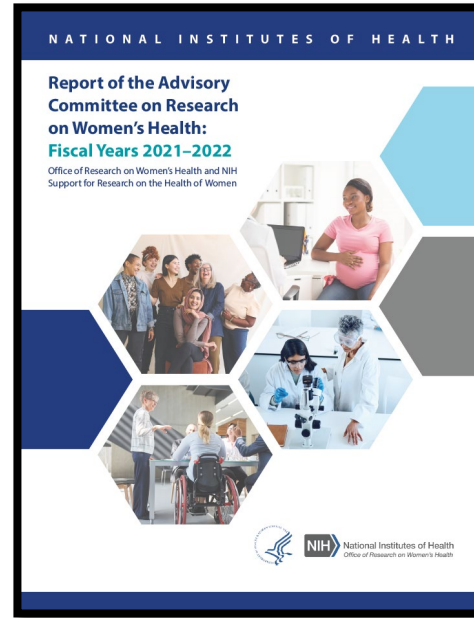
Dec 21, 2023

PEW RESEARCH RESULTS...

- **4 in 10 adult Americans** experienced online harassment. Growing number face severe online abuse, like sexual harassment.
- Online harassment **disproportionately** affects women and girls
- 54% of girls ages 15 to 17 have experienced **at least one** of the six cyberbullying behavior

NEW

Report of the Advisory Committee on Research on Women's Health: Fiscal Years 2021-2022



-  Women's Health Research conducted by ICO's
-  Inclusion of Women & Minorities in Clinical Research
-  Careers & Workforce Demographics

The Innovation Equity Forum is a partnership of >250 members from diverse backgrounds with the goal to advance women's health R&D

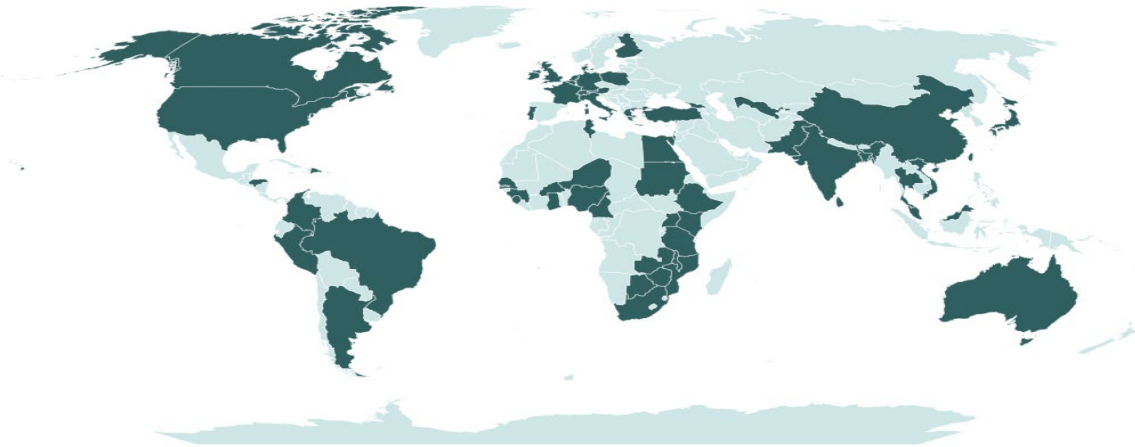
AIM

The Forum comprises a broad range of **multidisciplinary** expertise from **various levels and sectors** of the biomedical enterprise to provide **diverse* viewpoints**.

An **inclusive, globally-focused, and widely accepted** Opportunity Map to advance Women's Health R&D

IMPACT

50+ countries of origin represented



IEF members also represented multiple sectors, ages, and genders –

- **13 sectors represented** - from academia/research (~20%) to professional organizations (~1%)
- **Broad age range represented** - with 10% of participants below 35 and ~45% between 35 and 50 years old
- **Multiple genders represented** – with ~85% of participants identifying as women

Affected population

Women (including female assigned at birth, transgender, and non-binary people), across their lifespan, worldwide, across different demographics including race /ethnicity, age / generation, and socioeconomic status (SES) /caste

Integrated **across all organ systems** and across the **full life course**, including understanding diseases/conditions:

Only
in Women

Mostly
in Women

Differently
in Women

Understudied
in Women

By investing in unmet needs, the goal is to accelerate innovation for women's health and ultimately reduce morbidity and mortality; and increase the wellbeing of women



Women's Health Innovation Opportunity Map 2023

50 High-Return Opportunities to Advance Global Women's Health R&D

A report of the **Innovation Equity Forum**, sponsored by the Bill & Melinda Gates Foundation and US National Institutes of Health



<https://bit.ly/3PEcl20>

Co-chaired by the Bill & Melinda Gates Foundation and the National Institutes of Health

The Opportunity Map lays out 50 equitable, high-return opportunities to advance global innovation for women's health



By prioritizing resources and efforts along five criteria...

Potential for impact	Readiness	Innovation	Matters to women	Equity
----------------------	-----------	------------	------------------	--------

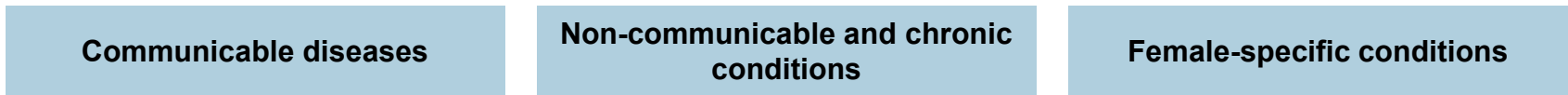
...With four lenses in mind...

Serving the underserved	Sex and gender influences	Life course perspective	Quality of life and well-being
-------------------------	---------------------------	-------------------------	--------------------------------

...We can advance opportunities to lay stronger foundations for equitable innovation...



...To benefit women across the spectrum of conditions that affect them uniquely, differently, or disproportionately...



⚙️ ...Powered by global collaboration, knowledge sharing, and mutual commitment. ⚙️

Partnerships for Women's Health R&D

»»» The Women's Health Innovation Opportunity Map: *Research Design and Methodology*

4 Cross-Cutting Opportunities



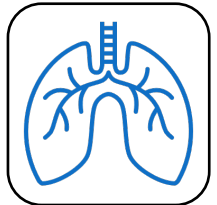
Advance sex- and gender-intentional R&D and analysis in all research stages



Promote knowledge- and resource-sharing on preclinical & clinical research landscape in under-resourced settings



Strengthen use of computations & bioinformatics modeling, machine learning & deep learning approaches



Support *in-vitro* translational model development, like organoids & organ-on-a-chip systems

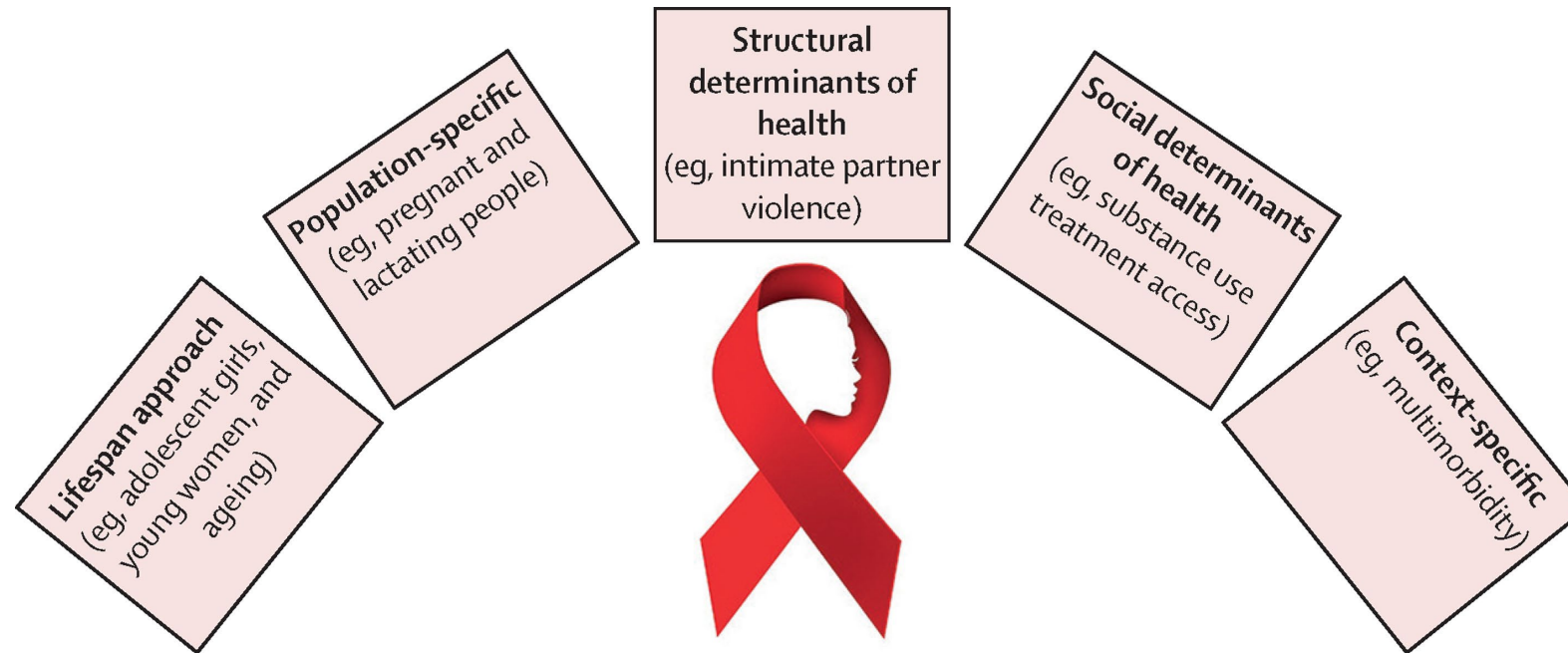
Key Stakeholders

Communities and

Publishing the Opportunity Map marks the first step to gather **stakeholders in the R&D ecosystem and coalesce around impactful investments** and important steps and opportunities needed to **improve women's health.**

Setting Agencies

The Lancet HIV Highlights HIV and Women Signature Program at NIH



An intersectional, equity-informed, data-driven approach to HIV, women, and gender diverse people

Position paper published February 2024 outlines a framework for an intersectional, equity-informed, data-driven approach to research on HIV and women

Barr E, Marshall LJ, Collins LF, et al. *Lancet HIV*. 2024

NIH HIV & Women Scientific Workshop: Centering the Health of Women in HIV Research

Objectives

- Foster interdisciplinary, intersectional, community-centered knowledge exchange on topics of relevance to HIV and cisgender and transgender women, girls, and gender-diverse people
- Review the state of the science in HIV and women, with attention to prevention, treatment, cure, and social and structural determinants of health
- Highlight modifiable factors, interventions, methods, and challenges to advance health equity for women with, or affected by, HIV
- Identify opportunities to advance health research and foster interdisciplinary collaborations on HIV and women





Updates: NIH Office of Autoimmune Disease Research (OADR-ORWH)



FY 2023 OADR-ORWH Co-Funding Summary:

Funded **41** applications from **12** ICOs

15 extramural co-funding awards

3 R56 Bridge funding awards

2 Accelerating Medicines Partnership Autoimmune and Immune-Mediated Diseases awards

10 intramural co-funding awards

5 intramural scientific fellowships

6 Exposome in Autoimmune Disease Collaborating Teams Planning (EXACT-PLAN) award

Request for Information
Inviting Input on an NIH-Wide Strategic Plan for Autoimmune Disease Research

Events

February 2

Community Roundtable

February 23

Academic Roundtable

April 23

OADR-ORWH Science Talks

May 3

Updates on OADR-ORWH Session 3



Meet the 2023 EXACT-PLAN Award Recipients



John Pearce
Ph.D.



Jill Norris
Ph.D., M.P.H.



Marc Natter
M.D.



Jane Buckner
M.D.



Wilson Laio
M.D.



Brigitte Frohnert
M.D., Ph.D.

Notice of Special Interest (NOT-OD-23-112)

EXposome in Autoimmune Disease Collaborating Teams PLANning (EXACT-PLAN) Awards

The EXACT Network, which is a national research collaborative team, conducts research to discover the environmental exposures that influence disease susceptibility, onset, and outcomes and will develop a systems-level approach to understand the mechanisms underlying how exposures perturb cellular, organ, and tissue function across autoimmune diseases.



<https://orwh.od.nih.gov/in-the-spotlight/all-articles/meet-2023-exact-plan-award-recipients>

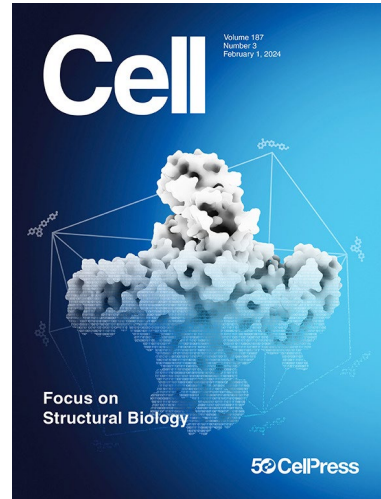
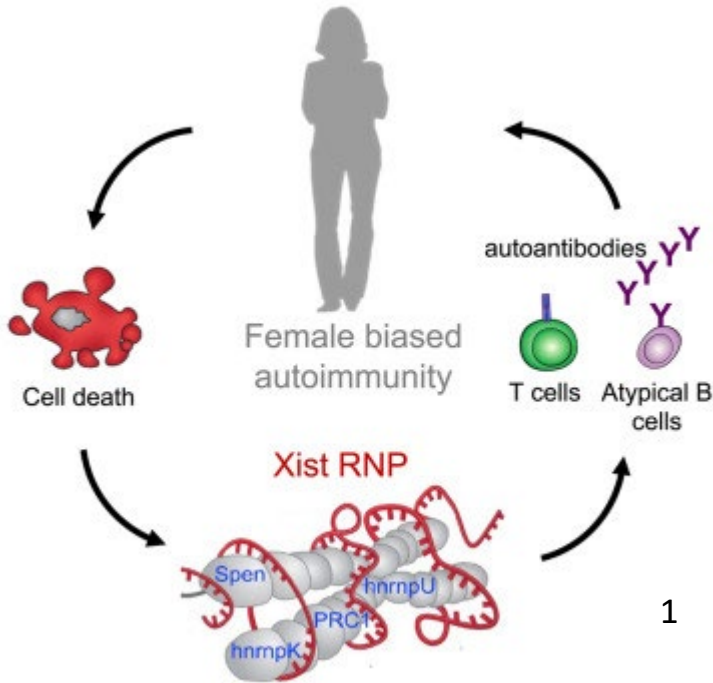
<https://grants.nih.gov/grants/guide/notice-files/NOT-OD-23-112.html>



Xist RNA Protein Helps Explain Why More Females Suffer from Lupus & Rheumatoid Arthritis



March 2024:
International
Association of Dental
Research 2024 General
Session Presentation



2

The Washington Post

**Scientists Found a Major
Clue Why 4 of 5
Autoimmune Patients Are
Women**

**Xist RNA protein complex is
immunogenic & may underlie
female-biased autoimmunity**

**Study Offers
New Clues to
Why Most
People with
Autoimmune
Diseases Are
Women**

NIH Director
**Dr. Monica M.
Bertagnoli**

Credit:
Donny
Bliss/NIH

<https://directorsblog.nih.gov/tag/xist/>

¹ [https://www.cell.com/cell/fulltext/S0092-8674\(24\)00002-3](https://www.cell.com/cell/fulltext/S0092-8674(24)00002-3)

² Photo credit: [https://www.cell.com/issue/S0092-8674\(23\)X0004-X#closeFullCover](https://www.cell.com/issue/S0092-8674(23)X0004-X#closeFullCover)

Dou, D. R., et al. 2024. *Cell*. DOI: 10.1016/j.cell.2023.12.037

<https://www.washingtonpost.com/science/2024/02/01/why-women-have-more-autoimmune-diseases/>





Framework for the Consideration for Chronic Debilitating Conditions in Women

Report:

- i. Release Date: Summer 2024 (expected)
 - <https://www.nationalacademies.org/our-work/framework-for-the-consideration-of-chronic-debilitating-conditions-in-women>

Caregiving Report Public Release Launch: Policies and Practices for Supporting Family Caregivers Working in Science, Engineering, and Medicine

- i. Release Date: April 11, 2024
 - https://www.nationalacademies.org/event/42333_04-2024_caregiving-report-public-release-launch-policies-and-practices-for-supporting-family-caregivers-working-in-science-engineering-and-medicine

Action Collaborative on Preventing Sexual Harassment in Higher Education

Notice of Special Interest (NOT-OD-21-150)

- i. Indiana University-Purdue University At Indianapolis
 - Indiana CARES (Creating Accountability and Building Relationships to Eradicate Sexual Harassment)
- ii. Stanford University
 - Sexual harassment Training Of Principal investigators (STOP)

Action Collaborative on Transforming Trajectories for Women of Color in Tech

- i. The Action Collaborative brings institutions and organizations together to work toward targeted, collective action, guided by an intersectional approach.
 - <https://www.nationalacademies.org/our-work/action-collaborative-on-transforming-trajectories-for-women-of-color-in-tech#sl-three-columns-a927592f-e44e-42c2-ac32-20e3454d85cb>



Pathways to Prevention (P2P) Program: Identifying Risks and Interventions to Optimize Postpartum Health



Independent Panel Report: Maternal Mortality-
A National Institutes of Health Pathways to
Prevention Panel Report



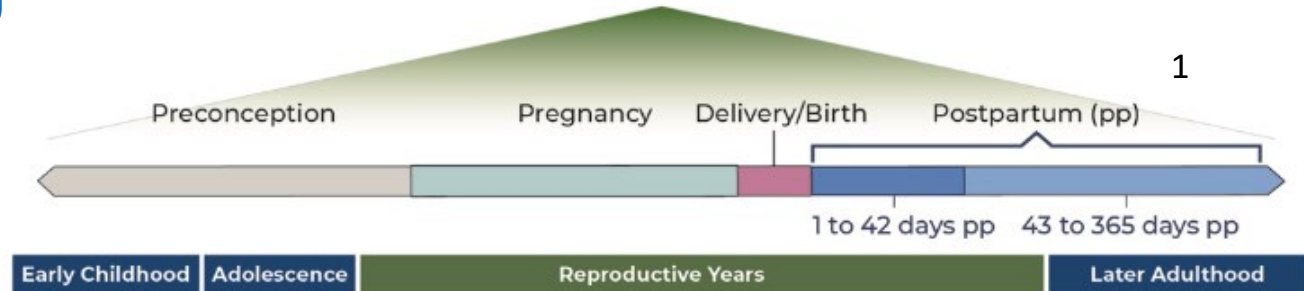
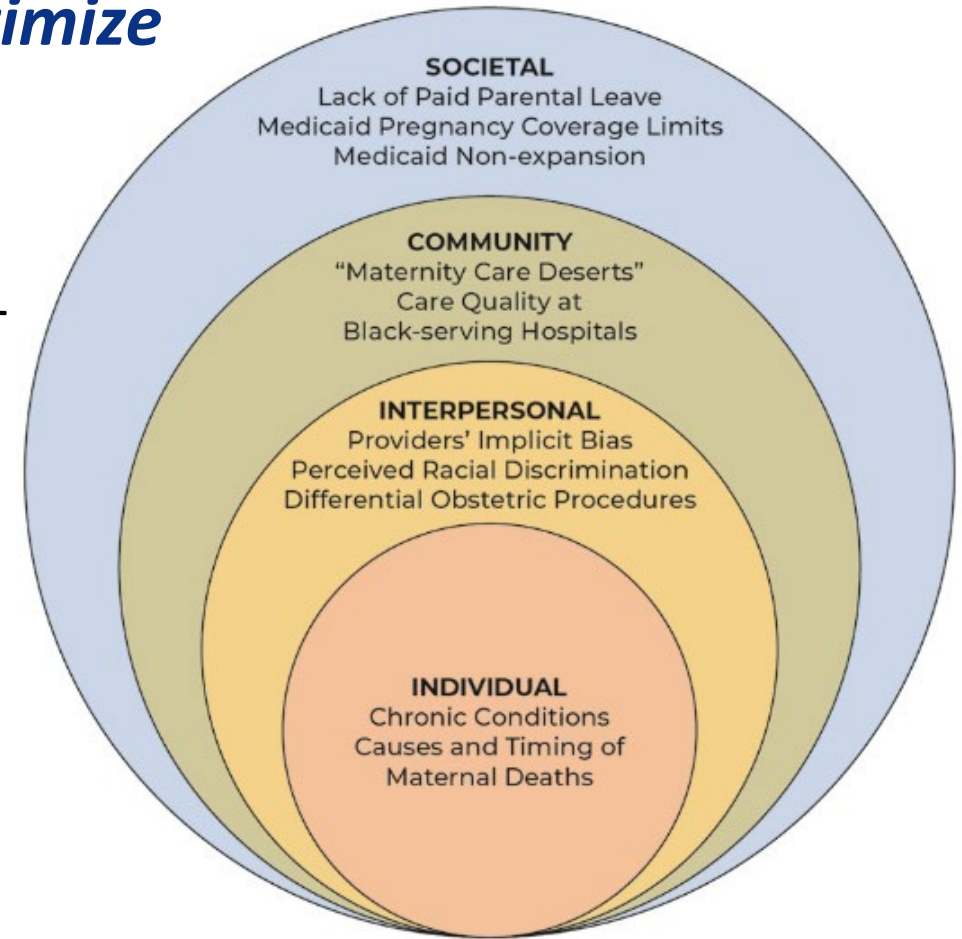
Independent Panel Summary



Systematic Evidence Review: An Evidence Map
for Social and Structural Determinants for
Maternal Morbidity and Mortality

Federal Partners Report Released April 2

<https://prevention.nih.gov/sites/default/files/2024-04/P2P-PostpartumFPMReport-FINAL.pdf>



¹<https://prevention.nih.gov/research-priorities/research-needs-and-gaps/pathways-prevention/identifying-risks-and-interventions-optimize-postpartum-health>
https://journals.lww.com/greenjournal/fulltext/2024/03000/maternal_mortality__a_national_institutes_of.25.aspx
<https://prevention.nih.gov/sites/default/files/2023-12/P2P-PostpartumHealth-PanelSummary-FINAL-508.pdf>
https://journals.lww.com/greenjournal/fulltext/2024/03000/an_evidence_map_for_social_and_structural.10.aspx

Office of Disease Prevention Pathways to Prevention Workshop: Management of Menopausal Symptoms

Menopause is a normal phase of life, but the experience is different for everyone. More research is needed to help women and their health care providers navigate the menopausal transition and promote well-being through midlife and beyond.

Menopause was selected as the next P2P Program and represents the next step toward identifying gaps in menopause research.



7th Annual Vivian
Pinn Symposium:
*Menopause and
Optimizing Midlife
Health of Women*

Sponsoring ICOs

- Office of Disease Prevention
- Office of Research on Women's Health
- National Cancer Institute
- National Heart, Lung, and Blood Institute
- National Institute on Aging
- *Eunice Kennedy Shriver* National Institute of Child Health and Human Development
- National Institute of Mental Health



»» Today's Special Panel: Middle-Life Health of Women & Menopause



Chhanda Dutta, Ph.D.

Chief, Clinical Gerontology Branch, Division of Geriatrics and Clinical Gerontology, National Institute on Aging, NIH



Roberta Diaz Brinton, Ph.D.

Director, Center for Innovation in Brain Science, University of Arizona Health Sciences



Sherri-Ann Burnett-Bowie, M.D., M.P.H.

Associate Professor of Medicine, Harvard Medical School



Howard Neil Hodis, M.D.

Harry J. Bauer and Dorothy Bauer Rawlins
Professor of Cardiology, Population and Public Health Sciences, and Molecular Pharmacology and Toxicology, Director of Atherosclerosis Research Unit



*Future Directions in
Menopause Research:
Optimizing Midlife
Health of Women
Roundtable*

Specialized Centers of Research Excellence (SCORE) on Sex Differences (U54 Clinical Trial Optional)



BRIGHAM AND WOMEN'S HOSPITAL

Stress and neural regulation of reproductive aging health outcomes

NIH > NIA



Cedars Sinai

Microvascular aging and eicosanoids – Women's evaluation of systemic aging tenacity

NIH > NIA



EMORY UNIVERSITY

Influence of sex on microbial-host-pathogen interactions

NIH > NIA



JOHNS HOPKINS UNIVERSITY

Sex and age differences in immunity to influenza

NIH > NIA



MASSACHUSETTS GENERAL HOSPITAL

Sex differences in major depression: Impact of prenatal stress-immune and autonomic dysregulation

NIH > NIMH



MAYO CLINIC

Sex-specific effects of endocrine disruption on aging and Alzheimer's disease

NIH > NIA



MUSC Health
Medical University of South Carolina

Sex and gender impacts on addiction and stress-related disorders

NIH > NIDA



UCLA

Sex differences in the cardiometabolic health and disease

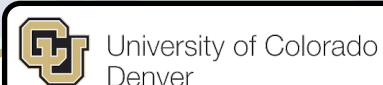
NIH > NHLBI



UCLA

Sex-related differences in brain-gut microbiome interactions in irritable bowel syndrome

NIH > NIDDK



University of Colorado Denver

Bioenergetic and cardiometabolic consequences of loss of gonadal function

NIH > NIA



Yale University

Sex differences in alcohol use disorder

NIH > NIAAA



AUGUSTA UNIVERSITY

Hypertension across health span through community outreach

NIH > NHLBI



Rural, Obese, At-Risk (ROAR) Collaborative Project Spanning 3 Universities, 4 Augusta University Colleges, and 10 Departments





Sex and Gender Updates



World Health Organization

March 2023

Adopts Sex and Gender Equity in Research (SAGER) guidelines



Photo credit: <https://ese-bookshelf.blogspot.com/2021/11/fifth-anniversary-of-sager-guidelines.html>

Sex As a Biological Variable (SABV) Policy and Sex-Inclusive Research: Making Progress, Taking Stock, and Visioning the Future

NIH Sex and Gender in Health and Disease Scientific Interest Group

November 30, 2023



David Page, M.D.
MIT
Pioneer Honoree

Janine Clayton, M.D.
ORWH
Luminary Honoree

43 [https://www.thelancet.com/journals/lancet/article/PIIS0140-6736\(23\)02807-6/abstract](https://www.thelancet.com/journals/lancet/article/PIIS0140-6736(23)02807-6/abstract)

<https://orwh.od.nih.gov/about/newsroom/events/sex-as-biological-variable-sabv-policy-and-sex-inclusive-research-making-progress-taking-stock-and>



World Health Organization Announces the Adoption of the SAGER Guidelines

Sex and Gender Equity in Research (SAGER) Guidelines

General principles

- **Authors should use the terms *sex and gender* carefully** in order to avoid confusing both terms.
- Where the subjects of research comprise organisms capable of differentiation by sex, **the research should be designed and conducted in a way that can reveal sex-related differences in the results**, even if these were not initially expected.
- **Where subjects can also be differentiated by gender** (shaped by social and cultural circumstances), **the research should be conducted similarly** at this additional level of distinction.

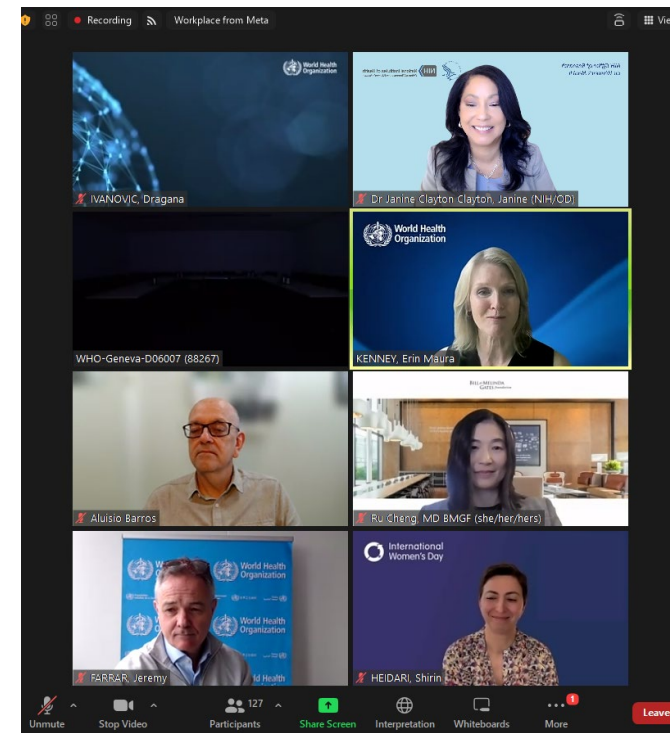
Heidari et al. *Research Integrity and Peer Review* (2016) 1:2 DOI 10.1186/s41073-016-0007-6

World Health Organization adopts SAGER

A significant step to bridge the gender evidence gap

Register now for our upcoming webinar on [World Health Organization's](#) adoption of the [#SAGERguidelines](#). Join distinguished panelists [Dr Janine Austin Clayton](#), Dr [Ru-fong Joanne Cheng, MD, FACOG](#), and Dr [Aluisio Barros](#), along with senior WHO officials. The discussion will be moderated by Dr Richard Horton of [The Lancet](#).

<https://ease.org.uk/2024/03/world-health-organization-adopts-sager/>



Sex and Gender Differences in Cancer Virtual Workshop Series

This series of virtual workshops will bring together those that are interested in sex and gender differences in cancer in the areas of basic biology, genomics, epigenetics, immunology, clinical/translational science, as well as population science, to learn about the latest research findings, identify gaps in our knowledge, identify potential collaborative opportunities, and learn best practices for methodology and reporting.

The series will culminate in a session with speakers and moderators to produce white papers summarizing the series for the benefit of the field

- 3.5 hrs : Keynote, research talks, and Panel discussion
- Organizers: NCI Divisions of Cancer Epidemiology and Genetics and Cancer Biology and Office of Research on Women's Health

Register Today!



NIH Sex & Gender Differences in Cancer Virtual Workshop Series

11AM-2:30PM ET

2/22 - Basic Science: Biology & Genomics

3/28 - Basic Science: Immunology

5/23 - Clinical Science

6/27 - Population Sciences

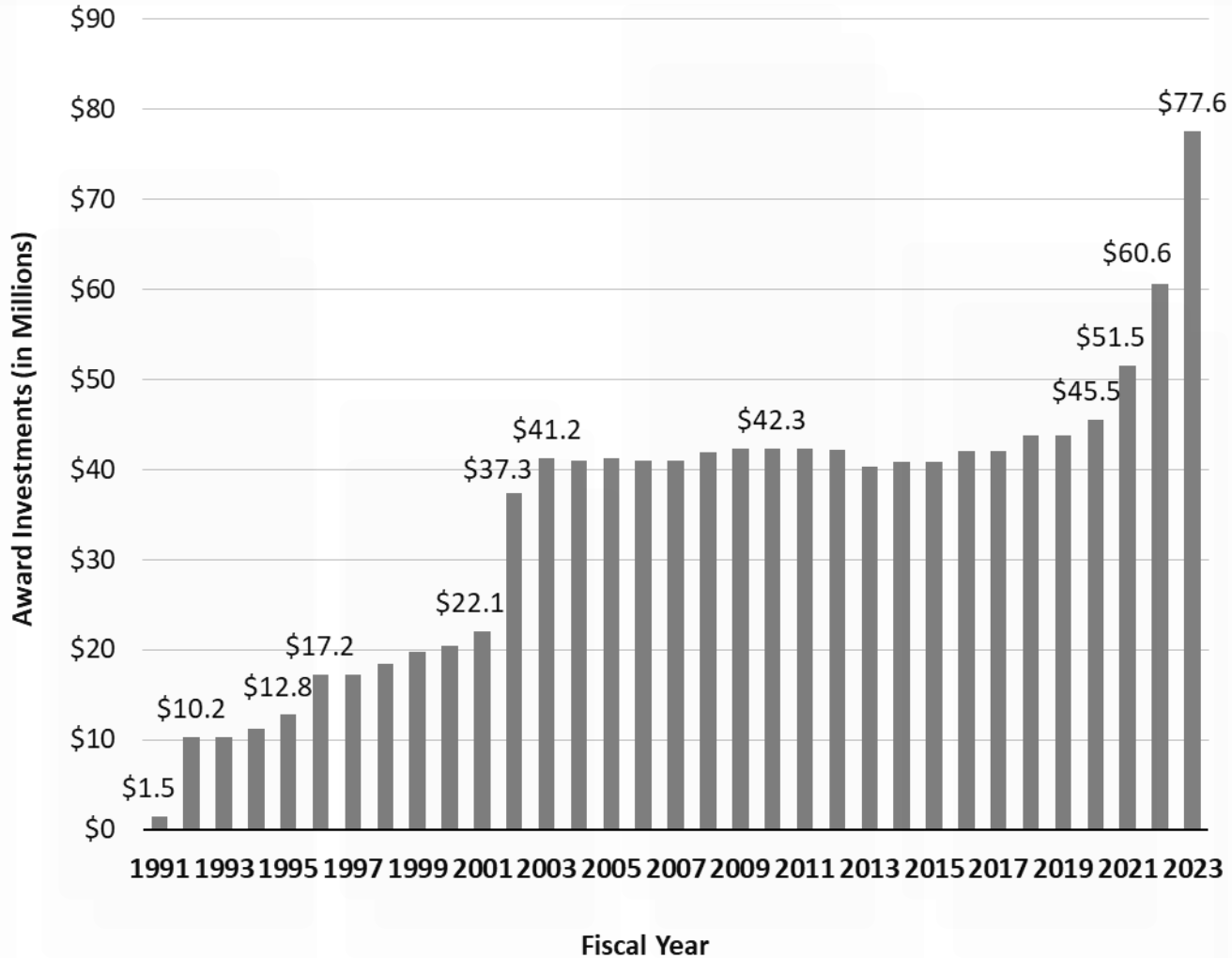


v.

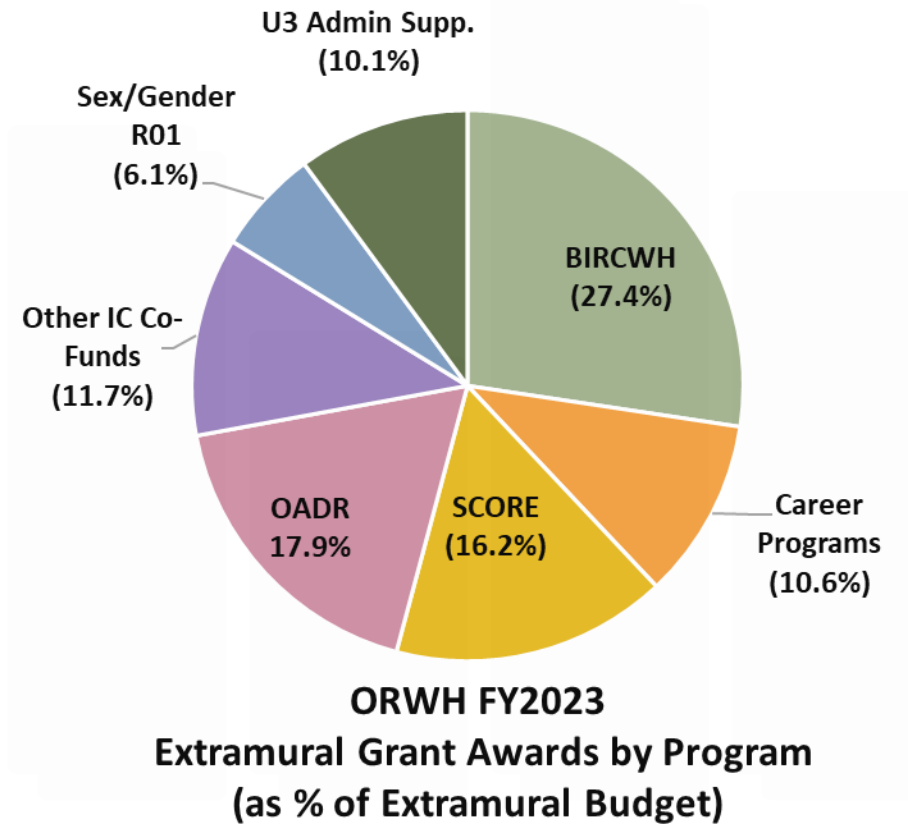
Funding

ORWH Budget History and FY 2023 Extramural Grant Award Profile

ORWH Budget History



Note: Award investments do not adjust for inflation.

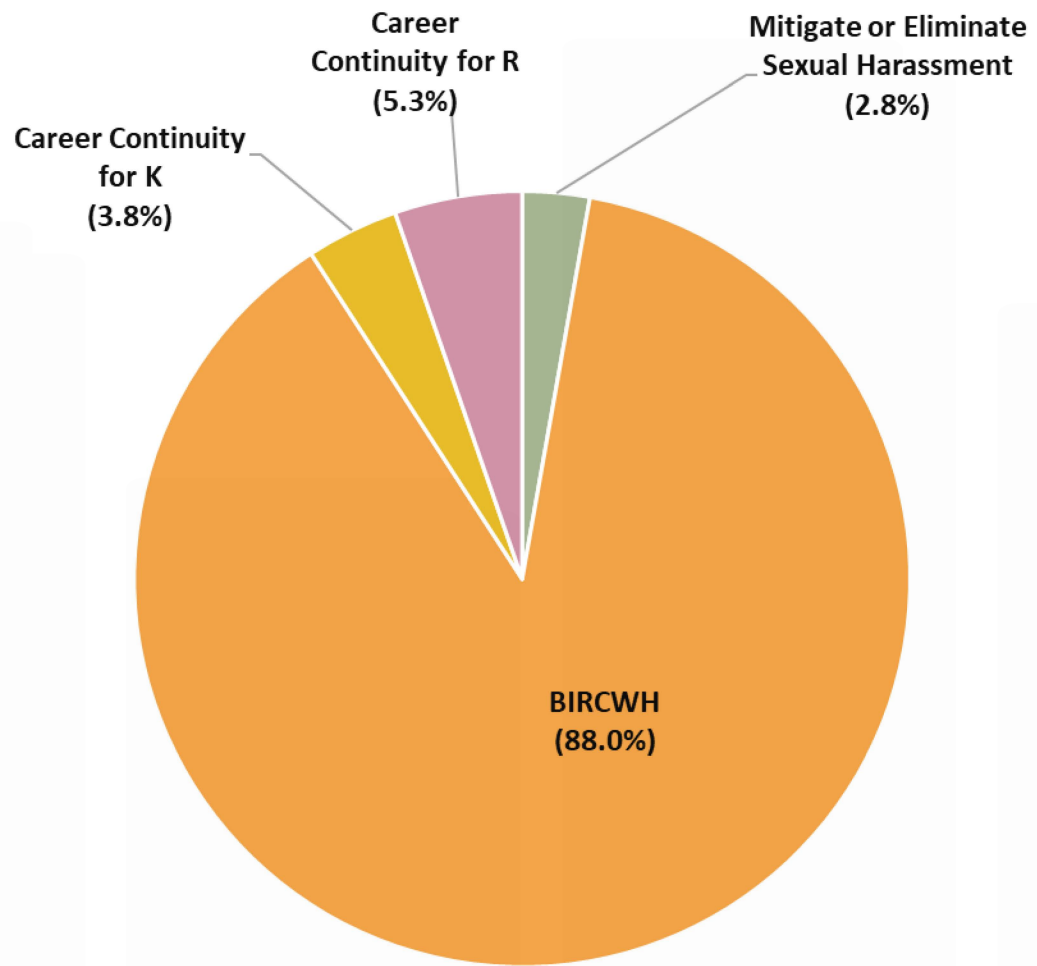


Source: NIH IMPAC II FY 2023 frozen data.

Note: ORWH total investments = \$51,104,971. Funding portfolio excludes R&D Contracts.

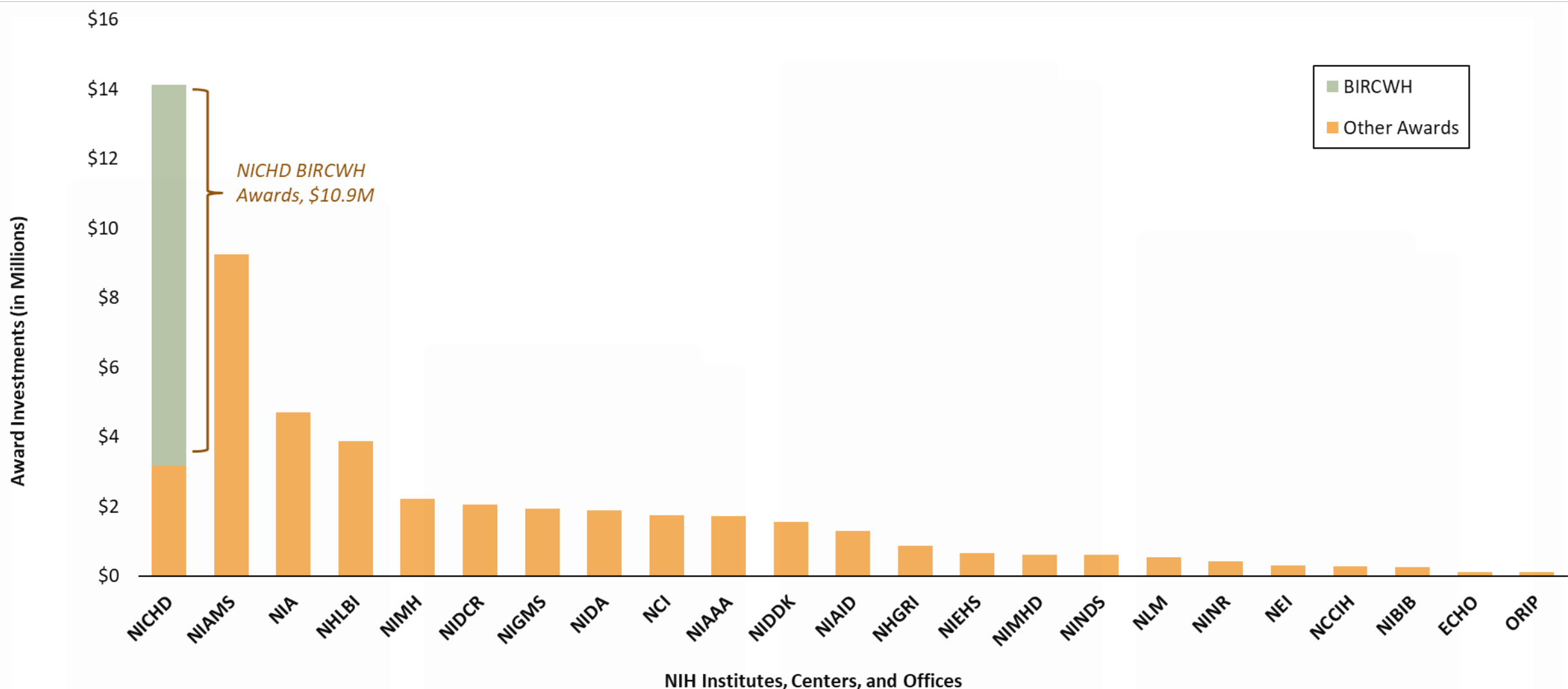
ORWH FY 2023 Career Programs

Total = \$15.9 M



Source: NIH IMPAC II FY 2023 frozen data Note: Excludes funding for the OITE program.

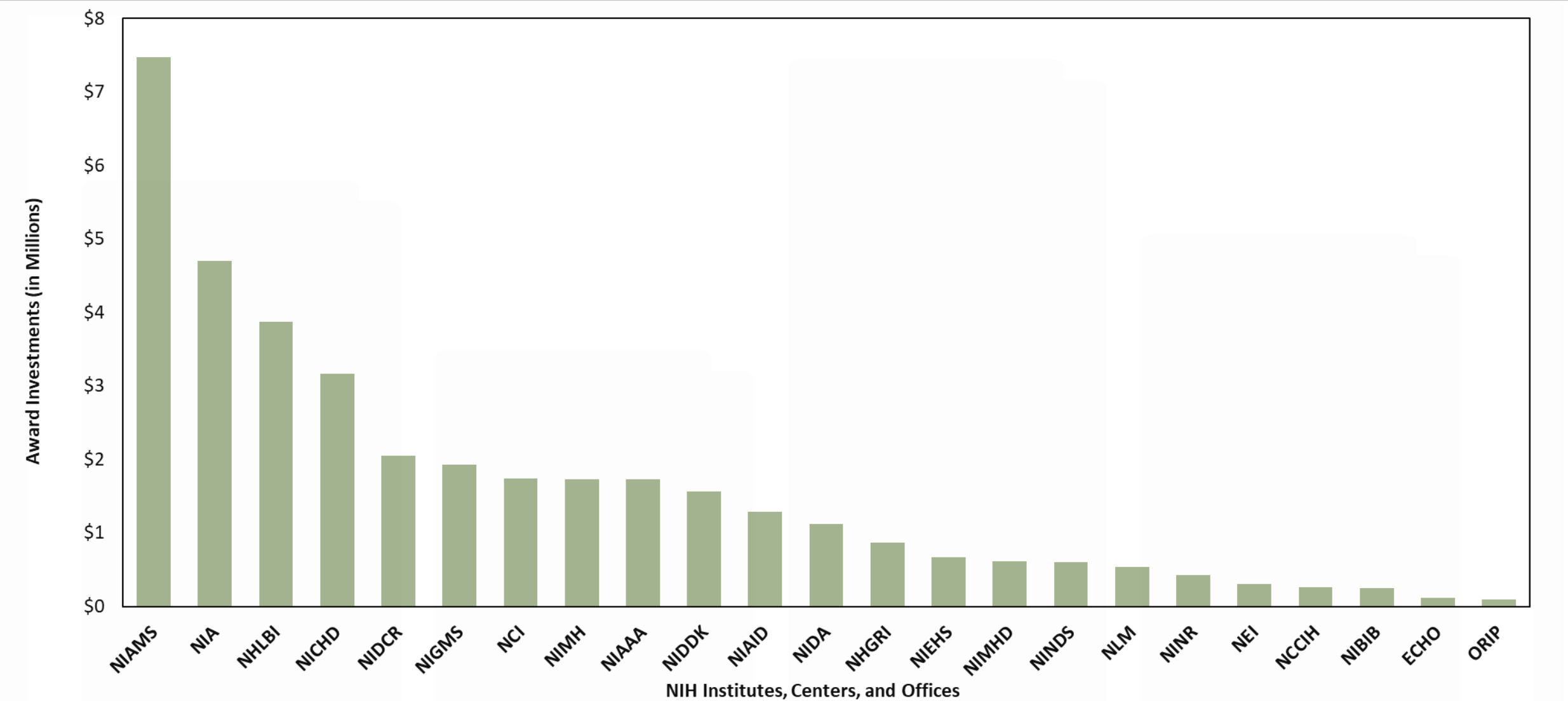
ORWH FY 2023 Extramural Award Investments by ICO (including BIRCWH funding)



Source: NIH IMPAC II FY 2023 frozen data.

Note: ORWH total investments = \$51,104,971. Funding portfolio excludes R&D Contracts.

ORWH FY 2023 Extramural Award Investments by ICO (excluding BIRCWH funding)



Source: NIH IMPAC II FY 2023 frozen data.
 Note: ORWH total investments = \$37,109,707. Funding portfolio excludes NICHD and NIDA BIRCWH investments and R&D Contracts.

ORWH Extramural Award Investments by Research Program in FY 2023

Program	ORWH Investments	# of Co-Funding ICs	List of Co-Funding ICs
BIRCWH*	\$13,995,264	4	NICHD, NIDA, NIAMS, NIMH
Career Programs:	\$5,420,700	14	NCI, NHLBI, NIDCR, NINDS, NIAID, NICHD, NIGMS, NIA, NIAMS, NIDA, NIAAA, NIMHD, NLM, ECHO
SCORE	\$8,260,386	6	NHLBI, NIDDK, NIA, NIMH, NIDA, NIAAA
Sex/Gender R01	\$3,138,774	7	NHGRI, NHLBI, NIA, NIAID, NIDA, NIDCR, NIEHS
OADR	\$1,877,128	8	NEI, NHLBI, NIAID, NIAMS, NIDCR, NICHD, NIMHD, NINDS
U3 Admin Supp.	\$5,156,450	12	NCI, NHLBI, NIA, NIAAA, NICHD, NIEHS, NIDDK, NIGMS, NIMH, NINDS, NINR, NCCIH
Other IC Co-Funds	\$5,967,015	15	NCI, NHGRI, NHLBI, NIA, NIAID, NIAMS, NIBIB, NICHD, NIDCR, NIDDK, NIGMS, NIMH, NINDS, NINR, ORIP

* In FY2023, NICHD, NIDA, NCI, NIAAA, and NIAID also supported the BIRCWH program with additional funds.

IV.

Careers

»» Team Science Leadership Scholar Program (LSP) in Women's Health, Autoimmune and Immune-Mediated Diseases

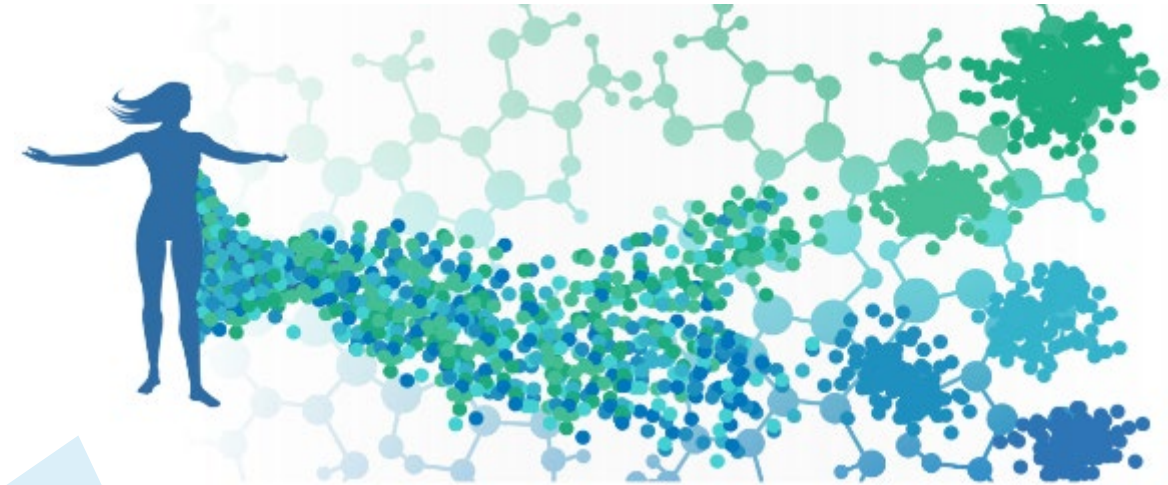
A pilot program to support and train women's health scholars by helping them acquire and hone team science leadership and mentoring skills

An immersive, cross-sectoral, collaborative experience that will enable women's health scholars to become large consortium team leaders

2023 LSP Awardees:

Sheila Angeles-Han, M.D., M.S.
April Lynn Barnado, M.D., MSCI
Monica Guma, M.D., Ph.D.
Sara McCoy, M.D., Ph.D.
Paula Sofia Ramos, M.D., M.Sc.
Kelly Ruggles, Ph.D., M.S.

**2024 LSP
Funding
Opportunity
closed April 1**

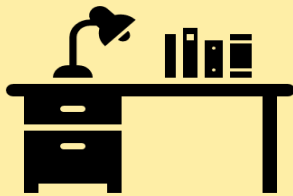


NEW Toolkit- Prize Competition for Enhancing Faculty Gender Diversity:

2021 Prize
Competition
Forum Executive
Summary



June 2022: 10 winners of the
Prize Competition and 6
honorable mentions
announced



Toolkit Methodology
available on ORWH
website

The Toolkit was developed to highlight **successful strategies, best practices, and interventions** submitted to the prize competition and to link these strategies and best practices with evidence of their output, outcomes, and impact.



<https://orwh.od.nih.gov/career-development-education/prize-competition>

<https://orwh.od.nih.gov/prize-competition-toolkit>

<https://orwh.od.nih.gov/prize-competition-toolkit/methodology>



NIH National Institutes of Health
Office of Research on Women's Health

ORWH Supports Junior and Early-Stage Career Investigators to Attend The Menopause Society Annual Meeting

2024 NIH ORWH Science Policy
Scholar Travel Award Recipient:
Organization for the Study of Sex
Differences Annual Meeting



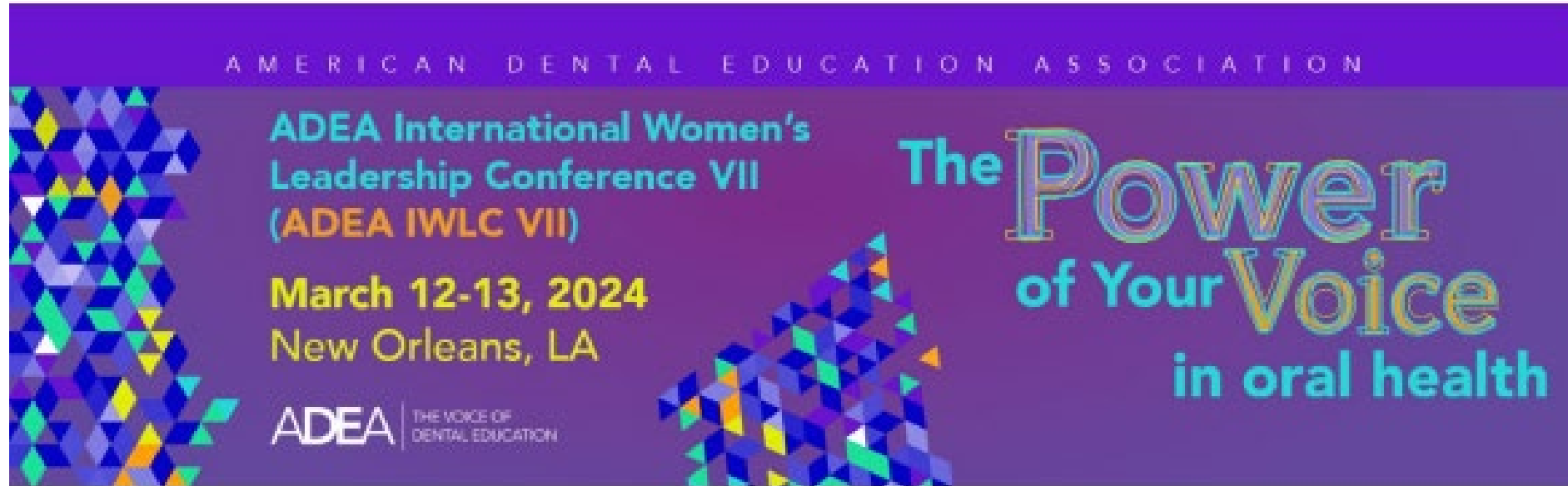
Mayte Restrepo, Ph.D., M.P.H., M.A.
University of Connecticut
Armed Conflict and Women's Intimate
Partner Violence Risk in Colombia

- Travel awards to support the development of two junior investigators interested in the study of menopause
- Award provides two junior investigators up to \$3,000 each to attend the Menopause Society Annual Meeting
- Winners will be announced in July 2024

¹Photo credit: <https://ossd.memberclicks.net/>

²Photo credit: <https://www.menopause.org/docs/default-source/press-release/name-change-announcement.pdf>

2024 American Dental Education Association International Women's Leadership Conference



Theme: Inquiry and Intervention through Scholarship and Research

Plenary Presentation: The Science of Science, Bias and Improving Women's Health through Research and Leadership

¹Photo credit: https://www.adea.org/uploadedFiles/ADEA/Functional_Navigation/Events/ADEA_IWLC/2024-ADEA-IWLCVII-Advising-Program-Information.pdf

EVENTS



SAVE THE DATE!



Eighth Annual Vivian W. Pinn Symposium | May 15, 2024

Honoring the first full-time director of ORWH | Held annually during National Women's Health Week

Synergy in Science: Innovations in Autoimmune Disease Research and Care

May 15, 2024 | Virtual Meeting



Capstone Speaker:

Gail Kerr, M.D., FRCP (Edin), FACR, MACR
Washington, DC, VAMC, Georgetown and
Howard University Hospitals



Keynote Speaker:
Jane Buckner, M.D.,
President & Member,
Benaroya Research
Institute

Upcoming Women's Health Research Events 2024

Caregiving Report Public Release: Policies and Practices for Supporting Family Caregivers Working in Science, Engineering, and Medicine

April 11, 2024

11:00 am – 12:30 pm

OADR-ORWH Science Talks

April 23, 2024

12:00 pm – 2:00 pm

Updates on OADR-ORWH Session 3

May 3, 2024

12:00 pm – 12:45 pm

National Women's Health Week Special Events & Announcements

8th Annual Vivian Pinn Symposium

May 15, 2024

1:00 pm – 5:00 pm

Future Directions in Menopause Research: Optimizing Midlife Health of Women Roundtable

May 16, 2024

11:00 am – 1:00 pm

NIH Sex & Gender Differences in Cancer Virtual Workshop

May 23, 2024

11:00 am – 2:30 pm



CONNECT WITH ORWH

The Pulse

Monthly Email

bit.ly/ORWHpulse *



bit.ly/ORWHevents

WOMEN'S HEALTH *In Focus* AT NIH A QUARTERLY PUBLICATION OF THE NIH OFFICE OF RESEARCH ON WOMEN'S HEALTH



bit.ly/ORWHInFocus

**All Bitly addresses are case-sensitive*

@JanineClaytonMD
 @NIH_ORWH
 NIHORWH
NIH.gov/women

E-LEARNING



- Bench to Bedside: Integrating Sex & Gender to Improve Human Health
- SABV Primer
- And more!

bit.ly/ORWHeLearning

www.nih.gov/women



NIH National Institutes of Health
Office of Research on Women's Health