



NIH Office of Research on Women's Health

59th Meeting of the NIH Advisory Committee on Research on Women's Health

Janine Austin Clayton, M.D., FARVO

NIH Associate Director for Research on Women's Health
Director, Office of Research on Women's Health
National Institutes of Health

October 18, 2023 – Director's Report

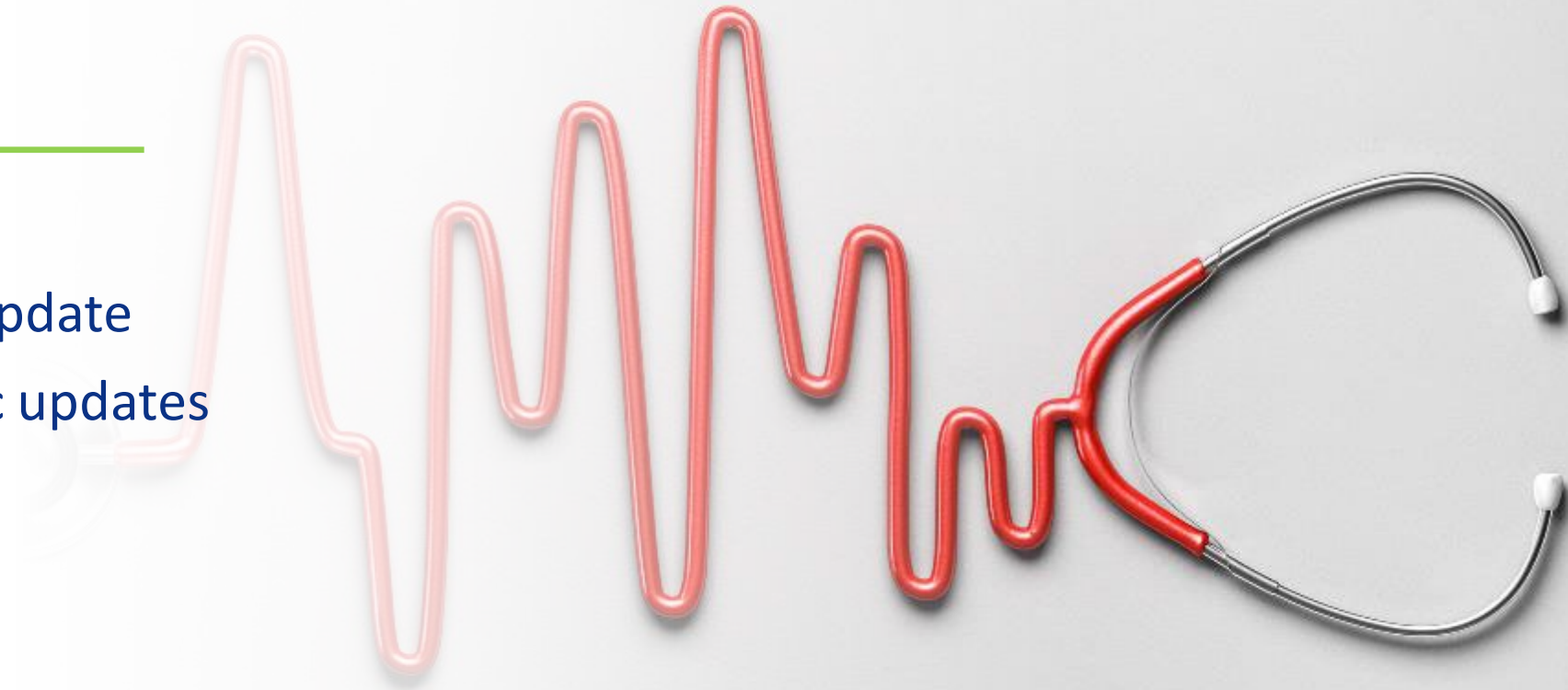


Facebook: /NIHORWH
Twitter: @NIH_ORWH

www.nih.gov/women
[#ResearchForWomen](https://twitter.com/NIH_ORWH)

Outline

- I. Opening remarks
- II. ORWH and NIH update
- III. Policy & Scientific updates
- IV. Careers
- V. Closing



Women Face Host Of Disadvantages In Cancer Prevention And Care

The New York Times

New Online

Views 1,163

Citations 0

Altmetric 616

Research Letter

ONLINE FIRST

October 12, 2023

The Burden of Lung Cancer in Women Compared With Men in the US

Ahmedin Jemal, DVM, PhD¹; Elizabeth J. Schafer, MPH¹; Hyuna Sung, PhD¹; et al

➤ Author Affiliations

JAMA Oncol. Published online October 12, 2023. doi:10.1001/jamaoncol.2023.4415

A previous study from the American Cancer Society reported higher lung cancer incidence in women than men younger than 50 years in the US, a reversal in the historically higher burden in men that was not fully explained by smoking differences.¹ It is unknown, however, whether this pattern has changed in contemporary birth cohorts. Herein, we extended the previous analysis with an additional 5 years of data to monitor shifts in lung cancer incidence by age and sex.

200 Years of the Lancet!

THE LANCET

September 2023

www.thelancet.com

Women, power, and cancer:
a Lancet Commission



"Of the 2.3 million women who die prematurely from cancer each year, 1.5 million deaths could be averted through primary prevention or early detection strategies, while a further 800 000 deaths could be averted if all women everywhere could access optimal cancer care."

Read the full Commission report at [thelancet.com](https://www.thelancet.com)

A Commission by The Lancet

* <https://www.statnews.com/2023/09/26/cancer-care-women-power-dynamics-lancet/#:~:text=%E2%80%9COn%20the%20whole%2C%20cancer%20is%20less%20preventable,understand%20about%20emerging%20risks%20for%20women.%E2%80%9D%20advertisement>

** [https://www.thelancet.com/journals/lancet/article/PIIS0140-6736\(23\)01847-0/fulltext](https://www.thelancet.com/journals/lancet/article/PIIS0140-6736(23)01847-0/fulltext)



NIH National Institutes of Health
Office of Research on Women's Health

Women Face Host Of Disadvantages In Cancer Prevention And Care

200 Years of the Lancet!

“On the whole, cancer is **less preventable** in women than in men — that’s a very surprising statement for most of my colleagues, including me,”

“That’s a very important finding, and it has to do with what we don’t understand about **emerging risks for women.**” *

Ophira Ginsburg, M.D., M.Sc.

National Cancer Institute

Center for Global Health

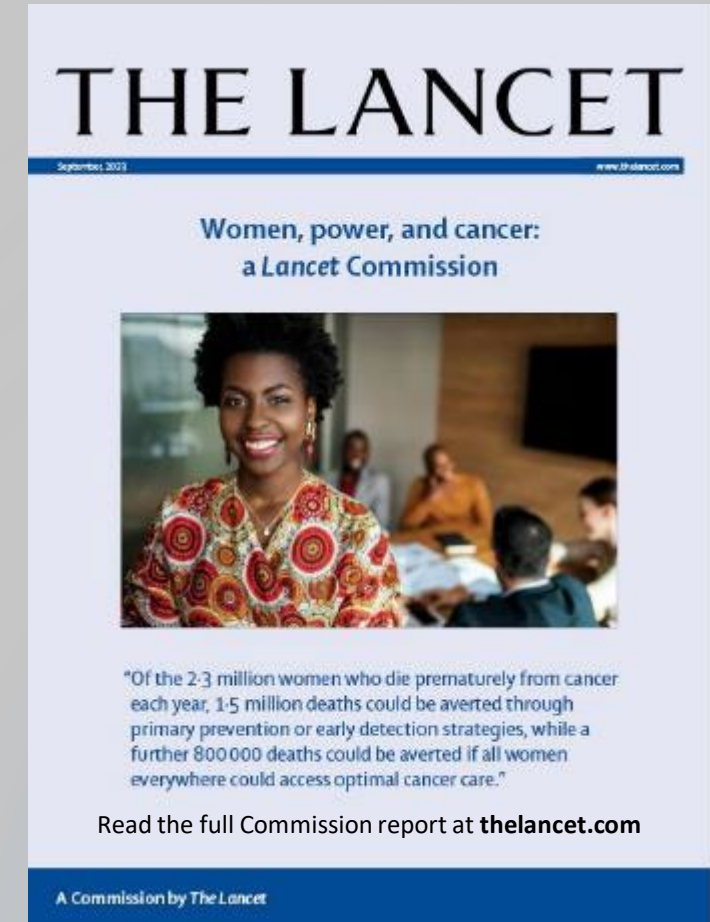
Senior Advisor for Clinical Research

“**Everyone** in society has a **role** in contributing to **progress against cancer**, ranging from adhering to cancer prevention approaches and working in communities to leading large organizations.”**

Monica Bertagnolli, M.D.

National Cancer Institute

National Institutes of Health

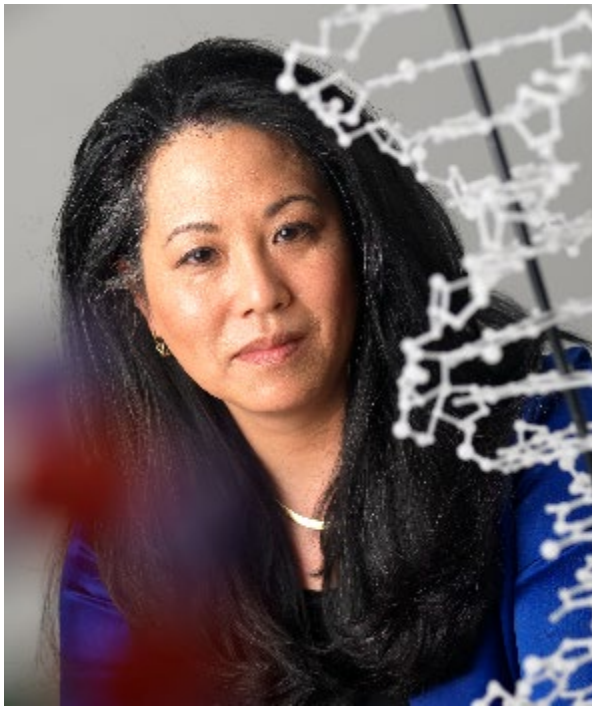


* <https://www.statnews.com/2023/09/26/cancer-care-women-power-dynamics-lancet/#:~:text=%E2%80%9COn%20the%20whole%2C%20cancer%20is%20less%20preventable,understand%20about%20emerging%20risks%20for%20women.%E2%80%9D%20advertisement>

** [https://www.thelancet.com/journals/lancet/article/PIIS0140-6736\(23\)01847-0/fulltext](https://www.thelancet.com/journals/lancet/article/PIIS0140-6736(23)01847-0/fulltext)

II.

ORWH and NIH Update



Vivian Ota Wang, M.Phil., Ph.D.

Deputy Director

Office of Research on Women's Health



Associate Director for the Interdisciplinary Research (IDR) Section

- ✓ ORWH/DPCPSI/OD/NIH
- ✓ Will encompass ORWH's dissemination and implementation, prevention, innovation, and global health research activities
- ✓ Aligned with the NIH-wide Strategic Plan for Women's Health Research



1

Monica Bertagnolli, M.D.

Nominated by President Biden as the next **NIH Director**



2

Jeanne Marazzo, M.D., M.P.H.

Director, National Institute of Allergy and Infectious Disease



3

Jane Simoni

Director, Office of Behavioral and Social Sciences Research



4

Patricia Flatley Brennan, R.N., Ph.D. — **RETIRED!**

Director, National Library of Medicine

11

Number of women
IC directors



Stephen Sherry, Ph.D.

Acting Director
National Library of Medicine

¹Photo credit: <https://www.nih.gov/about-nih/who-we-are/nih-director/statements/appointment-dr-monica-bertagnolli-director-national-cancer-institute>

²Photo credit: <https://www.niaid.nih.gov/about/jeanne-marrazzo-md-mph>

³Photo credit: <https://www.nih.gov/about-nih/who-we-are/nih-director/statements/dr-jane-m-simoni-selected-associate-director-behavioral-social-sciences-research-nih>

⁴Photo credit: <https://www.nlm.nih.gov/od/roster/brennan.html>

Updating the NIH Mission Statement

Proposed mission statement:

“To seek fundamental knowledge about the nature and behavior of living systems and to apply that knowledge to optimize health and prevent or reduce illness for all people.”

Feedback accepted through
November 24, 2023

Words Matter, Actions Have Impact: Updating the NIH Mission Statement

Posted on September 28th, 2023 by Lawrence Tabak, D.D.S., Ph.D.



Credit: Donny Bliss, NIH

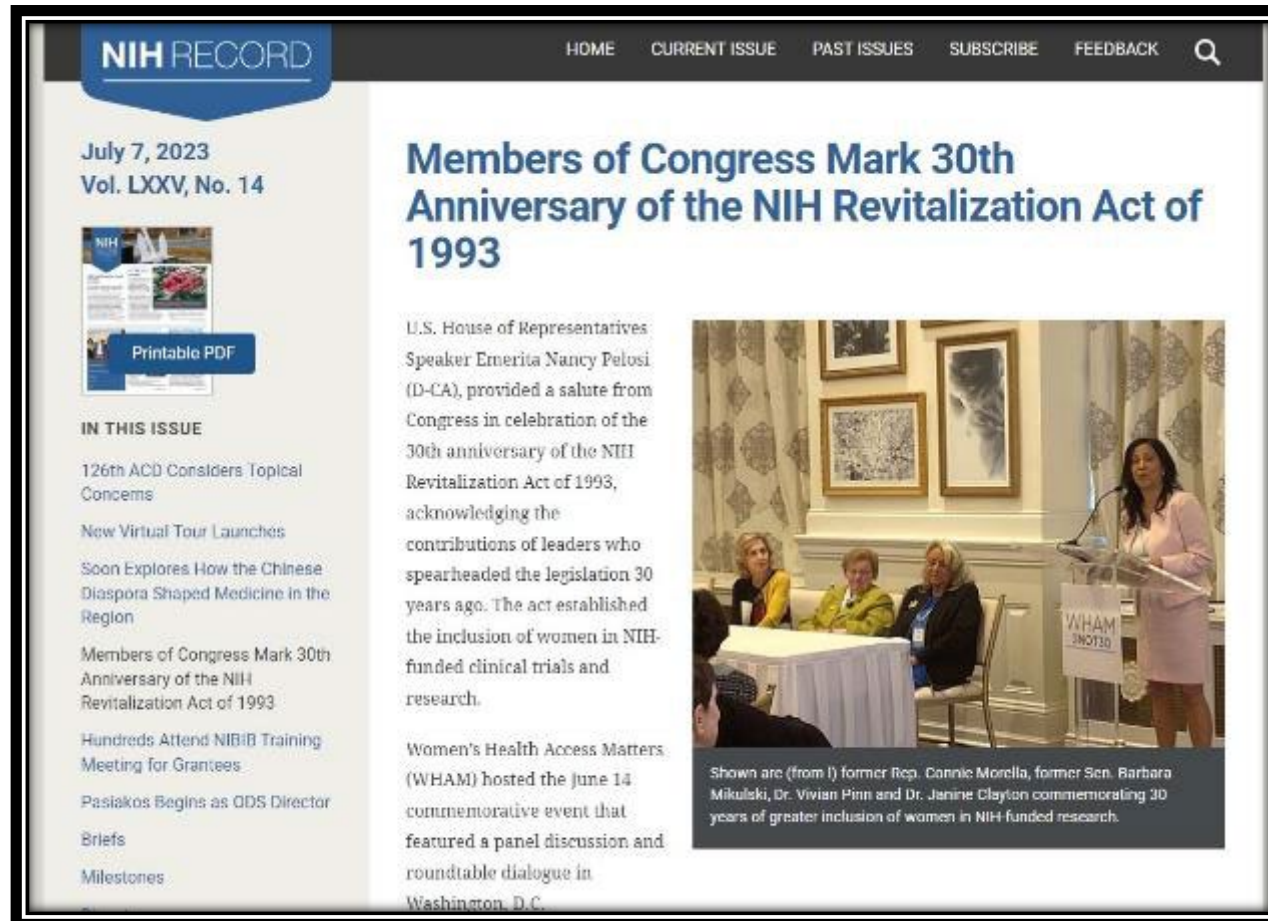
Feedback Link:
<https://rfi.grants.nih.gov/?s=64caaa8bb1112e46ad0a1d52>



NIH National Institutes of Health
Office of Research on Women's Health

NIH Revitalization Act of 1993 Celebrates 30th Anniversary

The Act required the inclusion of women and minority groups in NIH-funded clinical trials and research



¹<https://nihrecord.nih.gov/2023/07/07/members-congress-mark-30th-anniversary-nih-revitalization-act-1993>

²https://irp.nih.gov/system/files/media/file/2022-01/NIH_catalyst_v01i1_1993-Feb.pdf

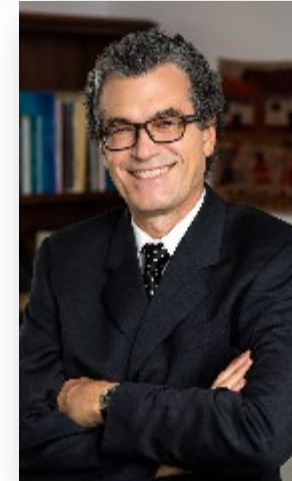
NIH Announced People With Disabilities As A Population With Health Disparities

Health and Health Care Disparities
Among Persons Living with
Disabilities R01

Open date: January 5, 2024

Decision made in consultation with:

- Agency for Healthcare Research and Quality
- National Advisory Council on Minority Health and Health Disparities Working Group on Persons Living with Disabilities report
- Disability community input
- Review of science and evidence



Eliseo J. Pérez-Stable, M.D.
Director



Robert Otto Valdez Ph.D., M.H.S.A.
Director



NIH Seeking Comment on Draft Scientific Integrity Policy

- Draft policy articulates the procedures and processes in place at NIH that help maintain rigorous scientific integrity practices.
- Draft policy proposes several new functions to further enhance scientific integrity at NIH and throughout the biomedical research enterprise.
- Comments accepted until **November 9, 2023**





NIH Has Funded Menopause Research for 30+ Years



Women's Health Initiative



Study of Women's Health Across the Nation



Menopause Strategies: Finding Lasting Answers for Symptoms and Health Trials



Menopausal Vasomotor Symptoms and Brain Aging in Women



7th Annual Vivian W. Pinn Symposium:
Menopause and Optimizing Midlife Health of Women



ORWH:
Women's Health In Focus at NIH
Research on Menopause
Volume 5, Issue 2, 2022



NIH Has Funded Menopause Research for 30+ Years



Women's Health Initiative



Study of Women's Health Across the Nation



Menopause Strategies: Finding Lasting Answers for Symptoms and Health Trials



Menopausal Vasomotor Symptoms and Brain Aging in Women

ORWH created a NEW travel award for the North American Menopause Society meeting

NEW! NIH MedlinePlus Magazine article
Menopause: What you need to know

NIH Community Partnerships to Advance Society (ComPASS)



National Institutes of Health

Office of Strategic Coordination–The Common Fund

ComPASS

- Program duration: 10 years
- Planned budget: ~ \$153M over a 5-year period

OTA-22-007 (OTA)
Up to 25 awards, FY23

RFA-RM-23-012 (U2C)
Up to 5 awards, FY24

RFA-RM-23-001 (U24)
1 award, FY23



Community-Led, Health Equity Structural Interventions (CHESIs)



Health Equity Research Hubs (Hubs)



ComPASS Coordination Center (CCC)

ComPASS



Community-Led, Health Equity
Structural Interventions (CHESIs)

ComPASS Community-Led Health Equity Structural Interventions (CHESIs) OTA-22-007

- CHESIs will develop, implement, assess, and disseminate co-created community-led, health equity structural interventions in partnership with research organizations, by intervening upon structural factors that produce and perpetuate health disparities.
- Scientific review incorporated community members and those with lived experience.
- ***Earliest State Date:***
 - September 2023

Social Determinants of Health (SDOH)/ Structural Factors of the CHESI Awards



ComPASS Community-Led, Health Equity Structural Interventions (CHESIs): Three-Phased Approach

1

PLANNING (Year 1-2)

- Plan, develop, pilot (as appropriate) structural interventions
 - Capacity and partnership building
- Develop local Health Equity Research Assembly (HERA)

2

IMPLEMENTATION (Year 3-8)

- Implement community-led, health equity structural interventions, with local HERAs
 - Interventions will influence health outcomes across multiple health conditions and diseases

3

DISSEMINATION (Year 9-10)

- Assess health impacts of structural intervention research findings
- Develop dissemination and sustainability plan for structural interventions



www.builduptrust.org

The [National Heart, Lung, and Blood Institute](#) (NHLBI) is administering this challenge competition along with the following cosponsors from across the NIH:

[All of Us Research Program](#)

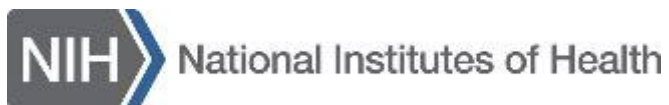
[NIH Common Fund-Community Partnerships to Advance Science for Society \(ComPASS\)](#)

[National Institute of Allergy and Infectious Diseases \(NIAID\)](#)

[National Institute of Biomedical Imaging and Bioengineering \(NIBIB\)](#)

[National Institute of Environmental Health Sciences \(NIEHS\)](#)

[National Institute of Neurological Disorders and Stroke \(NINDS\)](#)



The NIH Build UP Trust Challenge will **award a total of up to \$1.25 million** for solutions that **increase research participation** and **the adoption of medical care** by **building trust** and **improving engagement** with [minority health populations and populations with health disparities](#).



Important dates:

- Registration deadline: **Nov 14, 2023, 5 PM ET***
- Submission deadline: **Dec 5, 2023, 5 PM ET**

** Registration is required*



NIH is Advancing Social Determinants of Health Research Through Cross-Cutting Collaboration



Eliseo J. Pérez-Stable M.D.

Director

National Institute on Minority Health and Health Disparities (NIMHD)



Shannon N. Zenk, Ph.D., M.P.H., R.N.

Director

National Institute of Nursing Research (NINR)

“The ultimate goal of this coordinated effort is to increase the impact of the research so that the findings support individuals, communities, and populations in a manner that improves health, reduces health disparities, and advances health equity.”

NIH-wide Social Determinants of Health Research Coordinating Committee

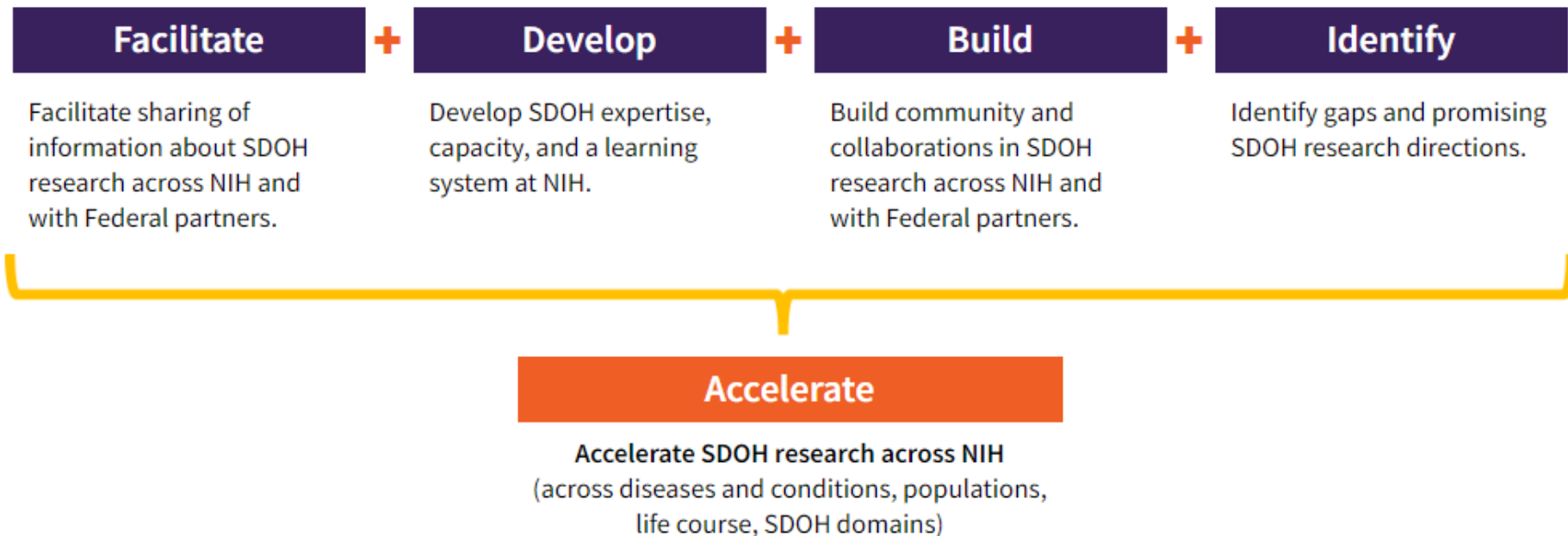
<https://www.ninr.nih.gov/newsandinformation/newsandnotes/sdoh-rcc-001>





NIH is Advancing Social Determinants of Health Research Through Cross-Cutting Collaboration

To achieve its goals, the SDOH RCC outlined the following objectives:



NIH-wide Social Determinants of Health Research Coordinating Committee

<https://www.ninr.nih.gov/newsandinformation/newsandnotes/sdoh-rcc-001>

III.

Policy & Scientific Updates

Congress Requests Assessment of NIH Research on Women's Health

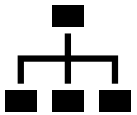
NATIONAL
ACADEMIES Sciences
Engineering
Medicine



Research priorities for NIH-supported research on women's health



NIH training and education efforts to build, support, and maintain a robust women's health research workforce



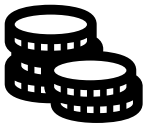
NIH structure (extra- and intra-mural), systems, review processes to optimize women's health research



NIH-wide workforce to effectively solicit, review and support women's health research



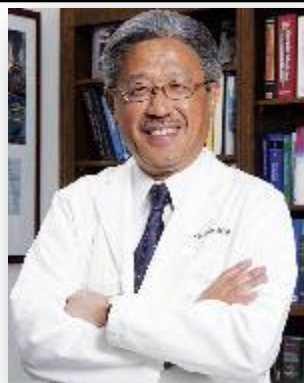
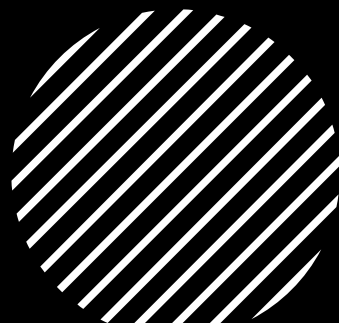
Defining women's health in today's social and cultural climate



Allocation of funding such that NIH women's health funding is reflective of the burdens of disease among women.



National Academy of Medicine Annual Meeting Focused on Women's Health



Victor J. Dzau, M.D.
President
National Academy of Medicine



<https://nam.edu/member-home/2023-nam-annual-meeting/>



Monica Bertagnolli, M.D.
Director
National Cancer Institute

Panel 1: Sex and Gender Differences: Understanding the Biological and Social Determinants of Women's Health — 10:50 am – 12:10 pm

Panel 2: Addressing Maternal and Reproductive Health in the Current U.S. Landscape: Innovation to Improve Inequities, Care, and Outcomes — 1:30 pm – 3:10 pm

Panel 3: Health Across the Lifespan: Achieving Healthy Longevity for Women — 3:10 pm – 4:30 pm

President's Forum: Revolutionizing Women's Health: Envisioning a New Era of Progress, Policy, and Research — 4:30 pm – 6:00 pm

¹Photo credit: <https://medicine.duke.edu/profile/victor-j-dzau>

²Photo credit: <https://www.nih.gov/about-nih/who-we-are/nih-director/statements/appointment-dr-monica-bertagnolli-director-national-cancer-institute>



National Academies of Sciences, Engineering, and Medicine

Chronic Diseases Working Group



<https://pubmed.ncbi.nlm.nih.gov/37024841/>

The ad hoc committee of NASEM will:

1. Review the existing literature on chronic debilitating conditions specific to women.
2. Assemble evidence-based findings on chronic debilitating conditions in women.
3. Produce a report that describes current gaps in evidence and provides a suggested research agenda for the future.



National Academies of Sciences, Engineering, and Medicine



NEW Standing Committee on Reproductive Health, Equity, and Society

Expert committee will:

- Evaluate the health, social, and economic implications of access to reproductive health care in the U.S. and globally in order to inform related program and activity development at NASEM.
- Exchange ideas among federal, state, and local government agencies, the private sector, and the academic community.

<https://www.nationalacademies.org/our-work/standing-committee-on-reproductive-health-equity-and-society>

<https://www.nationalacademies.org/our-work/framework-for-the-consideration-of-chronic-debilitating-conditions-in-women>

RFA-OD-23-013 and RFA-OD-23-014: Understanding Chronic Conditions Understudied Among Women (R01/R21)



ADVANCING SCIENCE FOR
THE HEALTH OF WOMEN

*The Trans-NIH Strategic Plan for
Women's Health Research*

Objective 1.5 – Expand research on female-specific conditions and diseases, including reproductive stages, and maternal and gynecologic health

Purpose:

Invite applications on chronic conditions understudied among women and/or that disproportionately affect populations of women who are understudied, underrepresented, and underreported in biomedical Research should align with Goal 1 of the 2019-2023 Trans-NIH Strategic Plan for Women's Health Research "Advancing Science for the Health of Women."

Application due date: June 20, 2024

Partner ICs: NIA, NIAMS, NCI, NICHD, NHLBI

<https://grants.nih.gov/grants/guide/rfa-files/RFA-OD-23-013.html>

<https://grants.nih.gov/grants/guide/rfa-files/RFA-OD-23-014.html>

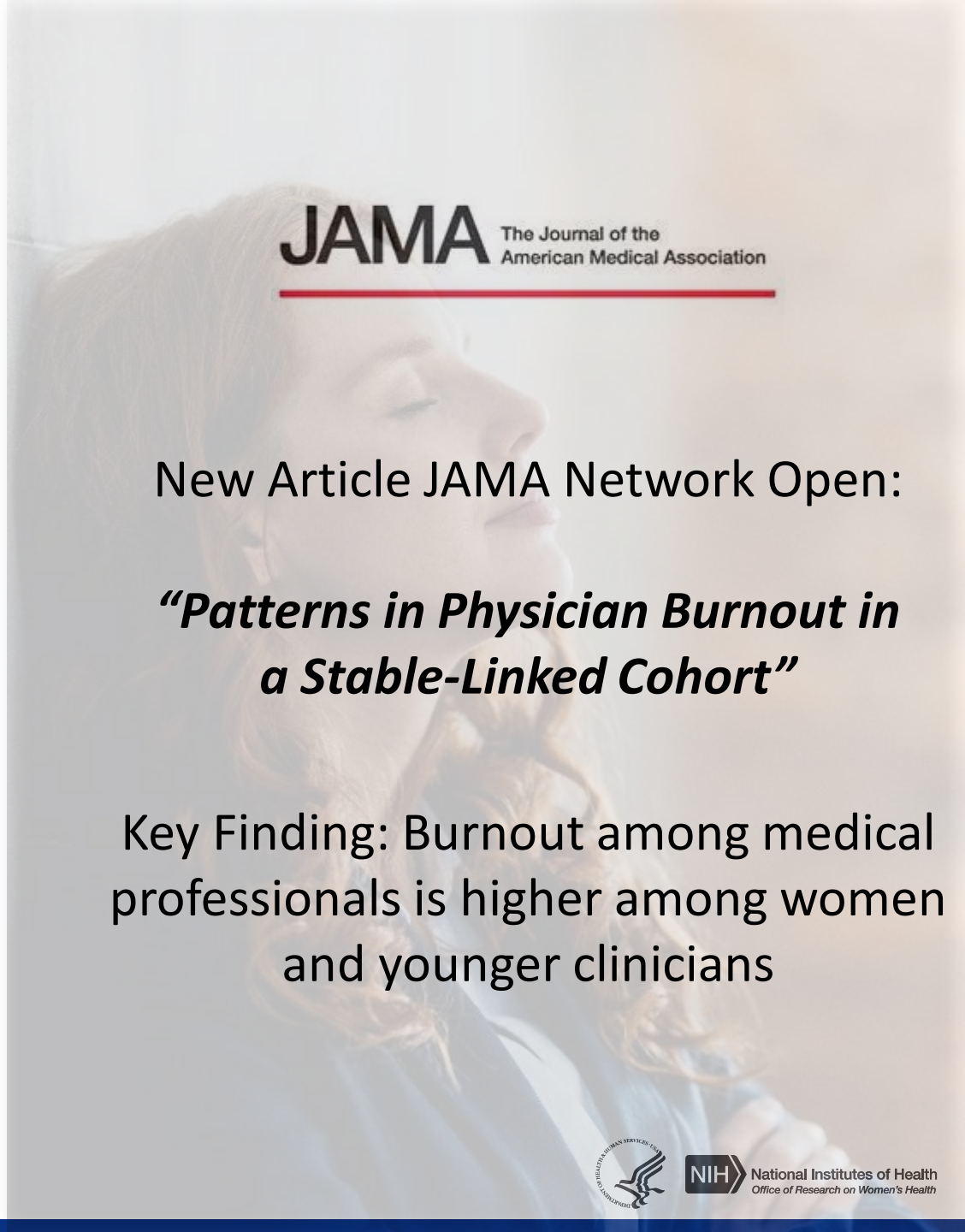


ORWH Sponsors NASEM Workshop on Impact of Burnout on Gender Equity in STEMM

NASEM will convene a panel of experts to host 2-day, hybrid public workshop and publish a workshop proceedings.

The workshop will:

- Take an **intersectional approach**
- Place emphasis on women of color, women with disabilities, and sexual and gender minority women
- Consider the disciplinary differences in burnout across STEMM fields
- Give particular attention to groups that the research has shown are disproportionately affected by burnout
 - ❖ Contingent positions; Early and mid-career positions; Caregivers



JAMA The Journal of the
American Medical Association

New Article JAMA Network Open:

“Patterns in Physician Burnout in a Stable-Linked Cohort”

Key Finding: Burnout among medical professionals is higher among women and younger clinicians

Women's Health Innovation Opportunity Map

Report Launch - October 8, 2023



Women's Health Innovation Opportunity Map 2023

50 High-Return Opportunities
to Advance Global Women's Health R&D

A report of the Innovation Equity Forum, sponsored by the
ITB & Microsoft Global Foundation and the National Institutes of Health



Prioritize resources and efforts by five criteria

Potential for impact

Readiness

Innovation

Matters to women

Equity

Using four lenses

Serving the underserved

Sex and gender influences

Life course perspective

Quality of life and well-being

Data and modeling

Research design and methodologies

Regulatory and science policy

Innovation introduction

Social and structural determinants

Training and careers

Communicable diseases

Non-communicable and chronic conditions

Female-specific conditions

Powered by Partnerships

Full Report: <https://bit.ly/3PEcL20>

Executive Summary: <https://bit.ly/3RBglax>

NIMHD publishes two new funding opportunities in Latin America

Project grants support research on chronic non-communicable conditions

Title	Link	Open Date	ICOs
Unveiling Health and Healthcare Disparities in Non-Communicable and Chronic Diseases in Latin America: Setting the Stage for Better Health Outcomes Across the Hemisphere (R01 - Clinical Trials Not Allowed)	PAR-23-303	01/05/2024	NIMHD NIA NINR NCI ORWH
Interventions on Health and Healthcare Disparities on Non-Communicable and Chronic Diseases in Latin America: Improving Health Outcomes Across the Hemisphere (R01 - Clinical Trial Required)	PAR-23-304	01/05/2024	NIMHD NINR ORWH

<https://grants.nih.gov/grants/guide/pa-files/PAR-23-303.html>
<https://grants.nih.gov/grants/guide/pa-files/PAR-23-304.html>



NIH HIV and Women Signature Program

NEW RFI on Research Opportunities Related to HIV and Women's Health
[NOT-OD-24-011](https://oar.nih.gov/niw-hiv-research-program/hiv-women)

Program Objectives

- Ensure all women, including cisgender women, transgender women, and individuals assigned female at birth, receive evidence-based HIV care, prevention, and treatment tailored to their own needs, circumstances, and goals
- Support women in science careers to reach their full professional potential

Strategies

- Ongoing internal and extramural collaboration, led by NIH OAR and ORWH
- Increase information dissemination and NIH-wide collaboration
 - September 6, 2023: Workshop and listening session at US Conference on HIV and AIDS
 - March 21-22, 2024: Virtual scientific workshop



<https://oar.nih.gov/niw-hiv-research-program/hiv-women>

WomenandHIV@od.nih.gov





OADR-ORWH Achievements and Future Activities

Infrastructure

- Established OADR-ORWH Core
- NIH Office establishment activities
- Recruit two FTEs

Scientific Direction

- Established NIH-wide Coordinating Committee (CCADR)
- Develop strategic plan
- Perform portfolio analyses
- Develop ADR repository

Public Engagement

- Provided Congressional Briefing to LHSS
- Interfaced with patient advocate associations/community constituents
- Solicit input from the public and community constituents

Funding Opportunities

- FY23: Co-funded highly meritorious research applications
- FY23: support for ADR intramural trainees
- Collaborated to fund 5 FY23 EXACT-PLAN R21
- FY24 funding opportunities forthcoming

OADR-ORWH FY23 Co-Funding Summary

- OADR-ORWH funded **28** applications from **10** separate ICs
- OADR-ORWH also funded **6** EXACT-PLAN, **5** intramural fellowships (IOADR) and **2** AMP-AIM LSP awards
- Awards spanned basic to translational, clinical, public health research

Summary of the ADR types funded:

Autoimmune Thyroid Disease	Neurosarcoidosis
Endometriosis	Rheumatoid Arthritis
Fibromyalgia	Sjogren's Disease
Multiple Sclerosis	Systemic Lupus Erythematosus
Myositis	Type 1 Diabetes
Polychondritis	+ 6 additional ADs

Type	No. Of Applications Funded
Extramural	15 (8 ICs)
R56	3 (3 ICs)
Intramural	10 (6 ICs)
EXACT-PLAN	6 (1 IC)
IOADR Fellowships	5 (3 ICs)
AMP-AIM LSP	2 (1 IC)
Grand Total	41

Engagement with NIH Partners, Congress and Community Members

Coordinating Committee for Autoimmune Disease Research (CCADR)

- Inaugural meeting was held on 22 July 2023, 30 Attendees
- Next meeting scheduled for 23 Oct 2023
- 4 CCADR Working Groups established to support OADR-ORWH with NIH subject matter expertise (see graphic)

Congress and Community Members

- On 13 April 2023 Congressional Briefing on OADR-ORWH to Senate and House staff
- Invited to meetings with autoimmune disease community members on 29 March and 02 October 2023





EXposome in Autoimmune Disease Collaborating Teams PLANning Awards (EXACT-PLAN)

- Advance the study of the **exposome**
- **Exploratory, early, and conceptual** stage projects
- Development, and implementation of a team science **research network**
- Reflects NASEM Report's emphasis and addresses **congressional directives** to enhance coordination and collaboration regarding **autoimmune disease research**

R21 Clinical Trials Not Allowed
NOT-OD-23-112



NIAMS
NEI
NIA
NICHD

NIDCR
NIEHS
NCCIH
ORWH



EXposome in Autoimmune Disease Collaborating Teams PLANning Awards (EXACT-PLAN)

Funded Diseases Topics	Sites
Rheumatoid Arthritis & Systemic Lupus Erythematosus	University of Colorado Denver
Rheumatoid Arthritis & Systemic Lupus Erythematosus (SLE)	Benaroya research Institute at Virginia Mason
Immune-mediated inflammatory skin diseases, psoriasis, atopic dermatitis	University of California, San Francisco
Childhood-onset Rheumatic Diseases and other Pediatric Autoimmune Conditions	Boston Children's Hospital
Autoimmune diseases (AID) in children	University of Colorado Denver
Links between environmental exposures and autoimmune disease, specifically in systemic sclerosis and SLE	Medical University of South Carolina



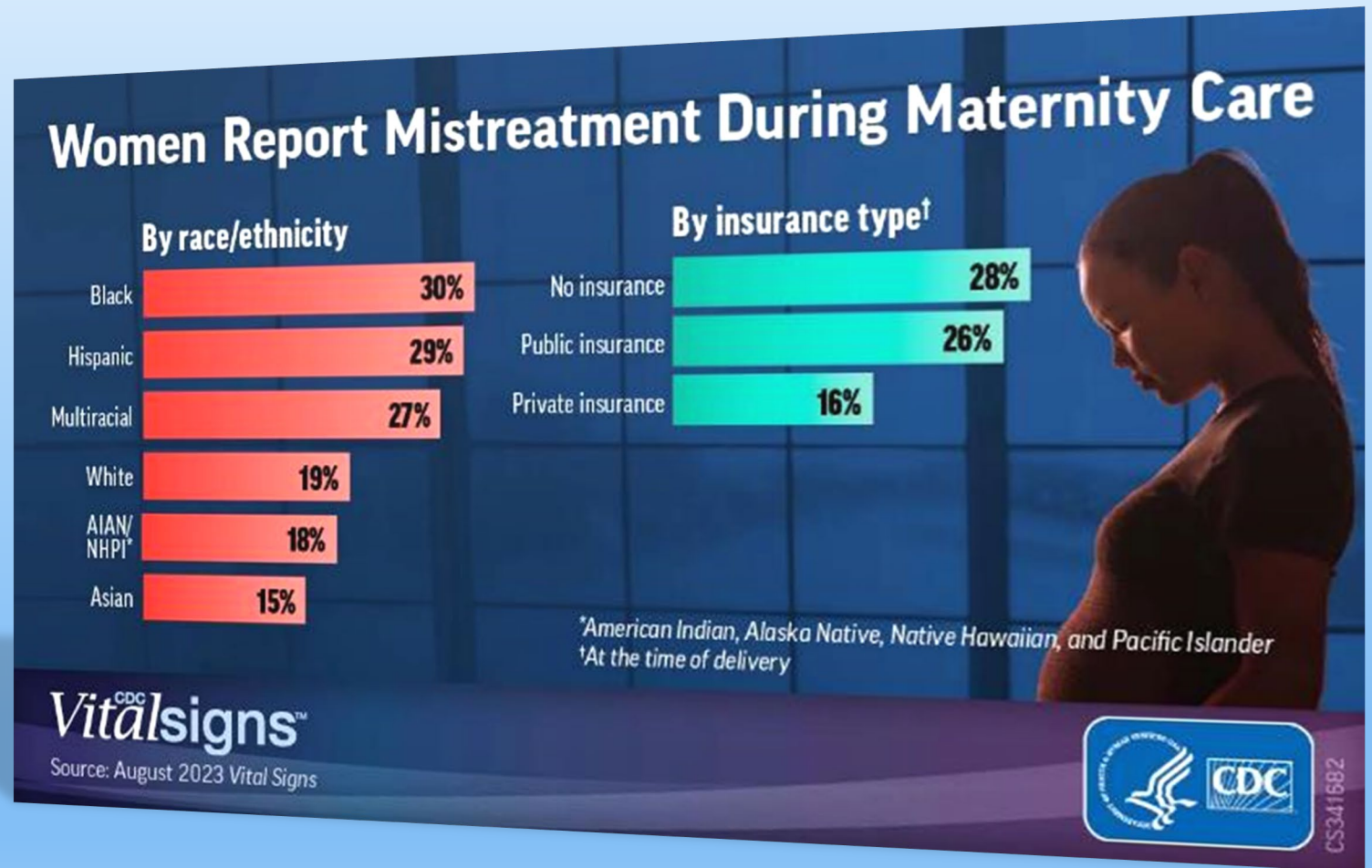
CDC: One in 5 Women Reported Mistreatment While Receiving Maternity Care

“Every mother deserves to be treated with dignity and respect. Maternal care is a core component of this nation’s health care, and the Biden-Harris Administration is committed to improving maternal health outcomes...”

“Bias, stigma, and mistreatment have no place in our healthcare systems.”

Xavier Becerra

U.S. Department of Health
and Human Services Secretary



ODP Pathways to Prevention Process – The Journey

Proposal Review, Approval, and Coordination | 9-12 months



Planning and Implementation | 12-15 months



Dissemination and Follow-up | 6-36 months



Sponsoring ICOs

ORWH
NHLBI
NICHD
NIMHD
ODP

***Responsible Parties:** Agency for Healthcare Research and Quality (AHRQ); Agency Leads; Evidence-based Practice Centers (EPC); Office of Disease Prevention (ODP).
Agency Leads: Representatives from an agency or organization outside of the ODP that serve as co-sponsors for a P2P workshop.

P2P: Identifying Risks & Interventions to Optimize Postpartum Health – Workshop report on website

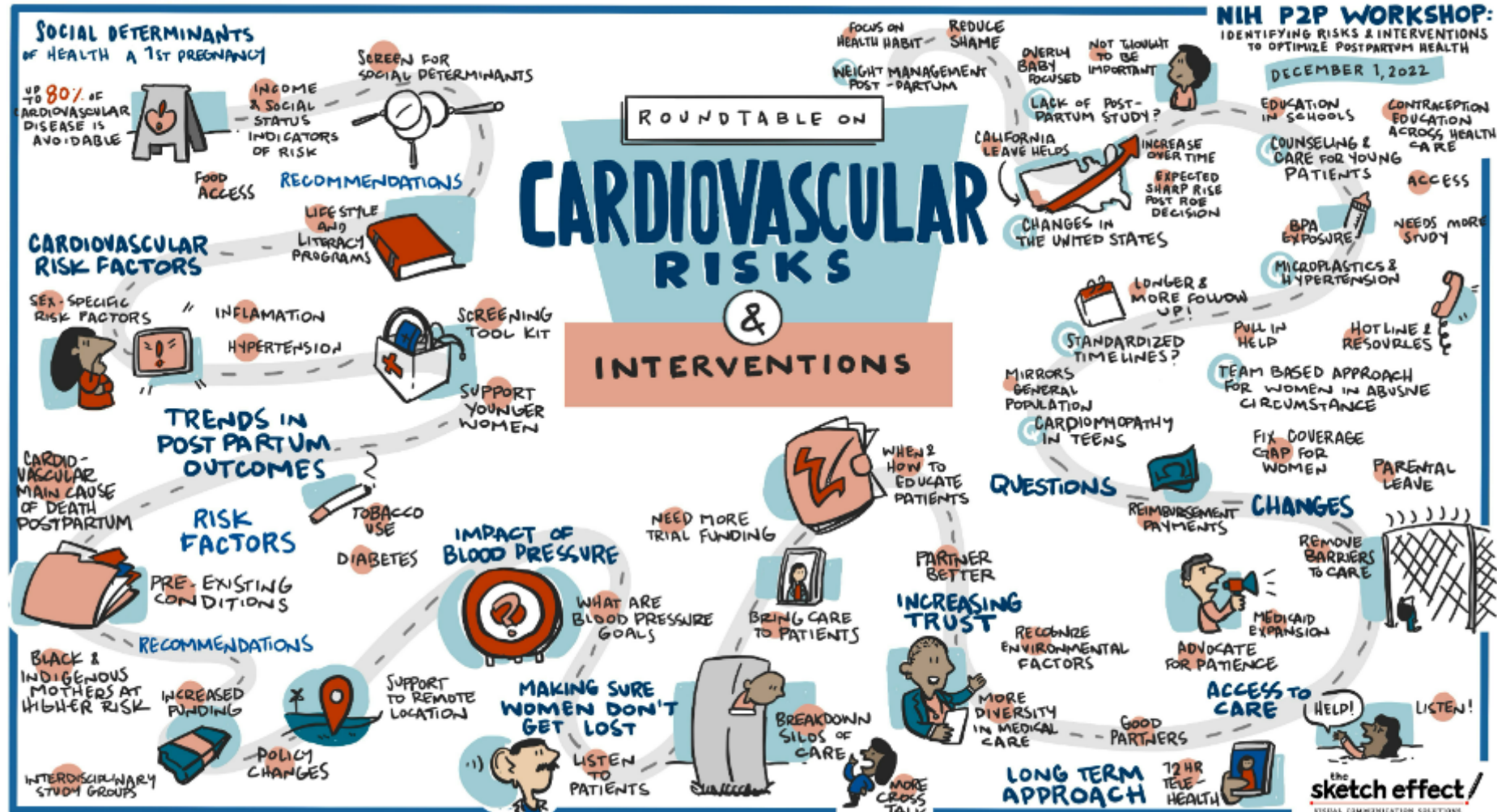


Photo credit: <https://prevention.nih.gov/research-priorities/research-needs-and-gaps/pathways-prevention/identifying-risks-and-interventions-optimize-postpartum-health/graphic-recording-roundtable-cardiovascular-risks-and-interventions>

Federal Partners Meeting Goal

The goal of the FPM is to assist the P2P sponsoring agencies with:

- Assessing current federal initiatives, resources, and potential partnerships relevant to the topic area.
- Identifying and prioritizing actionable items outlined in the Independent Panel Report to address research gaps (e.g., future meetings or funding opportunity announcements).
- Building on the workshop's momentum to develop a federal action plan that will guide next steps, advance the research field, and set the stage for future collaborations.
- Discussing opportunities for the findings in the workshop Independent Panel Report and Systematic Evidence Review Report to be applied to agencies' prevention programs and strategies.



IMPROVE (Implementing a Maternal health and Pregnancy Outcomes Vision for Everyone)



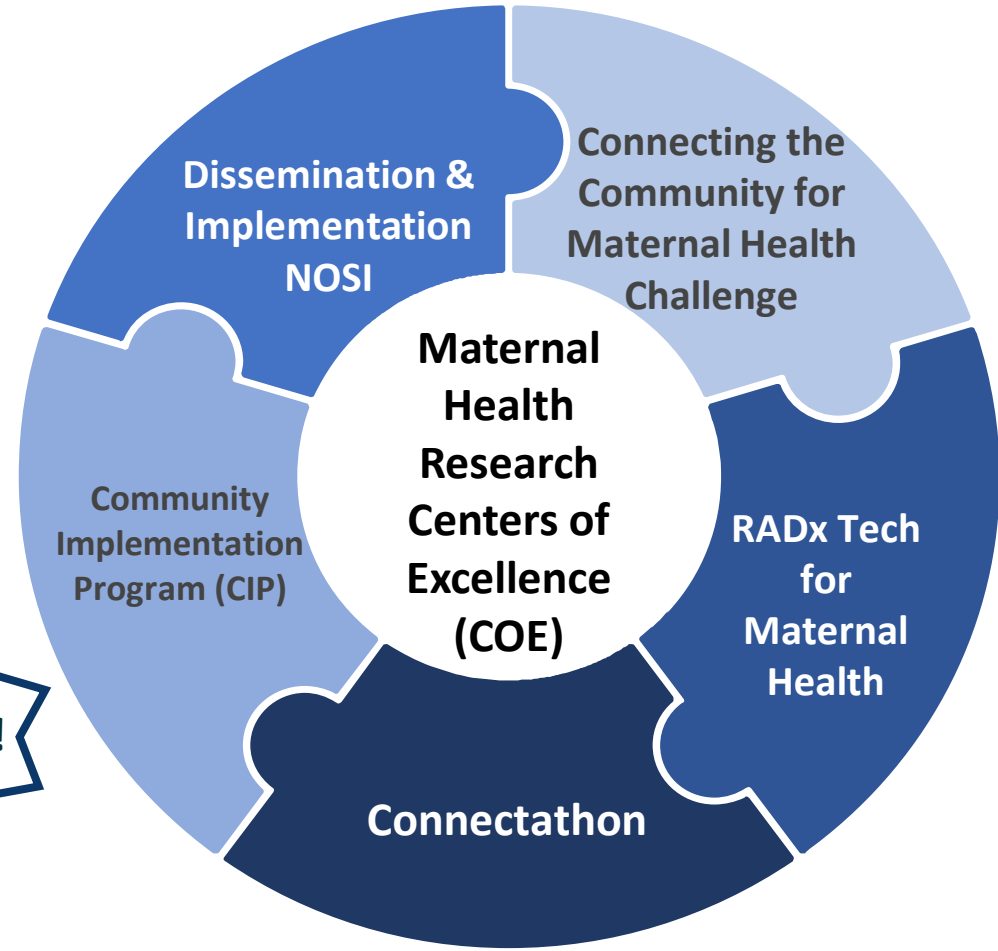
IMPROVE Centers of Excellence
launched on 8/30/23



IMPROVE Community
Implementation Program (CIP):
Kick-Off meeting held on 8/31/23



Addressing the Public Health Crisis
of Maternal Morality: A National
Research Agenda



OBSSR Announced Two IMPROVE Funding Opportunities



The Office of Behavioral and Social Sciences Research announced two NOFOs focused on intimate partner violence research—a leading cause of maternal mortality

Title	Link	Receipt Date
Career Enhancement Award to Advance the Study of Intimate Partner Violence (IPV) in the Context of Maternal Morbidity and Mortality Research (K18 Clinical Trial Not Allowed)	https://grants.nih.gov/grants/guide/rfa-files/RFA-OD-24-001.html	12/01/2023
R25 for Short Courses on Techniques for Measuring Intimate Partner Violence (IPV) in Different Populations (R25 Clinical Trial Not Allowed)	https://grants.nih.gov/grants/guide/rfa-files/RFA-OD-24-002.html	12/01/2023

NEW HHS Task Force on Maternal Mental Health

- **\$103 million** commitment from Biden-Harris administration
- Identify, evaluate, & make recommendations to coordinate & improve activities related to maternal mental health conditions & co-occurring substance use disorders
- Includes federal & non-federal members



Admiral Rachel L. Levine, M.D., Assistant Secretary for Health

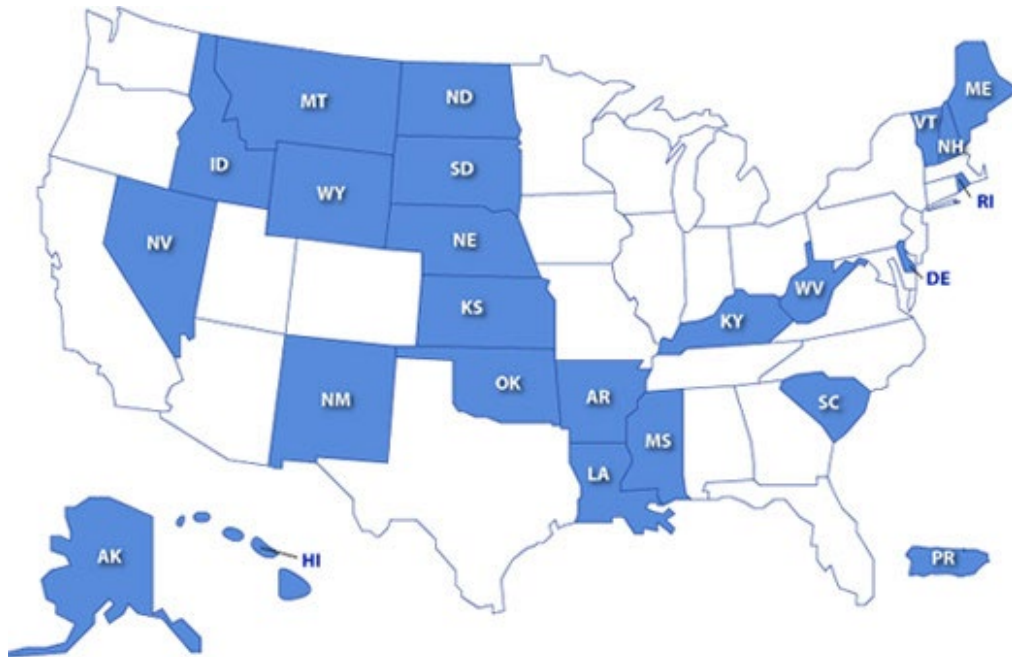


Miriam E. Delphin-Rittmon, Ph.D., Assistant Secretary for Mental Health & Substance Use

¹Photo credit: <https://www.hhs.gov/about/leadership/rachel-levine.html>

²Photo credit: <https://www.samhsa.gov/about-us/who-we-are/leadership/biographies/miriam-delphin-rittmon>

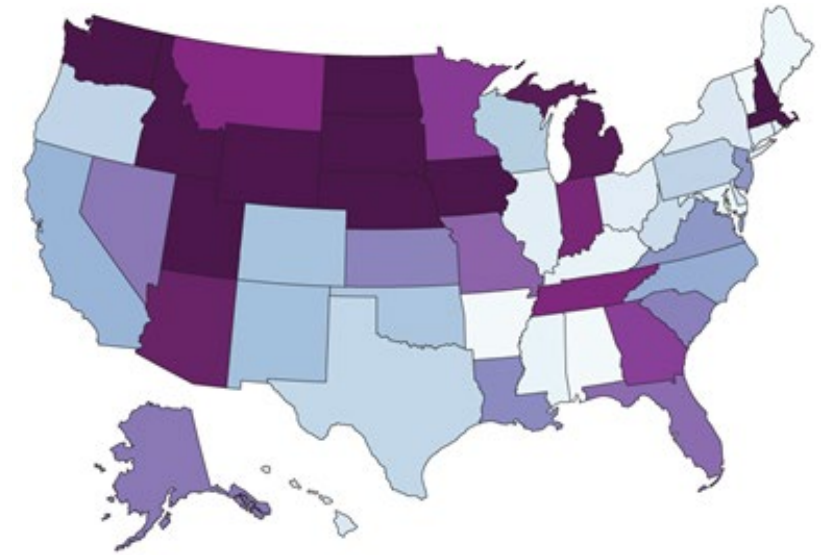
Institutional Development Award Program (IDeA) States: Women's Health and MMM Crisis



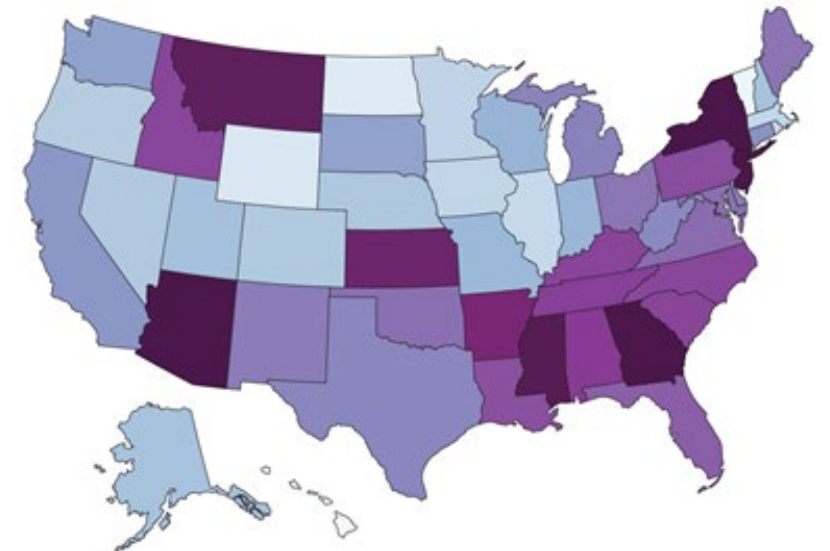
Now
LIVE!

<https://orwh.od.nih.gov/womens-health-research-in-institutional-development-award-idea-programs>

American Indian and Alaska Native MM



Black MM



NOSI: Administrative Supplements for Research on Women's Health in the IDeA States – 2023 Update

NOTICE	<u>NOT-GM-22-005</u>
DUE DATE	October 17, 2022; October 17, 2023; and October 17, 2024
GOAL	To expand research and research capacity in the IDeA states to address important issues of women's health across the lifespan. Research on maternal and infant morbidity and mortality is of particular interest.
ISSUED BY 16 ICOs	NIGMS with ORWH, NEI, NHLBI, NIA, NIAID, NIBIB, NICHD, NIDCR, NIDA, NIEHS, NINR, NCCIH, NCI, ODP, SGMRO
BUDGET	Up to \$200,000 for 1 year in direct costs.
CONTACTS	Crina Frincu (NIGMS) – Inquiries related to IDeA program and policy requirements Regine Douthard (ORWH) – inquiries related to scientific content of the applications POs from each ICO are listed to answer IC-specific questions
FUNDING	\$15.4 million awarded: 60 grants in 20 IDeA states & Puerto Rico since 2020



Current SCORE Programs Research Diverse Topics



Stress and neural regulation of reproductive aging health outcomes



Microvascular aging and eicosanoids – Women's evaluation of systemic aging tenacity



Influence of sex on microbial-host-pathogen interactions



Sex and age differences in immunity to influenza



Sex differences in major depression: Impact of prenatal stress-immune and autonomic dysregulation



Sex-specific effects of endocrine disruption on aging and Alzheimer's disease



Sex and gender impacts on addiction and stress-related disorders



Sex differences in the metabolic syndrome



Sex differences in cardiometabolic Health and Disease



Bioenergetic and cardiometabolic consequences of loss of gonadal function



Sex differences in alcohol use disorder



SABV in consideration of hypertension across health span through community outreach



Current SCORE Programs Research Diverse Topics

Journal of Women's Health > Vol. 32, No. 8 > ORWH Introduction

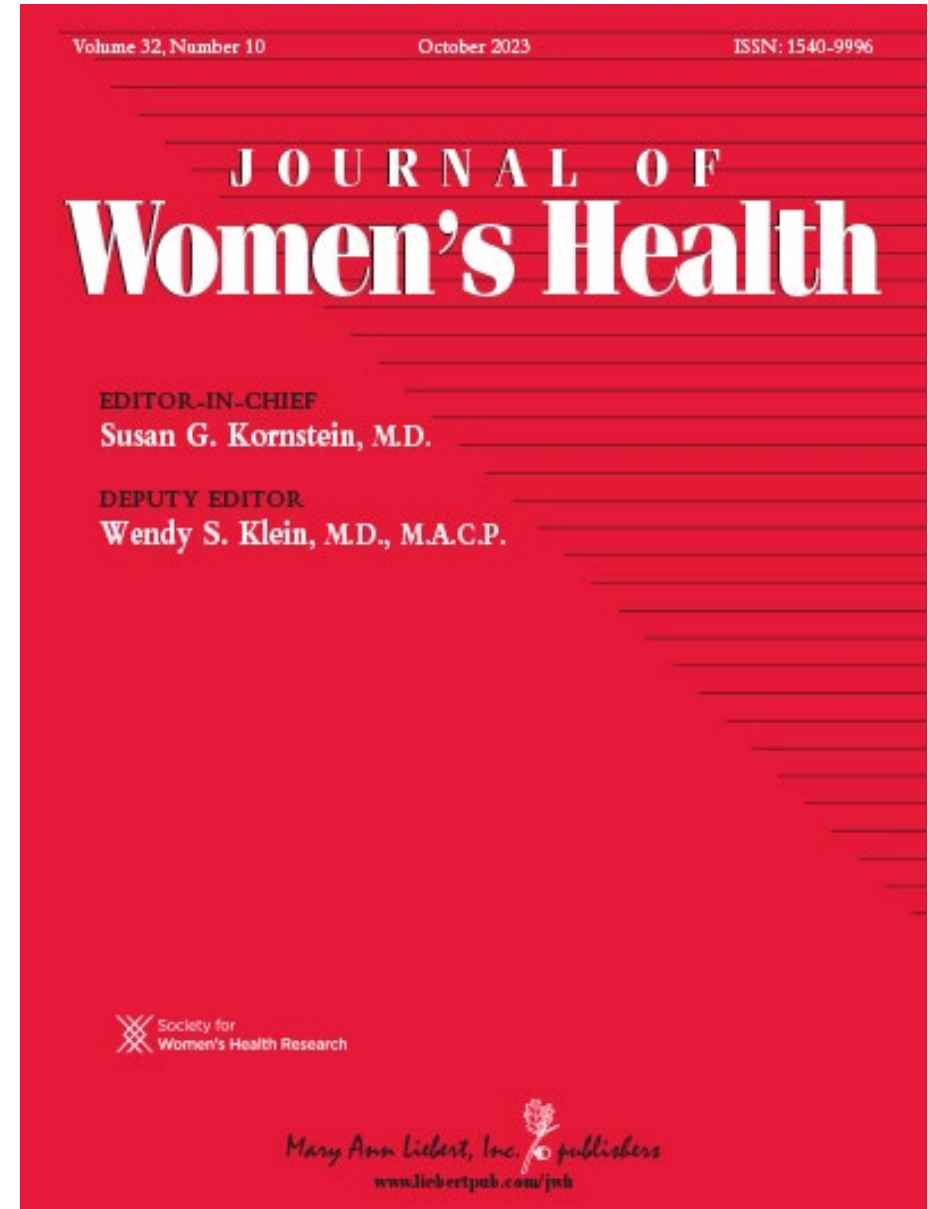
ORWH, NIH, SCORE Career Enhancement Core Programs Are Shaping the Future of Women's Health and Sex and Gender Research Training

Rajeev K. Agarwal ✉, Nikeya Macioce, Chyren Hunter, and Janine Clayton

Published Online: 16 Aug 2023 | <https://doi.org/10.1089/jwh.2023.0216>

Career Enhancement Core (CEC):

- Meets the career enhancement needs of translation science in the study of sex and gender differences.
- Supports early career faculties or established investigators
- Established pilot grant funding programs and complementary education programs





Current SCORE Programs Research Diverse Topics

Journal of Women's Health > Vol. 32, No. 8 > ORWH Introduction

ORWH, NIH, SCORE Career Enhancement Core Programs Are Shaping the Future of Women's Health and Sex and Gender Research Training

Rajeev K. Agarwal ✉, Nikeya Macioce, Chyren Hunter, and Janine Clayton

Published Online: 16 Aug 2023 | <https://doi.org/10.1089/jwh.2023.0216>

Career Enhancement Core (CEC):

- Meets the career enhancement needs of translation science in the study of sex and gender differences.
- Supports early career faculties or established investigators
- Established pilot grant funding programs and complementary education programs



Keynote Speaker:
Claire Pomeroy, M.D.
President

Albert and Mary Lasker Foundation

November 3, 2023

8:45 am – 9:30 am

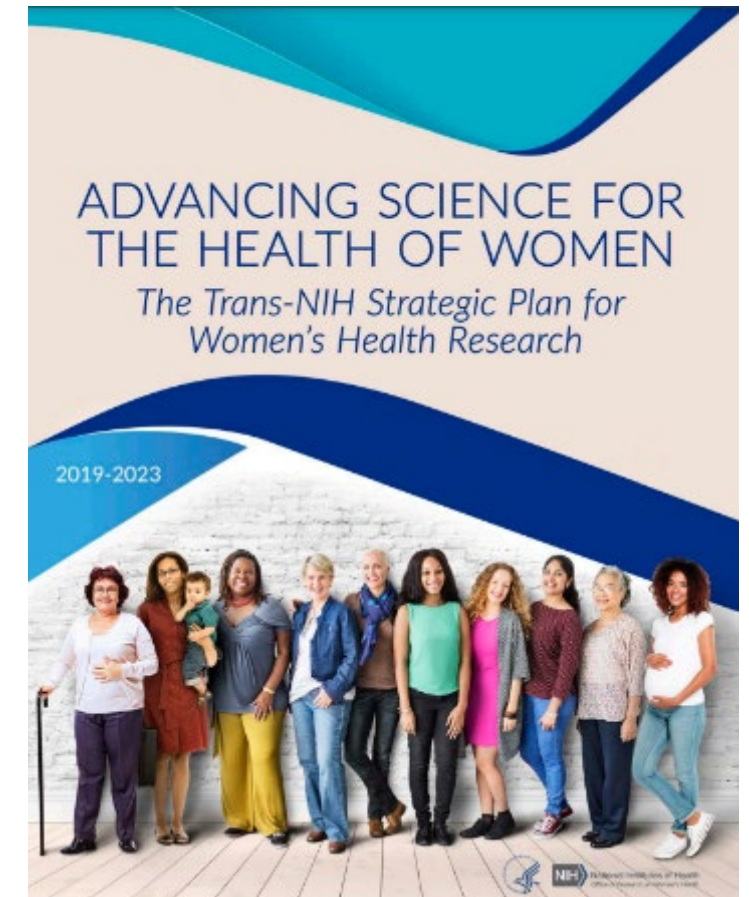
<https://videocast.nih.gov/watch=52539>

¹Photo Credit: https://www.msm.edu/about_us/BoardofTrustees/ClairePomeroy.php

SAVE THE DATE

Notice of Special Interest (NOSI): Research on Gender Measurement (Admin Supp Clinical Trial Optional)

NOT-OD-23-046



Notice of Special Interest (NOSI): Research on Gender Measurement (Admin Supp Clinical Trial Optional)

NOT-OD-23-046

- Trans-NIH Strategic Plan for Women's Health Research Objective 2.2:
Develop and adapt reliable and valid measures relevant to the health of women
- Administrative supplements supported by this Notice of Special Interest will support research testing gender terminology (e.g., woman, man, nonbinary) for measuring current gender identity as part of the two-step method of data collection (sex assigned at birth and current gender identity).
- Participating ICOs: NIA; NIAID; NICHD; NIDA; NIMHD; NLM; NCI; SGMRO
- <https://grants.nih.gov/grants/guide/notice-files/NOT-OD-23-046.html>

Strategic Goal 2

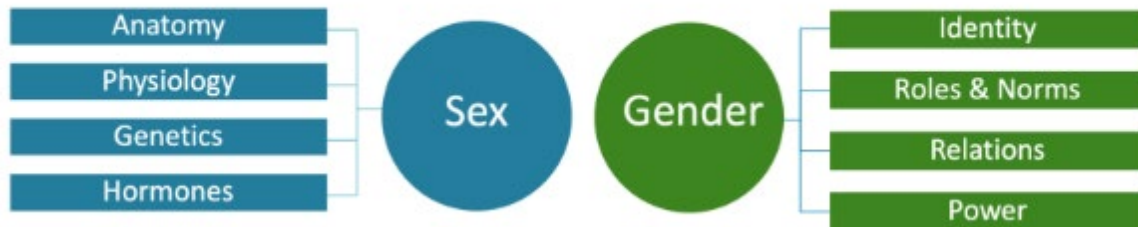
Methods

Develop methods and leverage data sources to consider sex and gender influences that enhance research for the health of women.



ORWH's New Way to Galvanize Health Equity through Education

Dimensions of Sex (Biological Variable) & Gender (Social and Cultural Variable)



Visit the relaunched
S&G webpage
38,000+ pageviews

GENDER R25 | Galvanizing Health Equity through Novel and Diverse Educational Resources



Purpose

Support **sex and/or gender-related** educational activities that complement and/or enhance **training of diverse workforce** to meet nation's health research needs

Participating ICOs | ORWH, NIA, NIAMS, NIDA, NIMHD, NLM, NIDCR, OBSSR, OAR, & SGMRO

Gender Measurement NOSI awards (8) complete: Round 1 funded; Round 2 review in October 2023

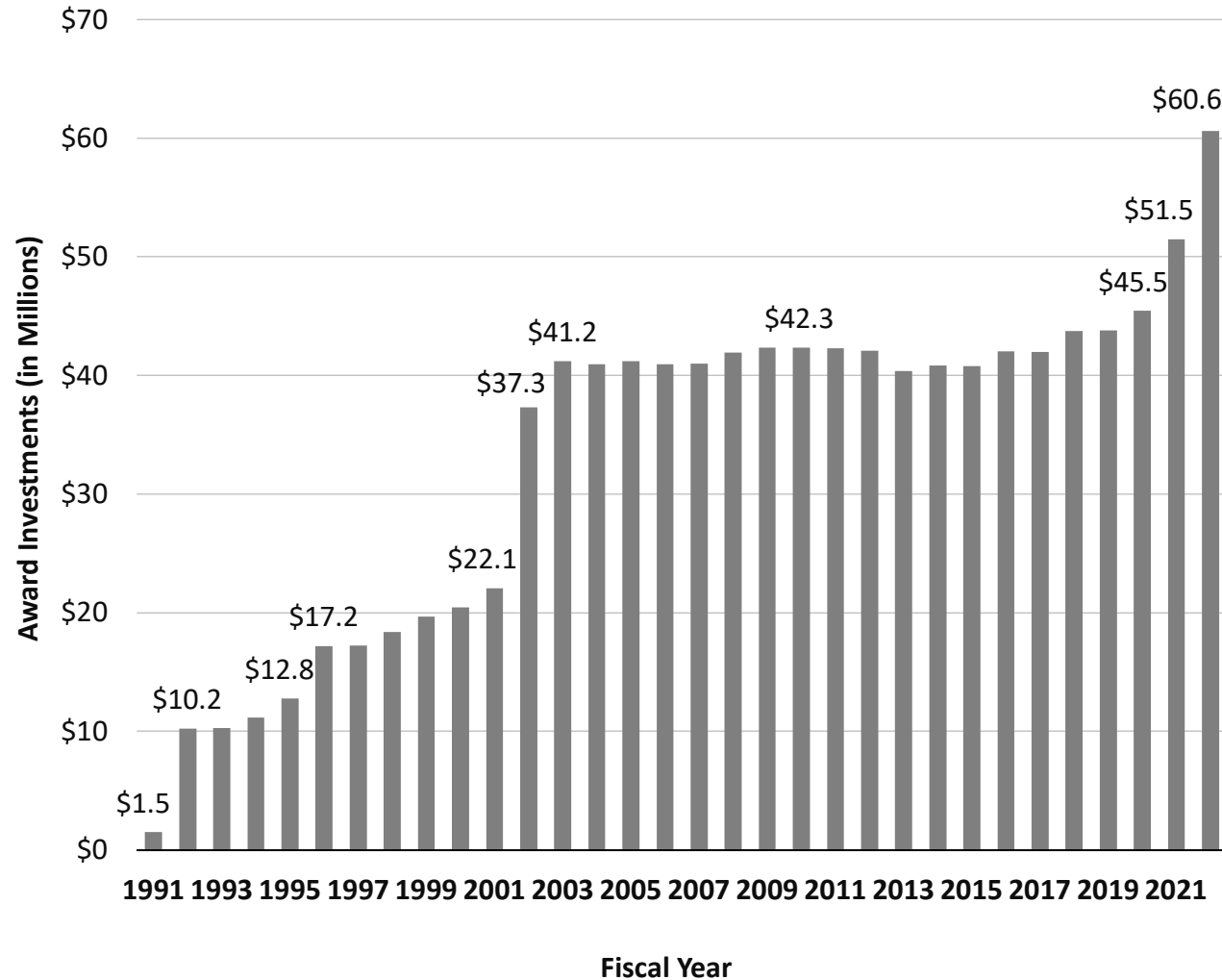
v.

Funding

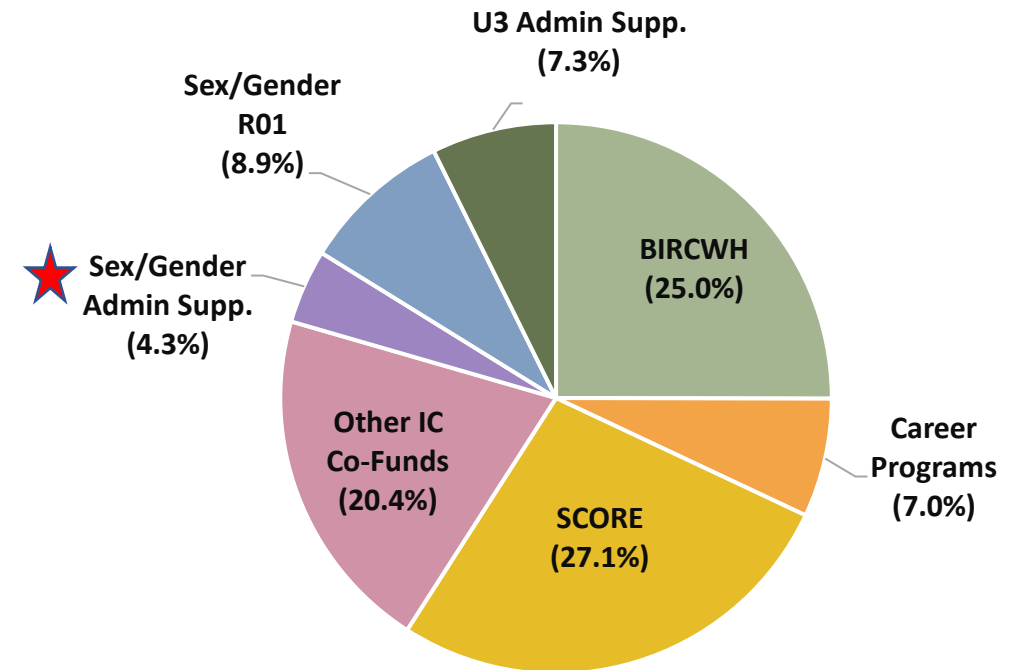


ORWH Budget History & FY2022 Extramural Grant Award Profile

ORWH Budget History



Note: Award investments do not adjust for inflation.



ORWH FY2022 Extramural Grant Awards by Program (as % of Extramural Budget)

Source: NIH IMPAC II FY2022 frozen data.

Note: ORWH total investments = \$43,222,779. Funding portfolio excludes R&D contracts, IAA, and Loan Repayment awards.



ORWH Budget History & FY2022 Extramural Grant Award Profile

FY23 Budget Appropriations

\$76,480,000 for ORWH

\$10,000,000 for OADR-ORWH

\$5,000,000 for BIRCWH

\$2,000,000 for NASEM study

Note: FY23 Appropriations are not separated by category

IV.

interest
business candid
network decisions
education franchise
strategy goals
research analysis
determination teamwork
career
innovation vision
planning support
success focus
synergy solution
growth ideas

Careers

NEW Research Supplements Promote Health-Related Research Careers

NIH Partnership Summit: Reimagining Women in the Bioengineering, Technology, and Data Science Ecosystem

THREE PROGRAMS



Re-Entry Supplements

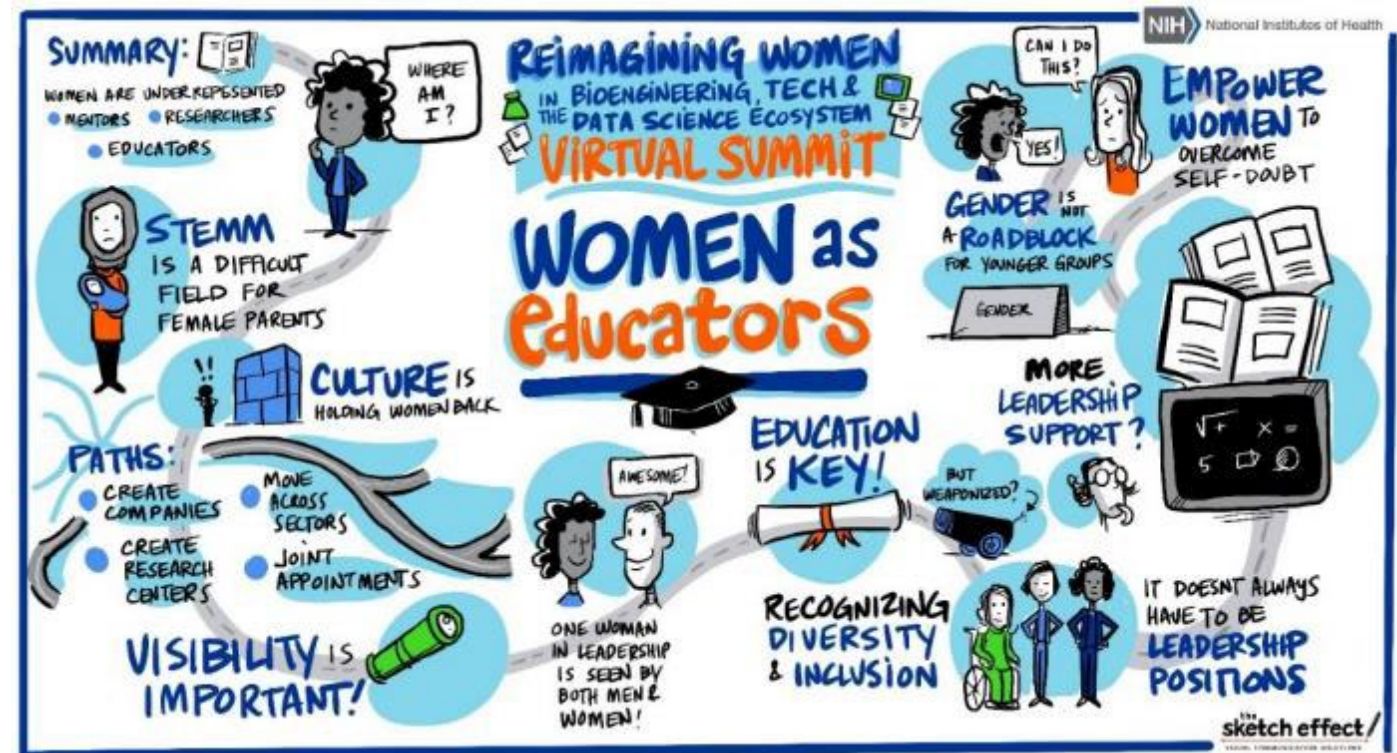


Reintegration



Retraining and Retooling

<https://orwh.od.nih.gov/career-development-education/research-supplements-promote-reentry-and-reintegration-health-related>



Executive Summary: https://orwh.od.nih.gov/sites/orwh/files/docs/Partnership_Summit_Executive_Summary_2022_508c.pdf

ORWH Sponsors NASEM Study: Policies & Practices for Supporting Family Caregivers Working in Science, Engineering & Medicine

NASEM will produce a report to leaders in academia and government with evidence-based guidance on how to:

- implement policies and programs **to support the retention, re-entry, and advancement** of students and professionals working in science, engineering, and medicine
- who have **family caregiving responsibilities, such as for children and older adults.**



For more information visit: <https://tinyurl.com/NASEMCaregiving>

» ORWH Signature Program: Building Interdisciplinary Research Careers in Women's Health (BIRCWH) Program

- Mentored career-development program designed to connect junior faculty, known as BIRCWH Scholars, to senior faculty with shared interest in women's health and sex differences research
- Since 2000, 88 grants to 44 institutions supporting more than 750 junior faculty
- ORWH and NIH ICs contribute over \$10 million per year

34% achieved tenure

54% achieved leadership positions:

- Dean
- Associate Provost
- Director
- Professor, Associate Professor

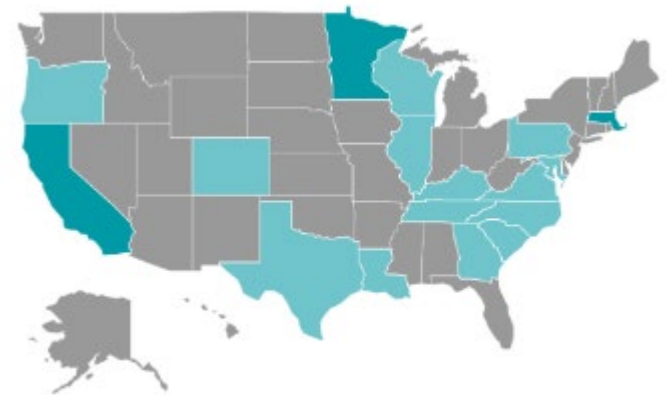
23% achieved both tenure and a leadership position



Building Interdisciplinary
Research Careers in
Women's Health

**4th scholar
&
5th trainee
added!**

FY 2023 Active BIRCWH Programs



<https://orwh.od.nih.gov/our-work/building-interdisciplinary-research-careers-in-womens-health-bircwh>

¹Photo Credit: <https://www.tuftsmedicalcenter.org/physiciandirectory/karen-freund>

²Photo Credit: <https://www.niams.nih.gov/about/directory/lindsey-criswell-md-mph-dsc>



NIH National Institutes of Health
Office of Research on Women's Health

ORWH Signature Program: Building Interdisciplinary Research Careers in Women's Health (BIRCWH) Program



1

Ruth L. Kirschstein Memorial Lecture
Karen M. Freund, M.D., M.P.H.
Physician-in-Chief
Department of Medicine
Tufts Medical Center

SAVE THE DATE!
December 5, 2023



2

Legacy Of Leadership Lecture
Lindsey A. Criswell, M.D., M.P.H., D.Sc.
Director
National Institute of Arthritis and
Musculoskeletal and Skin Diseases (NIAMS)

<https://orwh.od.nih.gov/our-work/building-interdisciplinary-research-careers-in-womens-health-bircwh>

¹Photo Credit: <https://www.tuftsmedicalcenter.org/physiciandirectory/karen-freund>

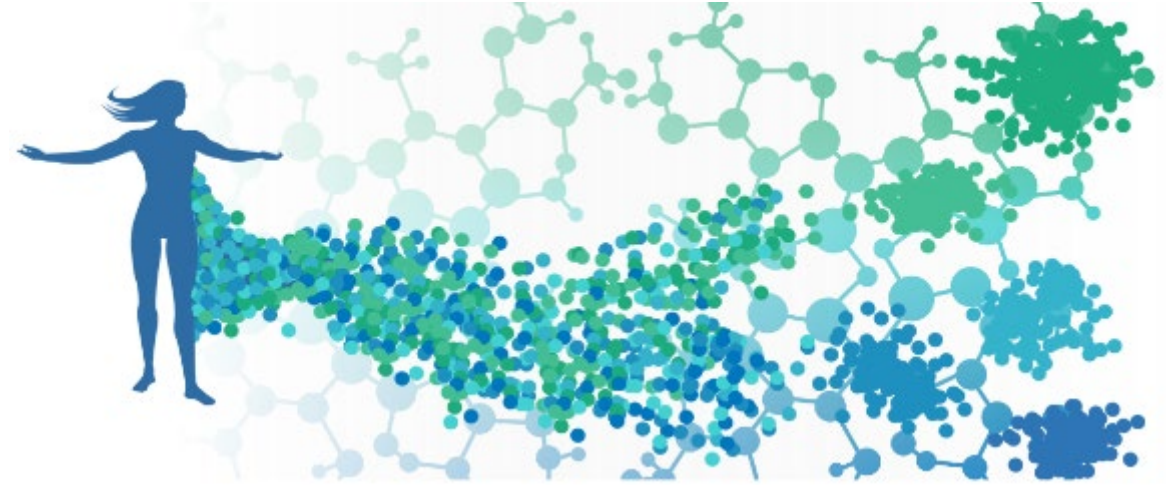
²Photo Credit: <https://www.niams.nih.gov/about/directory/lindsey-criswell-md-mph-dsc>



Team Science Leadership Scholar Program (LSP) in Women's Health, Autoimmune and Immune-Mediated Diseases

A pilot program to support and train women's health scholars by helping them acquire and hone team science leadership and mentoring skills

An immersive, cross-sectoral, collaborative experience that will enable women's health scholars to become large consortium team leaders



Announcing the Inaugural Cohort of Leadership Scholars Program Awardees | blog co-authored by NIAMS, ORWH & ODSS





Team Science Leadership Scholar Program (LSP) in Women's Health, Autoimmune and Immune-Mediated Diseases

A pilot program to support and train women's health scholars by helping them acquire and hone team science leadership and mentoring skills

An immersive, cross-sectoral, collaborative experience that will enable women's health scholars to become large consortium team leaders

2023 LSP Awardees:

Sheila Angeles-Han, M.D., M.S.

Monica Guma, M.D., Ph.D.

Sara McCoy, M.D., Ph.D.

Paula Sofia Ramos, M.D., M.Sc.

Kelly Ruggles, Ph.D., M.S.



April Lynn Barnado, M.D., MSCI
Former BIRCWH Scholar

Women's Health Research Events 2023-2024

**The Long-Term Effects of
Pregnancy on Aging
Workshop** | November 1, 2023
8:00 am – 6:30 pm

**Building Interdisciplinary
Research Careers in Women's
Health (BIRCWH) 2023 Annual
Meeting** | December 5, 2023
8:00 am – 5:00 pm

**Specialized Centers of
Research Excellence on Sex
Differences (SCORE) 2023
Annual Meeting Keynote
Address** | November 3, 2023
8:45 am – 9:30 am

**Diverse Voices: Graphic
Medicine** | January 25, 2024
3:00 pm – 4:00 pm

**HIV & Women Scientific
Workshop** | March 21, 2024
10:00 am – 5:00 pm



National Institutes of Health
Office of Research on Women's Health

bit.ly/ORWHevents

Case sensitive

V.

CONNECT WITH ORWH

The Pulse

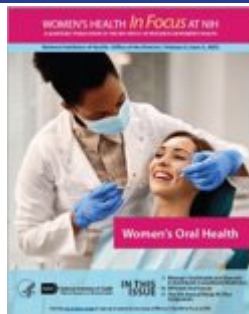
Monthly Email

bit.ly/ORWHpulse *



bit.ly/ORWHevents

WOMEN'S HEALTH *In Focus* AT NIH
A QUARTERLY PUBLICATION OF THE NIH OFFICE OF RESEARCH ON WOMEN'S HEALTH



bit.ly/ORWHInFocus

X @JanineClaytonMD

X @NIH_ORWH

f NIHORWH

NIH.gov/women

E-LEARNING



- Bench to Bedside: Integrating Sex & Gender to Improve Human Health
- SABV Primer
- And more!

bit.ly/ORWHeLearning

www.nih.gov/women

**All Bitly addresses are case-sensitive*



National Institutes of Health
Office of Research on Women's Health



Jon R. Lorsch, Ph.D.

Director

National Institute of General Medical Sciences

Co-Chair:

- NIH Scientific Data Council
- NIH UNITE-E Committee

Member:

- Administrative Data Council

Training:

- Postdoctoral Research, Stanford University
- Ph.D., Harvard University
- B.A., Swarthmore College